

## 좌측 대동맥동에서 기시한 단일 관상동맥 1예

박형욱 · 안영근 · 정명호 · 강정채

## A Case of Single Coronary Artery Originating from Left Aortic Sinus

Hyung Wook Park, MD, Young Keun Ahn, MD, Myung Ho Jeong, MD and Jung Chae Kang, MD

Division of Cardiology, Department of Internal Medicine, Chonnam University Hospital, Kwangju, Korea

## ABSTRACT

An isolated single coronary artery from the left aortic sinus is one of rare congenital coronary anomalies. This anomaly was detected during elective coronary angiogram in a 44 year-old male patient with atypical chest pain. Treadmill exercise test demonstrated 1 mm horizontal depression at stage 3 and the test was terminated at the V stage due to chest pain. No myocardial ischemia was demonstrated on myocardial SPECT using  $^{99m}\text{Tc}$ -tetrofosmin. Coronary angiogram revealed single coronary artery originating from left aortic sinus without any stenotic lesions. (Korean Circulation J 1998;28(6):1017-1020)

**KEY WORDS :** Congenital coronary artery anomaly · Single coronary artery.

## 서 론

1

1 2% ,  
0.64 1.2%  
1)2)

## 증 례

44 3

가

1

가

3

: 1998 3 31

: 1998 6 25

: , 501 - 757 1 8

: (062) 220 - 6243 · : (062) 228 - 7174

E - mail : myungho@chollian.net

150/100 mmHg, 78/ ,  
18/ , 36.1 , 70.8 kg, 161.5 cm .

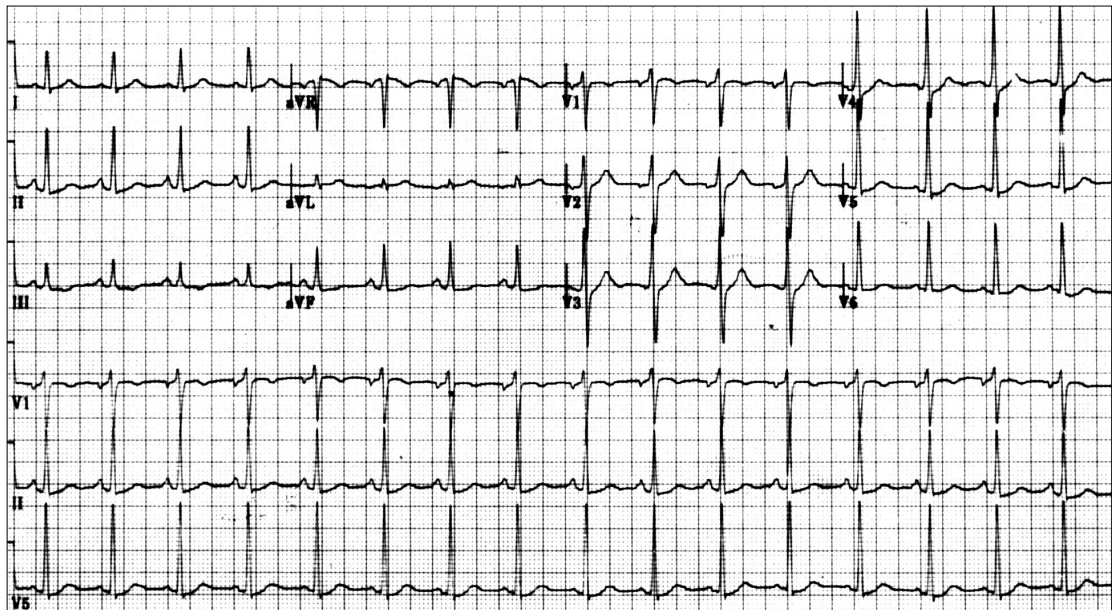


Fig. 1. ECG on admission demonstrated normal sinus tachycardia associated with ST segment change and atrial hypertrophy.

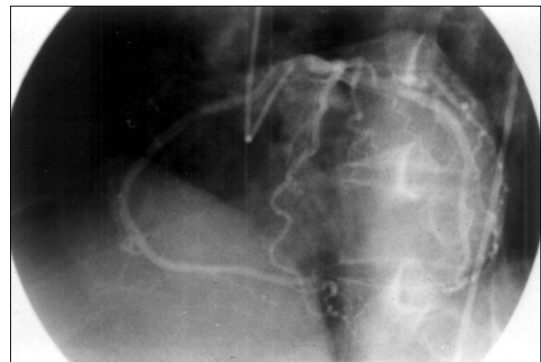


Fig. 2. Left coronary angiogram, which was taken on left anterior oblique projection, revealed all of three coronary arteries originated as a single stem from the left aortic sinus.

ST  
(Fig. 1),  
가 225 mg  
/dl, 가 160 mg/dl 가  
가  
modified Bruce protocol  
13 METs  
107% . 4 가 ,  
, aVF, V<sub>6</sub> ST 1 mm  
, 5  
+5 .  
<sup>99m</sup>Tc - tetrofosmin  
3 가  
(Fig. 2).

고 안

Valsalva

가

가

가

가

중심 단어 :

REFERENCES

- 1) Liberthson RR, Dinsmore RE, Bharati S, Rubenstein JJ, Caulfield J, Wheeler EO, et al. *Aberrant coronary artery origin from the aorta. Diagnosis and clinical significance. Circulation* 1974;50:774-9.
- 2) Kimbiris D, Iskandrian AS, Segal BL, Bemis CE. *Anomalous aortic origin of coronary arteries. Circulation* 1978;58:606-15.
- 3) Fernandes ED, Kadivar H, Hallman GL, Reul GJ, Ott DA, Cooley DA. *Congenital malformations of the coronary arteries: The Texas Heart Institute experience. Ann Thorac Surg* 1992;54:732-40.
- 4) Roberts WC. *Major anomalies of coronary arterial origin seen in adulthood. Am Heart J* 1986;111:941-63.
- 5) Sharbaugh AH, White RS. *Single coronary artery: Analysis of the anatomic variation, clinical importance, and report of five cases. JAMA* 1974;230:243-6.
- 6) Lipton MJ, Barry WH, Obrez I, Silverman JF, Wexler L. *Isolated single coronary artery: Diagnosis, angiographic classification, and clinical significance. Radiology* 1979;130:39-47.
- 7) Choi YH, Park JH, Kim YM, Kim YK, Kim MA, Park YB. *Congenital anomalies of the coronary arteries detected in adulthood. Korean Circulation J* 1997;27:287-95.
- 8) Murphy ML. *Single coronary artery. Am Heart J* 1967;74:557-61.
- 9) Hsieh YK, Fu M, Wu CJ, Chua SO, Yeh KH. *Anomalous origin of left coronary artery from right coronary artery (single coronary artery): Diagnosis by transesophageal echocardiography. J Ultrasound Med* 1996;15:169-71.
- 10) Jeong MH, Park SJ, Kim SG, Cho JG, Park JC, Kang JC, et al. *A case of myocardial bridge in the left circumflex artery. Korean Circulation J* 1987;17:571-75.
- 11) Kim MS, Ahn YK, Bae Y, Park JH, Jeong MH, Cho JG, et al. *Clinical characteristics of coronary arteriovenous fistula in Korean adults. Korean Circulation J* 1997;27:900-6.
- 12) Chun SS, Yang CM, Chung WS, Paik SH, Chai JS, Kim JH, et al. *Visualization of coronary arteries by color-coded transesophageal Doppler echocardiography. Korean Circulation J* 1991;21:47-52.
- 13) Yamanaka O, Hobbs RE. *Coronary artery anomalies in 126,595 patients undergoing coronary arteriography. Cathet Cardiovasc Diagn* 1990;21:28-40.
- 14) Taylor AJ, Rogan KM, Virmani R. *Sudden cardiac death associated with isolated congenital coronary artery anomalies. J Am Coll Cardiol* 1992;20:640-7.

- 15) Kragel AH, Roberts WC. *Anomalous origin of either the right or left main coronary artery from the aorta with subsequent coursing between aorta and pulmonary trunk: Analysis of 32 necropsy cases. Am J Cardiol 1988;62: 771-7.*
- 16) Cheitlin MD, De Castro CM, McAllister HA. *Sudden death as a complication of anomalous left coronary origin from the anterior sinus of Valsalva. Circulation 1974; 50:780-7.*
- 17) Cheitlin MD, McAllister HA, De Castro CM. *Myocardial infarction without atherosclerosis. JAMA 1975;231:951-9.*
- 18) Friedman S, Ash R, Klein D, Johnson J. *Anomalous single coronary artery complicating ventriculotomy in a child with cyanotic congenital heart disease. Am Heart J 1960;59: 140-7.*
- 19) Stauffer JC, Sigwart U, Vogt P, Aymon D, Kappenberger L. *Transluminal angioplasty of a single coronary artery. Am Heart J 1991;122:569-71.*
- 20) Baljepally RM, Pollock SH, Magram MY. *Transluminal angioplasty of a single coronary artery anomaly during acute myocardial infarction. Angiology 1993;44:981-4.*
- 21) Grenadier E, Beyar R, Amikam S, Markiewicz W. *Two-vessel PTCA of single anomalous coronary artery. Am Heart J 1992;123:220-2.*