

선천성 이중승모판구(Congenital Double-Orifice Mitral Valve) 1예

이동일 · 정보영 · 김영우 · 임세중 · 하종원 · 정남식

A Case of Isolated Congenital Double-Orifice Mitral Valve

Dong-il Lee, MD, Boyoung Chung, MD, Youngwoo Kim, MD,
Se-Joong Rim, MD, Jong-Won Ha, MD and Namsik Chung, MD

Cardiology Division, Yonsei Cardiovascular Center, College of Medicine, Yonsei University, Seoul, Korea

ABSTRACT

Double-orifice mitral valve is a relatively rare congenital abnormality, usually discovered at autopsy or surgery. In most cases, the double-orifice mitral valve causes no hemodynamic effects, sometimes it is regurgitant, and rarely is stenotic. Appreciation of this echocardiographic abnormality is important because double orifice mitral valve is often associated with other congenital anomalies and this echocardiographic findings may be confused with other cardiac abnormalities. The authors report a case of isolated congenital double-orifice mitral valve in a 42-year-old woman. Data from the literature are reviewed and the echocardiographic images of the malformation are described. (**Korean Circulation J 1998;28(6):1007-1010**)

KEY WORDS : Double orifice mitral valve · Echocardiography.

서 론

(Double - Orifice Mitral Valve, DOMV) , DOMV (autopsy)

1 - 4)

가

가 가 .⁵⁻⁷⁾ DOMV 가 증 례

:1998 3 18

:1998 6 25

: , 120 - 752

134

42

1 6

: (02) 361 - 7071 · : (02) 393 - 2041

E - mail : namsikc@yumc.yonsei.ac.kr

2

가

120/80 mmHg ,
65
ST - T
(paras -
ternal short axis view) 2
(mitral orifice) (lea -

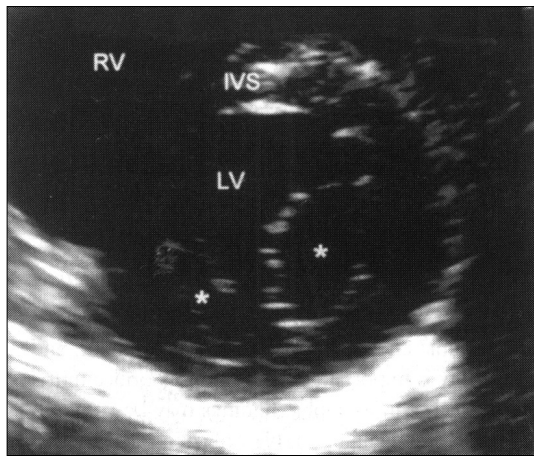


Fig. 1. Parasternal short-axis view at the level of the mitral valve demonstrates two separate mitral valve orifices (*). The lateral orifice was located anteriorly in respect to the medial which was placed posteriorly.

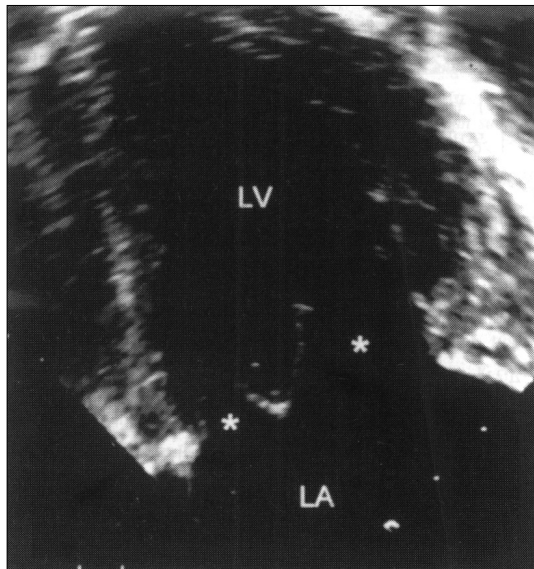


Fig. 2. Transesophageal echocardiography shows the two mitral orifices (*) as well as central separating ridge at the middle portion of the mitral annulus.

flet) (thickness) (Fig. 1).
(papillary muscle)
(pulsed wave Doppler echocardiography)
2
(chordae tendinae)
2 (longitudinal two chamber view)
2 (leaflet) parachute mi -
tral valve double
parachute valve (Fig. 2).

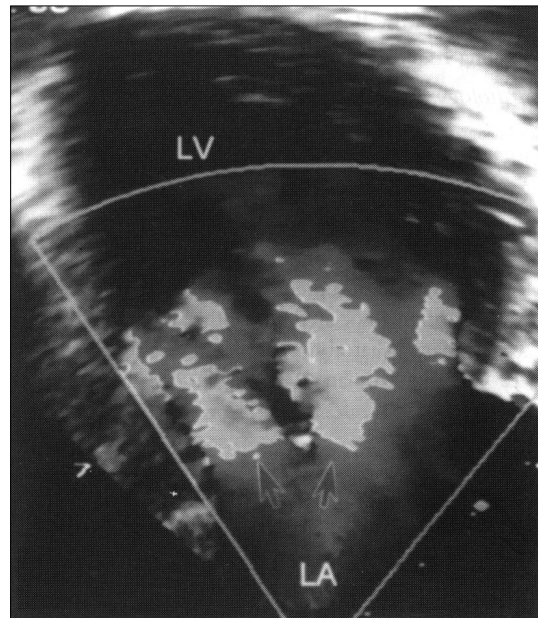


Fig. 3. Longitudinal two-chamber view shows the left ventricular (LV) filling through two separate jets (arrows).

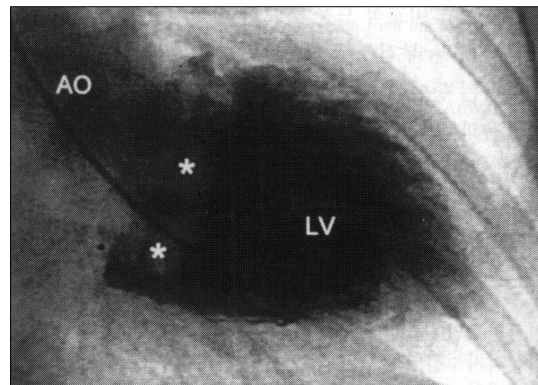


Fig. 4. Left ventricular angiogram shows the two separate jets (*) during diastole.

(color Doppler echocardiography)

(mitral inflow)

(Fig. 3).

3

2

(Fig. 4).

고 안

DOMV Greenfield 1876

8)

가

9)10)

(atrioven-

tricular canal defect) 가

(bicuspid aortic valve),

(coarctation of

aorta)

5) Wa-

kai 11)

10% DOMV

(patent ductus arteriosus), (right - sided aortic arch),

(subaortic stenosis),

(bicuspid pulmonary valve),

(trans-

position of the great arteries), Ebstein

(secundum ASD)

(VSD)

12-14)

15) Rosenberg

16)

2

가

가

. DOMV

3가

(type)

5)

complete bridge

type

(valve ring)

leaflet tip

2

가

(funnel shaped)

가

(short axis scanning)

MV

leaflet tip

2

.

DOMV

incomplete bridge type

(anterior leaflet)

(posterior leaflet)

(connection) leaflet tip

(short axis view)

leaflet tip

2

(base)

hole type

leaflet

가

(lateral commissure)

midleaflet level

가

가

2

DOMV

(parasternal short axis view)가 가

5)

le -

aflet tip

2

complete bridge type

. DOMV

가

2)17)18)

2

가

DOMV

(cleft mitral valve)

(anterior leaflet)

19)20)

(defect)

2

가

DOMV

2

가

DOMV

V (V - shaped)

가

DOMV

가

가

가

DO -

가

DOMV

(surgical repair)

DOMV

가

18)

요 약

DOMV

중심 단어 :

REFERENCES

- 1) Bor N, Peters R. Double mitral apparatus or orifice: Report of a case. *Arch Pathol* 1957;64:92-9.
- 2) Uurdakul Y, Bilgic A, Saylam A, Sarioglu T, Kosker S, Aytac A. Congenital double-orifice mitral valve. Report of a case with valve replacement. *Jpn Heart J* 1980;21:545-50.
- 3) Ancalmo N, Ochsner JL, Mills NL, King TD. Double mitral valve. Report of a case and review of the literature. *Angiology* 1977;28:95-100.
- 4) Schraft WC, Lisa JR. Duplication of the mitral valve: Case report and review of the literature. *Am Heart J* 1950;39:136-40.
- 5) Trowitzsch E, Bano-Rodrigo A, Burger BM, Colan D, Sanders SP. Two dimensional Echocardiographic findings in double orifice mitral valve. *J Am Coll Cardiol* 1985;6:383-7.
- 6) Ibawi MN, Idriss FS, DeLeon SY, Riggs TW, Muster AJ, Berry TE, Paul MH. Unusual mitral valve abnormalities complicating surgical repair of endocardial cushion defects. *J Thorac Cardiovasc Surg* 1983;85:697-704.
- 7) Kron J, Standerfer RJ, Starr A. Severe mitral regurgitation in a woman with double orifice mitral valve. *Br Heart J* 1986;55:109-11.
- 8) Greenfield WS. Double mitral valve. *Trans Patho Soc London* 1876;27:128-9.
- 9) Kenaan G, Neufeld HN, Deutsch V, Shem-Tor A. Isolated congenital double-orifice mitral valve. *Isr J Med Sci* 1974;10:419-23.
- 10) Rowe DW, Desai B, Bezmalinovic Z, Desai JM, Wessel RJ, Grayson LH. Two-dimensional echocardiography in double orifice mitral valve. *J Am Coll Cardiol* 1984;4:429-33.
- 11) Wakai CS, Edwards JE. Pathologic study of persistent common atrioventricular canal. *Am Heart J* 1958;56:779-94.
- 12) Mercer JL, Tubbs OS. Successful surgical management of double mitral valve with sub-aortic stenosis. *J Thorac Cardiovasc Surg* 1974;67:440-2.
- 13) Lee ML, Wang JK, Wu MH, Chang CI, Lue HC. Double-orifice mitral valve: Report of two cases. *J Formos Med Asso* 1994;93:971-3.
- 14) Chikasue F, Kojima T, Yashiki M, Miyazaki T, Satow Y. A case of Ebstein's anomaly with double mitral valve. *Forensic Sci Int* 1988;37:167-75.
- 15) Daly JJ, Richards DF. Bacterial endocarditis occurring on a double mitral valve. *Br Heart J* 1965;27:625-6.
- 16) Rosenberg J, Roberts WC. Double orifice mitral valve: Study of the anomaly in two calves and a summary of the literature in humans. *Arch Pathol* 1968;86:77-80.
- 17) Reed GE, Cortes LE, Clauss RH, Reppert EH. The surgical repair of duplication of the mitral valve. *Ann Thorac Surg* 1970;9:81-5.
- 18) Warnes C, Somerville J. Double mitral valve orifice in atrioventricular defects. *Br Heart J* 1983;49:59-64.
- 19) Hagler DJ, Tajik AJ, Seward JB, Mair DD, Ritter DG. Real time wide angle sector echocardiography: Atrioventricular canal defects. *Circulation* 1979;59:140-50.
- 20) Rowe DW, Pechacek LW, DeCastro CM, Garcia E, Hall RJ. Initial diastolic indentation of the mitral valve in aortic insufficiency. *JCU* 1982;10:53-7.