

# 심근경색을 동반한 관상동맥 자발박리 1예

우상민 · 김동호 · 김홍성 · 김광일 · 이석주 · 정경태 · 박순창

성 인 환

= Abstract =

## Acute Myocardial Infarction in Patient with Spontaneous Coronary Artery Dissection : A Case Report

Sang Min Woo, M.D., Hong Sung Kim, M.D., Gwang Il, M.D.,  
Dong Ho Kim, M.D., Suk Ju Lee, M.D.,  
Kyung Tae Jung, M.D., Sun Chang Park, M.D.

*Department of Internal Medicine, Eul Ji General Hospital, Daejeon, Korea*

In Hwan Sung, M.D.

*Department of Internal Medicine, University of Chung Nam, School of Medicine, Daejeon, Korea*

Spontaneous coronary artery dissection is a rare incident occurring usually in young patients, predominantly in females. It is usually fatal and found postmortem. It is also a rare cause of acute myocardial infarction. We present the case of a twenty nine-year-old-man with spontaneous right coronary artery dissection found angiographically which caused an inferior wall myocardial infarction. He was treated with medical therapy only and after uneventful hospital course, he was discharged with medication. Three months later, coronary angiography was done to follow up the lesion and found that the site was completely healed.

**KEY WORDS :** Spontaneous coronary artery dissection · Myocardial infarction.

서 론

1931 Pretty

1).

2).

1

Marfan

## 증례

: , 29 .  
: (91 5 9 ).  
: 5 8

: 5 1

1  
: 10  
가 :  
:  
110/70mmHg,  
100 / , 20 / , 37.2

: 14.9g/ ,  
42%, 10,700/mm<sup>3</sup>(seg : 77%, ly -  
mpho : 18%, mono : 5%, eosino : <1%), 20  
/mm<sup>3</sup>, 434 /mm<sup>3</sup>,  
CPK 1415 IU/L(N : 18 - 8  
6 IU/L), GOT 197 IU/L(N : 0 - 29 IU), GPT 48  
IU/L(N : 0 - 29IU), LDH 1446IU/L(N : 150 - 450)  
가 220mg/dl,  
79mg/dl . CK MB>10  
0ng/ml(N : <5ng/ml) 가

: 30

, , aVF leads  
Q T

co -  
nus false lumen true  
lumen intimal flap  
(Fig. 1). vasosp -  
asm (Fig. 2).

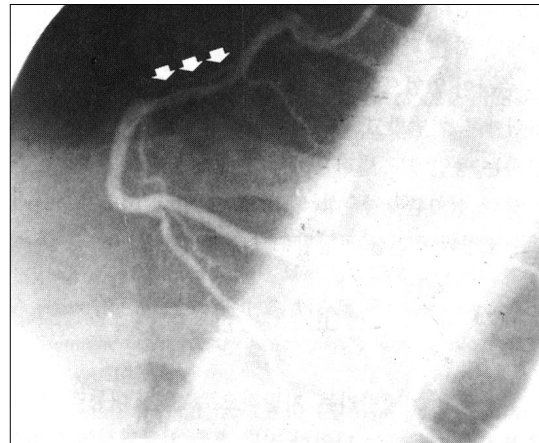


Fig. 1. Coronary angiogram, intimal flap was revealed between the conus branch and the right ventricular branch of RCA (Arrows).

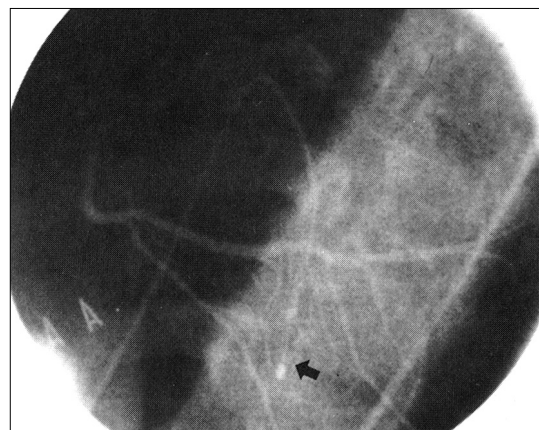
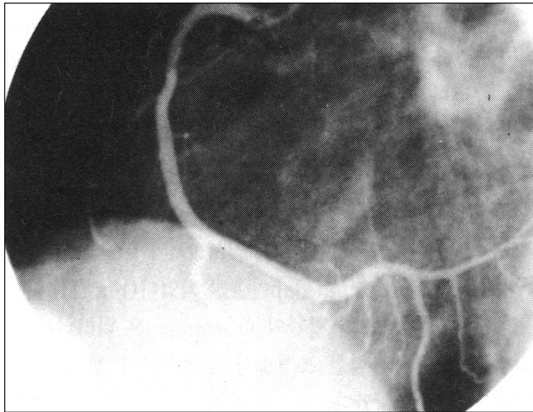


Fig. 2. After acetylcholine infusion, no vasospasm was observed on the RCA. Pacemaker electrode was inserted in RV apex endocardial wall (Arrow).



**Fig. 3.** Coronary angiogram three months later showed resolution of dissection.

106 78(74%) 가 27  
(35%) 가

5).

가 가  
, 가

( , ) 가

6). 가

, DeMaio

94 69 20%

14

25 4%

( 39 )

가(84%) 7).

3  
intimal flap  
(Fig. 3).

고 안

2cm 1/3  
3,8).

가

9).

3).

10).

Parry

DeMaio 1989

11).

94 4).

가

Thayer

가

가

. 1994 Efstratiou A 1975 1991

(nitrates)

2

13,14)

12)

가 가

15)

가

16)

DemMaio

요 약

## References

- 1) Pretty HC : *Dissecting aneurysm of coronary artery in a woman aged 42 years. : Rupture. British Medical Jou-*

*rnal* 1 : 667, 1931

- 2) Thayer JO, Healy R W, Maggs PR : *Spontaneous coronary artery dissection. Ann Thoracic Surgery.* 44 : 97, 1987
- 3) Virmani R, Forman MB : *Nonatherosclerotic myocardial infarction. In Virmani R (ed) : "Nonatherosclerotic ischemic heart disease." Raven Press, pp325, 1989*
- 4) DeMaio SJ Jr, Kinsella SH, Silvermann ME : *Clinical course and long-term prog-nosis of spontaneous coronary artery dissection. Am J Cardiol* 64 : 471, 1989
- 5) Efstratiou A, Singh B : *Combined spontaneous postpartum coronary artery dissection and pulmonary embolism with survival. Cathet and cardiovasc diagn* 31 : 29, 1994
- 6) Yeoh J-K, Choo H-H, Soo C-S, Lim Y-T, Yan C-H : *Spontaneous coronary artery dissection in young man with anterior myocardial infarction. Cathet and Cardiovasc Diagn.* 24 : 186, 1991
- 7) Mattfeldt T, Schwartz F, Kubler W : *Isolated spontaneous coronary artery dissection. A report on the differential diagnosis of coronary heart disease. Klin Worchemscher* 64 : 186, 1986
- 8) Smith JC : *Dissecting aneurysms of coronary arteries. Arch Pathol* 99 : 117, 1975
- 9) Robinowitz M, Virmani R, McAllister H : *Spontaneous coronary dissection and eosino-philic inflammation : A cause and effect relationship? Am J Med* 72 : 293, 1991
- 10) Bulkley B, Roberts W : *Dissecting aneurysm "hematoma" limited to coronary artery : A clinicopathologic study of six patients. Am J Med* 55 : 747, 1973
- 11) Parry R, MacConnell T, Wilde P : *Case report : Spontaneous coronary artery dissection. Clinical Radiology* 49 : 142, 1994
- 12) Gonzalez JJ, Hill JA, Conti CR : *Spontaneous coronary artery dissection treated with percutaneous transluminal angioplasty. Am J Cardiol* 63 : 885, 1989
- 13) Curiel P, Spinelli G, Petrella A : *Postpartum coronary artery dissection followed by heart transplantation. Am J Obstet Gynecol* 163 : 538, 1990
- 14) Movsesian MA, Wray RB : *Postpartum myocardial infarction. Br Heart J* 62 : 154, 1989
- 15) Engelman DT, Thayer JO, Derossi J : *Pregnancy related coronary artery dissection : A case report and collective review Connecticut Medicine* 57 (3) : 135, 1993
- 16) Connors JP, Thanavaro S, Shaw RC, et al : *Urgent myocardial revascularization for dissection of the left main coronary artery. J Thorac Cardiovasc Surg* 84 : 349, 1982