



Virulence-associated Genome Sequences of *Pasteurella canis* and Unique Toxin Gene Prevalence of *P. canis* and *Pasteurella multocida* Isolated from Humans and Companion Animals

Haruno Yoshida , Ph.D.¹, Jung-Min Kim , Ph.D.², Takahiro Maeda , B.P.¹, Mieko Goto , M.T.¹, Yuzo Tsuyuki , M.T.^{1,3}, Sachiko Shibata , M.T.⁴, Kenichi Shizuno , M.T.^{1,5}, Katsuko Okuzumi , M.T.¹, Jae-Seok Kim , M.D., Ph.D.², and Takashi Takahashi , M.D., Ph.D.¹

¹Laboratory of Infectious Diseases, Graduate School of Infection Control Sciences & Ōmura Satoshi Memorial Institute, Kitasato University, Tokyo, Japan;

²Department of Laboratory Medicine, Kangdong Sacred Heart Hospital, Hallym University College of Medicine, Seoul, Korea; ³Division of Clinical Laboratory, Sanritsu Zelkova Veterinary Laboratory, Tokyo, Japan; ⁴Division of Clinical Laboratory, Sanritsu Laboratory, Chiba, Japan; ⁵Department of Clinical Laboratory, Chiba Kaihin Municipal Hospital, Chiba, Japan

Background: Comparative analysis of virulence factors (VFs) between *Pasteurella canis* and *Pasteurella multocida* are lacking, although both cause zoonotic infections. We determined the virulence-associated genome sequence characteristics of *P. canis* and assessed the toxin gene prevalence unique to *P. canis* among clinical isolates of *P. canis* and *P. multocida*.

Methods: We selected 10 *P. canis* and 16 *P. multocida* whole-genome sequences (WGSs) from the National Center for Biotechnology database. The VFAnalyzer tool was used to estimate *P. canis*-characteristic VFs. Amino acid sequences of VFs were compared with multiple-aligned sequences. The genome structure containing *P. canis*-characteristic and adjacent loci was compared to the corresponding *P. multocida* genome structure. After designing primer sequences and assessing their accuracy, we examined the gene prevalence of the *P. canis*-characteristic VFs using PCR among clinical isolates of *P. multocida* and *P. canis*.

Results: Using VFAnalyzer, we found virulence-associated cytolethal distending toxin (*cdt*) *A-cdtB-cdtC* loci common to all *P. canis* WGSs that were not found in *P. multocida* WGSs. Similarities in the multiple alignments of CdtA-CdtB-CdtC amino acid sequences were found among the 10 *P. canis* WGSs. Shared or similar loci around *cdtA-cdtB-cdtC* were identified between the *P. canis* and *P. multocida* genome structures. The PCR-based *cdtA-cdtB-cdtC* prevalence differed for *P. canis* and *P. multocida* clinical isolates.

Conclusions: *P. canis*-specific *cdtA-cdtB-cdtC* prevalence was identified among clinical isolates. These three loci may be unique toxin genes and promising targets for the rapid identification of *P. canis* in clinical settings.

Key Words: *Pasteurella canis*, *Pasteurella multocida*, Genome sequence, Unique toxin gene, Cytolethal distending toxin, Japan, Korea, PCR, Zoonoses, Virulence factors

Received: September 7, 2022

Revision received: October 19, 2022

Accepted: November 18, 2022

Corresponding author:

Haruno Yoshida, Ph.D.
Laboratory of Infectious Diseases, Graduate
School of Infection Control Sciences &
Ōmura Satoshi Memorial Institute, Kitasato
University, 5-9-1 Shirokane, Minato-ku,
Tokyo 108-8641, Japan
Tel: +81-3-5791-6128
Fax: +81-3-5791-6441
E-mail: harunoy@isci.kitasato-u.ac.jp



© Korean Society for Laboratory Medicine

This is an Open Access article distributed under the terms of the Creative Commons Attribution Non-Commercial License (<https://creativecommons.org/licenses/by-nc/4.0>) which permits unrestricted non-commercial use, distribution, and reproduction in any medium, provided the original work is properly cited.

INTRODUCTION

Pasteurella multocida was first isolated by Louis Pasteur in 1881 from samples received during an epidemiological survey of a fowl cholera outbreak. *Pasteurella canis* was previously classified as *P. multocida* biotype 6 or “dog type” and was then reclassified in 1985 based on DNA homology [1]. *P. canis* is a tiny, non-motile, facultatively anaerobic, gram-negative coccobacillus belonging to a species of G-Proteobacteria in the family Pasteurellaceae. *P. canis* forms smaller colonies as against *P. multocida* that forms larger colonies when the isolates are inoculated onto blood agar plates and incubated in 5% CO₂ at 37°C for 24 hours, suggesting that *P. canis* has relatively slower growth capacity than *P. multocida* under the same culture conditions [2]. With reclassification, *P. multocida* was divided into three subspecies: *P. multocida* subsp. *multocida*, *P. multocida* subsp. *septica*, and *P. multocida* subsp. *gallicida* [1]. Phylogenetic trees showing relationships between 16S rRNA sequences and fragment sequences (449–473 bp) of the *sodA* gene from type strains of *Pasteurella* demonstrated that *P. canis* is more closely related to *P. stomatis* and *P. dagmatis* than to *P. multocida* subspp. *multocida*, *septica*, and *gallicida* [3]. With respect to the biochemical properties of *P. canis*, the ornithine decarboxylation property is positive, whereas the urease test is negative, and variable reactions are obtained for fermentation of trehalose and D-xylose [1]. Biotype 1 isolates are positive for indole formation, whereas biotype 2 isolates are negative for indole formation.

P. canis biotype 1 is mainly observed in the oral cavities of dogs and is also often isolated from the wound sites of humans after receiving dog bites [1], whereas biotype 2 isolates are mainly recovered from calves. There are several reports of *P. canis*-infected humans with bacteremia [4], soft tissue infection [5], eye infection [6], respiratory infection [7], septic arthritis [8], osteomyelitis [9], gastrointestinal infection [10], breast implant infection [11], and peritonitis [12]. The Emergency Medicine Animal Bite Infection Study Group [13] performed a bacteriological assay of infected wound sites resulting from dog and cat bites, showing that *P. canis* was the most common species isolated from wounds caused by dog bites, whereas *P. multocida* subspp. *multocida* and *septica* were the most common bacteria isolated from wounds caused by cat bites. Basic investigations of *P. canis* isolates are scarce, especially studies on its virulence factors (VFs).

The whole-genome sequence (WGS) of a blood-origin *P. canis* isolate from a diseased male Saint-Bernard dog in Japan was recently reported [2]. No comparative genomic analysis of VFs between *P. canis* and *P. multocida* has been performed to

date, although both cause zoonotic infections. This study aimed to compare the genome sequence characteristics of *P. canis* and *P. multocida* using the VF-detection tool VFAnalyzer, which provides an automatic analysis pipeline (<http://www.mgc.ac.cn/cgi-bin/VFs/v5/main.cgi?func=VFAnalyzer>) for the systematic screening of known or potential VFs in complete or draft bacterial genomes [14, 15]. We also assessed the prevalence of each unique VF gene for the two species (*P. canis* and *P. multocida*) among clinical isolates.

MATERIALS AND METHODS

P. canis and *P. multocida* WGSs

We extracted WGSs from *P. canis* (N=10) and *P. multocida* (N=16) deposited in the National Center for Biotechnology Information (NCBI) database (updated June 3, 2022) for this retrospective study. Sixteen *P. multocida* WGSs were selected covering various sequence types (including newly identified sequence types), demonstrating the high genomic diversity of this species. Among the 10 *P. canis* WGSs, seven are newly added, including three human isolates (two from Korea and one from Japan) and four dog isolates (three from Korea and one from Japan). Table 1 lists the characteristics of the *P. canis* and *P. multocida* WGSs (including the strain, host, isolation source, assembly level, collection date/geographic location, and GenBank accession number). Information on the host, isolation source, collection date, and geographic location was retrieved from the corresponding BioSample website or datasheets of collection companies. The included reference WGSs were *P. canis* National Collection of Type Cultures (NCTC) 11621(T), *P. multocida* subsp. *multocida* American Type Culture Collection (ATCC) 43137(T), *P. multocida* subsp. *septica* NCTC 11995(T), and *P. multocida* subsp. *gallicida* NCTC 10204(T).

Estimation of *P. canis*-characteristic VFs and multiple amino acid sequence alignment

To compare the VFs of *P. canis* and *P. multocida*, the VFAnalyzer tool from the VF database (<http://www.mgc.ac.cn/VFs/>) was used. Any publicly available bacterial genome can be used as input for VFAnalyzer, either from the pre-downloaded genome list or via any valid GenBank accession number. The genus *Haemophilus* was selected for the analysis because the option of *Pasteurella* was not available for selection. Each WGS file (complete or draft genome in GenBank format) from *P. canis* (N=10) and *P. multocida* (N=16) was entered into VFAnalyzer, and the data of known or potential VFs, related genes, and corresponding loci

Table 1. Whole-genome sequences of *Pasteurella canis* and *Pasteurella multocida* available in the National Center for Biotechnology Information GenBank

Species or subspecies (sequence type)	Strain	Host	Isolation source	Assembly level	Collection date and location	GenBank accession number
<i>P. canis</i>	NCTC 11621(T)	Dog	Throat	Contig	1900/1983, unknown	UGTV000000000.1
<i>P. canis</i>	PA42*	Dog	Blood	Contig	2021, Japan	BPUX000000000.1
<i>P. canis</i>	HL_NV12211†	Dog	Pus	Complete	2020, Korea	CP085871.1
<i>P. canis</i>	HL_D3081	Dog	Pus	Complete	2019, Korea	CP085873.1
<i>P. canis</i>	HL_D1250	Dog	Throat	Complete	2018, Korea	CP085791.1
<i>P. canis</i>	PA57*	Human	Pus	Contig	2021, Japan	BQFX000000000.1
<i>P. canis</i>	NCTC 11650	Human	Dog bite	Contig	1900/1984, unknown	UATN000000000.1
<i>P. canis</i>	QBSD	Human	Pus	Contig	2019, China	WUMP000000000.1
<i>P. canis</i>	HL_1500	Human	Pus	Complete	2017, Korea	CP083396.1
<i>P. canis</i>	HL268	Human	Pus	Complete	2004, Korea	CP083262.1
<i>P. multocida</i> subsp. <i>multocida</i> (ST3)	NCTC 10322(T)/ATCC 43137(T)†	Porcine	Unknown	Complete	1900/1962, unknown	LT906458.1
<i>P. multocida</i> subsp. <i>gallicida</i> (ST42)	NCTC 10204(T)/ATCC 51689(T)	Cow	Unknown	Complete	1900/1960, unknown	LR134298.1
<i>P. multocida</i> subsp. <i>multocida</i> (ST135)	S298D	Dog	Oral swab	Contig	2016, Greece	PSQH000000000.1
<i>P. multocida</i> subsp. <i>septica</i> (ST30)	KVNON-213	Cat	Nasal cavity	Complete	2018, Korea	CP049756.1
<i>P. multocida</i> subsp. <i>gallicida</i> (ST25)	MSP58	Cat	Clinical sample	Contig	2019, USA	SJXC000000000.1
<i>P. multocida</i> subsp. <i>septica</i> (ST43)	NCTC 11995(T)/ATCC 51687(T)	Human	Abscess by cat bite	Contig	1900/1987, France	UGSV000000000.1
<i>P. multocida</i> subsp. <i>multocida</i> (ST131)	NCTC 10382	Human	Infected finger	Complete	1964, unknown	LS483473.1
<i>P. multocida</i> subsp. <i>multocida</i> (ST135)	PY81579	Human	Pus	Contig	2016, Greece	PSQI000000000.1
<i>P. multocida</i> subsp. <i>septica</i> (new ST; allele 18-21-28-15-48-17-45)	NCTC 11619	Human	Wound	Complete	1900/1983, unknown	LR134514.1
<i>P. multocida</i> subsp. <i>septica</i> (new ST; allele 11-21-32-16-18-17-55)	NCTC 11620	Human	Unknown	Contig	1900/1983, unknown	UGSW000000000.1
<i>P. multocida</i> subsp. <i>septica</i> (new ST; allele 18-56-37-16-18-18-55)	FDAARGOS_384	Human	Abscess	Complete	2015, USA	CP023516.1
<i>P. multocida</i> subsp. <i>septica</i> (new ST; allele 18-56-37-16-18-18-55)	FDAARGOS_385	Human	Wound	Complete	2015, USA	CP023972.1
<i>P. multocida</i> subsp. <i>gallicida</i> (ST128)	HuN001	Human	Unknown	Complete	2021, China	CP073238.1
<i>P. multocida</i> subsp. <i>septica</i> (ST137)	161215033201-1	Human	Right lung	Complete	2016, the Netherlands	CP026744.1
<i>P. multocida</i> subsp. <i>septica</i> (new ST; allele 20-58-28-15-18-17-24)	FDAARGOS_261	Human	Blood	Contig	2014, USA	NBTJ000000000.2
<i>P. multocida</i> subsp. <i>multocida</i> (new ST; allele 16-19-14-6-26-12-11)	SMC1	Human	Finger bone biopsy	Contig	2015, Malaysia	LNC000000000.1

*Strains used as positive controls in PCR for clinical isolates; †Strains selected to construct genome structure graphics.

(along with their nucleotide positions/sequences) for each WGS were output. Putative *P. canis*-characteristic VFs that were not present among the *P. multocida*-characteristic VFs were estimated. All analyses were conducted at Ōmura Satoshi Memorial Institute, Kitasato University.

To evaluate the uniqueness of the estimated VFs, the corresponding nucleotide/amino acid (AA) sequences were inserted

into the NCBI nucleotide/protein–nucleotide Basic Local Alignment Search Tool (BLASTn/BLASTp; <https://blast.ncbi.nlm.nih.gov/Blast.cgi>). To assess the percent similarities among deduced AA sequences obtained from the nucleotide sequences, multiple alignments were performed using the web-based tool ClustalW (<https://www.genome.jp/tools-bin/clustalw>).

Genome structure comparison

The complete circular genomic structure was constructed for *P. canis* HL_NV12211 (CP085871.1) as a representative, based on the WGS data obtained in this study, which is now recommended in the NCBI database as the *P. canis* reference genome (<https://www.ncbi.nlm.nih.gov/data-hub/taxonomy/753/>) (Table 1). This isolate was recovered from a Korean canine pus sample (Table 1). The WGS from isolate ATCC 43137(T) (CP008918.1) was used as a representative *P. multocida* subsp. *multocida* genome (Table 1) to construct the comparative genomic structure. The gene information on HL_NV12211 and ATCC 43137(T) WGSs was obtained from GenBank in the NCBI database, including the directions and lengths of genes, locus tags, and gene–gene distances. The prokaryotic genome annotation pipeline was used as a tool for annotation revision. We assessed the shared, similar, and unique loci between HL_NV12211 and ATCC 43137(T) WGSs.

Assessing the accuracy of primer sequences for PCR

We designed PCR primer sets (forward and reverse) using the web-based Primer3Plus tool (<https://www.primer3plus.com>). The specificity of the primer sequences was examined by inserting them into NCBI BLASTn. To assess the accuracy of the primer sequences, we conducted simulated PCR assays using Serial Cloner 2.6 (http://serialbasics.free.fr/Serial_Cloner.html) based on the obtained WGSs [16, 17].

Prevalence of unique genes among isolates from humans and companion animals

Companion animal- and human-origin isolates from Japan were identified from PCR-based 16S rRNA sequencing data [18]. Thirty *P. canis* isolates from dogs (N=16), a cat (N=1), and humans (N=13) and 48 *P. multocida* isolates from dogs (N=5), cats (N=27), and humans (N=16) were included for this analysis. Isolation sources were mainly the pus/skin (N=44), upper/lower respiratory tract (N=25), and ear (N=6), along with the eye, blood, or pleural effusion (N=1 each). The collection years were mainly 2015–2019 (N=62) and 2021 (N=12), along with 1997, 1998, 2010, and 2013 (N=1 each). The geographic locations (prefectures in Japan) were mainly Chiba (N=40), Tokyo (N=15), Ibaraki (N=6), Saitama (N=5), Kanagawa (N=3), Aichi (N=3), Gifu (N=2), and Nagasaki (N=2), along with Okayama and Fukuoka (N=1 each).

We used primer sets for PCR amplification that were identical to the simulation PCR-based primer sets. One isolate (either PA42 or PA57) was used as a positive control (Table 1), and

DNase/RNase/protease-free water was used as a negative control in each PCR assay. PCR products were examined by 1.5% agarose gel electrophoresis in Tris-acetate–EDTA buffer. Direct sequencing of several PCR-positive products was performed on Applied Biosystems 3730xl DNA Analyzer with BigDye Terminator V3.1 (Thermo Fisher Scientific, Waltham, MA, USA). The amplification primers were used for the sequencing reaction. The prevalence of each estimated *P. canis*-unique VF gene was evaluated in all clinical isolates.

Ethics approval

The following ethics committees reviewed and approved our study design to maintain the privacy of humans and companion animals: Kitasato Institute Hospital (Tokyo, Japan; approval no. 21061), Kitasato University Medical Center (Saitama, Japan; approval no. 2021033), Sanritsu Zelkova Veterinary Laboratory (Tokyo, Japan; approval no. SZ20220525), Sanritsu Laboratory (Chiba, Japan; approval no. 22-01), and Chiba Kaihin Municipal Hospital (Chiba, Japan; approval no. 2021-02).

Background information (host species, isolation source, collection date, and geographic location) for the selected WGSs is publicly available from the online NCBI database.

Statistical analysis

Fisher's exact test (two-sided) was performed to analyze the significance of the association of the prevalence of each unique VF gene between *P. canis* and *P. multocida*. The associations of isolation sources (pus/skin, upper/lower respiratory tract, and ear) with host (animals, N=49; humans, N=29) or isolate (*P. canis*, N=30; *P. multocida*, N=48) were also determined using Fisher's exact test (two-sided). Statcel4 (OMS Publisher, Tokyo, Japan) was used for statistical analysis. $P < 0.05$ indicated statistical significance.

RESULTS

Estimation of *P. canis*-characteristic VFs

The VFs obtained from VFAnalyzer in querying the *Haemophilus* genus included those related to adherence (e.g., HMW1, HMW2, hemagglutinating pili), endotoxin (lipooligosaccharide), immune evasion (e.g., exopolysaccharide, IgA1 protease, P2 porin), iron uptake (e.g., *Haemophilus* iron transport locus, heme biosynthesis, heme/hemopexin-binding complex), toxins (cytotoxic distending toxin [Cdt] and hemolysin), cell-surface components (trehalose-recycling ABC transporter), nutritional virulence (pyrimidine biosynthesis from *Francisella*), secretion system (Hcp

CdtA amino acid No.	44	45	46	47	48	49	50	51	59	60	61	62	63	64	65	71	72	73	74	75	76	77	83	84	85	86	87	88	89	90	91	92	93	94	95	96	97	200	201	202	203	204	205	206
HL_NV12211	I	Q	F	K	P	L	L	S	N	V	L	H	S	S	Y	K	E	K	T	P	E	P	L	T	Q	P	A	P	R	S	K	G	G	N	T	L	V	K	S	A	A	Q	G	N
NCTC11621(T)	I	Q	F	K	T	L	L	S	N	V	L	H	S	S	Y	K	E	K	T	P	E	P	L	T	Q	P	A	P	R	S	K	G	G	D	T	L	V	K	S	A	A	Q	G	N
NCTC11650	I	Q	F	K	P	L	L	S	N	V	L	H	S	S	Y	K	E	K	T	P	E	P	L	T	Q	P	V	P	R	S	K	G	V	N	T	L	V	K	S	A	A	Q	G	N
PA42	I	Q	F	K	P	L	L	S	N	V	L	H	S	S	Y	K	E	K	T	P	E	P	L	T	Q	P	A	P	R	S	K	G	G	N	T	L	V	K	S	A	A	Q	G	N
PA57	I	Q	F	N	T	L	L	S	N	V	L	H	S	S	Y	K	E	K	T	P	E	P	L	T	Q	P	A	P	R	S	K	G	G	D	T	L	V	K	S	A	A	Q	G	N
HL_268	I	Q	F	K	P	L	L	S	N	V	L	H	S	S	Y	K	E	K	T	P	E	P	L	T	Q	S	A	P	R	S	K	G	G	N	T	L	V	K	S	A	S	Q	G	N
HL_1500	I	Q	F	K	P	L	L	S	N	V	L	H	S	S	Y	K	E	K	T	P	E	P	L	T	Q	S	A	P	R	S	K	G	G	N	T	L	V	K	S	A	S	Q	G	N
HL_D1250	I	Q	F	K	T	L	L	S	N	V	L	Y	S	S	Y	K	E	K	T	P	E	P	L	T	Q	P	A	P	R	S	K	G	G	D	T	L	V	K	S	A	A	Q	G	N
HL_D3081	I	Q	F	K	P	L	L	S	N	V	L	H	S	S	Y	K	E	K	I	P	E	P	L	T	Q	P	A	P	R	S	K	G	G	D	T	L	V	K	S	A	A	Q	G	N
QBSD	I	Q	F	K	T	L	L	S	N	V	L	H	S	S	Y	K	E	K	T	P	E	P	L	T	Q	P	A	P	R	S	K	G	G	D	T	L	V	K	S	A	A	Q	G	N
	*	*	*	*	*	*	*	*	*	*	*	*	*	*	*	*	*	*	*	*	*	*	*	*	*	*	*	*	*	*	*	*	*	*	*	*	*	*	*	*	*	*	*	*
	:	:	:	:	:	:	:	:	:	:	:	:	:	:	:	:	:	:	:	:	:	:	:	:	:	:	:	:	:	:	:	:	:	:	:	:	:	:	:	:	:	:	:	:

CdtB amino acid No.	6	7	8	9	10	11	12	100	101	102	103	104	105	106	185	186	187	188	189	190	191	237	238	239	240	241	242	243	244	245	246	247	248	249	250	251	252	253						
HL_NV12211	Q	L	S	L	I	F	C	R	P	N	T	V	Y	I	E	R	R	G	Y	S	W	A	I	L	R	D	A	N	L	P	R	R	E	Q	A	R	E	R						
NCTC11621(T)	Q	L	S	L	I	F	C	R	P	N	T	V	Y	I	E	R	R	R	Y	S	W	A	I	L	H	D	A	N	L	P	R	R	E	Q	A	R	E	R						
NCTC11650	Q	L	S	L	I	F	C	R	P	N	I	V	Y	I	E	R	R	G	Y	S	W	A	I	L	H	D	A	N	L	P	R	R	E	Q	T	R	E	R						
PA42	Q	L	S	L	I	F	C	R	P	N	T	V	Y	I	E	R	R	G	Y	S	W	A	I	L	R	D	A	N	L	P	R	R	E	Q	A	R	E	R						
PA57	Q	L	S	F	I	F	C	R	P	N	T	V	Y	I	E	R	R	R	Y	S	W	A	I	L	H	D	V	N	L	P	R	R	E	Q	A	R	E	R						
HL_268	Q	L	S	L	I	F	C	R	P	N	T	V	Y	I	E	R	R	G	Y	S	W	A	I	L	H	D	A	N	L	P	R	R	E	Q	A	R	E	R						
HL_1500	Q	L	S	L	I	F	C	R	P	N	T	V	Y	I	E	R	R	G	Y	S	W	A	I	L	H	D	A	N	L	P	R	R	E	Q	A	R	E	R						
HL_D1250	Q	L	S	L	I	F	C	R	P	N	T	V	Y	I	E	R	R	G	Y	S	W	A	I	L	H	D	A	N	L	P	R	R	E	Q	A	R	E	R						
HL_D3081	Q	L	S	L	I	F	C	R	P	N	T	V	Y	I	E	R	R	R	Y	S	W	A	I	L	H	D	A	N	L	P	R	R	E	Q	A	R	E	R						
QBSD	Q	L	S	L	I	F	C	R	P	N	T	V	Y	I	E	R	R	G	Y	S	W	A	I	L	H	D	A	N	L	P	R	R	E	Q	A	R	E	R						
	*	*	*	*	*	*	*	*	*	*	*	*	*	*	*	*	*	*	*	*	*	*	*	*	*	*	*	*	*	*	*	*	*	*	*	*	*	*	*	*	*	*	*	
	:	:	:	:	:	:	:	:	:	:	:	:	:	:	:	:	:	:	:	:	:	:	:	:	:	:	:	:	:	:	:	:	:	:	:	:	:	:	:	:	:	:	:	:

CdtC amino acid No.	1	2	3	4	28	29	30	31	32	33	34	138	139	140	141	142	143	144
HL_NV12211	-	M	K	K	T	T	Y	P	D	V	E	R	D	F	A	D	L	N
NCTC11621(T)	M	M	K	K	T	T	Y	P	D	V	E	R	D	F	A	D	L	N
NCTC11650	M	M	K	K	T	T	Y	P	D	V	E	R	D	F	D	D	L	N
PA42	-	M	K	K	T	T	Y	P	D	V	E	R	D	F	A	D	L	N
PA57	-	M	K	K	T	T	Y	L	D	V	E	R	D	F	D	D	L	N
HL_268	-	M	K	K	T	T	Y	P	D	V	E	R	D	F	D	D	L	N
HL_1500	-	M	K	K	T	T	Y	P	D	V	E	R	D	F	D	D	L	N
HL_D1250	-	M	K	K	T	T	Y	P	D	V	E	R	D	F	D	D	L	N
HL_D3081	-	M	K	K	T	T	Y	P	D	V	E	R	D	F	A	D	L	N
QBSD	-	M	K	K	T	T	Y	L	D	V	E	R	D	F	D	D	L	N
	*	*	*	*	*	*	*	*	*	*	*	*	*	*	*	*	*	*
	:	:	:	:	:	:	:	:	:	:	:	:	:	:	:	:	:	:

Fig. 1. Multiple amino acid (AA) sequence alignments of cytolethal distending toxin (CdtA, B, and C between HL_NV12211 (harboring CdtA-CdtB-CdtC of 251 AAs, 280 AAs, and 180 AAs, respectively) and the remaining nine whole-genome sequences using ClustalW version 2.1. “*” indicates positions having a single, fully conserved residue; “:” indicates that one of the following “strong” groups (STANEQK/NHQK/NDEQ/QHRK/MIL/MILF/HY/FW) is fully conserved; and “.” indicates that one of the following “weaker” groups (CSA/ATV/SAG/STNK/STPA/SGND/SNDEQK/NDEQK/NEQHRK/FVLM/HFY) is fully conserved. Gray shading shows AA substitutions compared to the consensus sequence of HL_NV12211.

secretion island-1-encoded type VI secretion system [H1-T6SS] and *Legionella* vir homologs [Lvh] type IVa secretion system), stress adaptation (catalase from *Neisseria* and SodCl from *Salmonella*), and antiphagocytosis (capsular polysaccharide from *Vibrio* and capsule from *Klebsiella*). The prevalence and composition of VFs, related genes, and corresponding loci varied between the *P. canis* and *P. multocida* genomes. We identified *cdtA*–*cdtB*–*cdtC* sequences common to the 10 *P. canis* WGSs, which were absent among the 16 *P. multocida* WGSs; thus, the *cdtA*–*cdtB*–*cdtC* sequences were considered potential *P. canis*-characteristic VFs. The HL_NV12211 WGS included a *cdtA* locus of 756 bp (nucleotide positions 2,095,545 to 2,096,300), a *cdtB* locus of 843 bp (nucleotides 2,096,316 to 2,097,158), and a *cdtC* locus of 543 bp (nucleotides 2,097,169 to 2,097,711).

Multiple nucleotide/AA sequence alignment of the *cdtA*–*cdtB*–*cdtC* loci of the *P. canis* HL_NV12211 WGS showed high sequence similarities among *P. canis* populations but not among populations of *P. multocida* or other *Pasteurella* species. Fig. 1 shows the multiple AA sequence alignments of CdtA–CdtB–CdtC loci. High similarities (percentages) of deduced AA sequences were found between HL_NV12211 CdtA (251 AA), CdtB (280 AA), and CdtC (180 AA) and the sequences of the other *P. canis* genomes, with the lowest similarities of 98.8%, 98.6%, and 98.9%, respectively.

Genome structures of *P. canis* and *P. multocida*

Fig. 2 shows the genome structure containing the *cdtA*–*cdtB*–*cdtC* loci and adjacent loci in the *P. canis* HL_NV12211 WGS. Compared to that in the ATCC 43137(T) WGS, shared loci (*relA*,

recO, *rsmE*, *ruvX*/DR93_65, *eno*, and *pyrG*), similar loci (*rlmD*/*rumA* with AA sequence similarity of 67.3% and K7G93_001967/DR93_66 with AA sequence similarity of 89.2%), and loci were identified in the *P. canis* WGS (*cdtA*–*cdtB*–*cdtC* and K7G93_001965) but not in the *P. multocida* WGS. The loci K7G93_001965, K7G93_001967, and DR93_66 are predicted to encode hypothetical proteins.

Accuracy of primer sequences for PCR

Primer sequences are located within the corresponding open reading frames to amplify sequences with expected sizes of 693 bp, 582 bp, and 433 bp. Table 2 shows the oligonucleotide primers and their corresponding melting temperature (T_m) values. PCR was performed with 30 cycles consisting of denaturation at 98°C for 10 seconds, annealing at 52°C for 30 seconds, and extension at 72°C for 45 seconds to amplify *cdtA*; 30 cycles consisting of denaturation at 98°C for 10 seconds, annealing at 53°C for 30 seconds, and extension at 72°C for 40 seconds to amplify *cdtB*; and 30 cycles consisting of denaturation at 98°C for 10 seconds, annealing at 52°C for 30 seconds, and extension at 72°C for 30 seconds to amplify *cdtC*.

Prevalence of unique genes among isolates from humans and companion animals

We found no associations between the isolation sources and host (animals/humans) or pathogen species (*P. canis*/*P. multocida*): pus/skin vs. host/pathogen species $P=0.102/P=1.0$, respiratory tract vs. host/pathogen species $P=1.0/P=0.619$, and ear vs. host/pathogen species $P=0.079/P=0.397$.

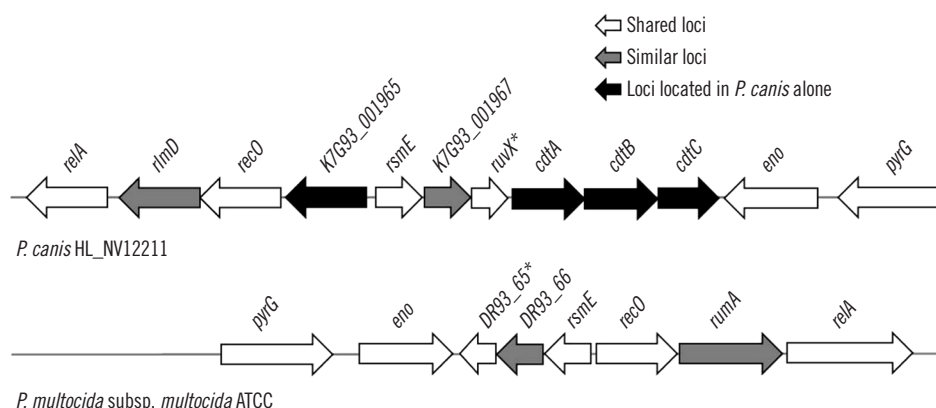


Fig. 2. Genome structure containing the cytolethal distending toxin (*cdtA*–*cdtB*–*cdtC*) loci of *Pasteurella canis* and adjacent loci from strain HL_NV12211 (GenBank accession no. CP085871.1) (upper) and the comparative structure from *Pasteurella multocida* subsp. *multocida* ATCC 43137(T) (GenBank accession no. CP008918.1) (lower). Asterisks show putative Holliday junction resolvase. K7G93_001965, K7G93_001967, and DR93_66 represent loci encoding hypothetical proteins.

Abbreviations: *relA*, GTP diphosphokinase; *rlmD* and *rumA*, 23S rRNA (uracil(1939)-C(5))-methyltransferase; *recO*, DNA repair protein; *rsmE*, 16S rRNA (uracil(1498)-N(3))-methyltransferase; *eno*, phosphopyruvate hydratase; *pyrG*, CTP synthase.

Table 2. Oligonucleotide primers for targeted genes and their PCR amplicon sizes

Target gene (encoding protein)	Primer*	Direction	Sequence (5' → 3') (length, k-mer)	T _m (°C) [†]	Expected amplicon size
<i>cdtA</i> (cytolethal distending toxin A)	Pc_cdtA_F	Forward	TCAGCAGATGTGAATTGTCCTC (23)	54	693 bp
	Pc_cdtA_R	Reverse	ATCGCAGTCGCATTAATAGC (21)	54	
<i>cdtB</i> (cytolethal distending toxin B)	Pc_cdtB_F	Forward	TCCAAGAGCGGGTACTTTG (20)	54	582 bp
	Pc_cdtB_R	Reverse	AACTGGCACCACATACGCTCA (20)	54	
<i>cdtC</i> (cytolethal distending toxin C)	Pc_cdtC_F	Forward	GAGTTATCACCACCTCCACGT (21)	53	433 bp
	Pc_cdtC_R	Reverse	GCGGTACTAAATTTTACTTGGTCCA (26)	55	

*The same primers were used for both the PCR amplification and direct sequencing; [†]T_m values were calculated using the nearest-neighbor method. Abbreviation: T_m, melting temperature.

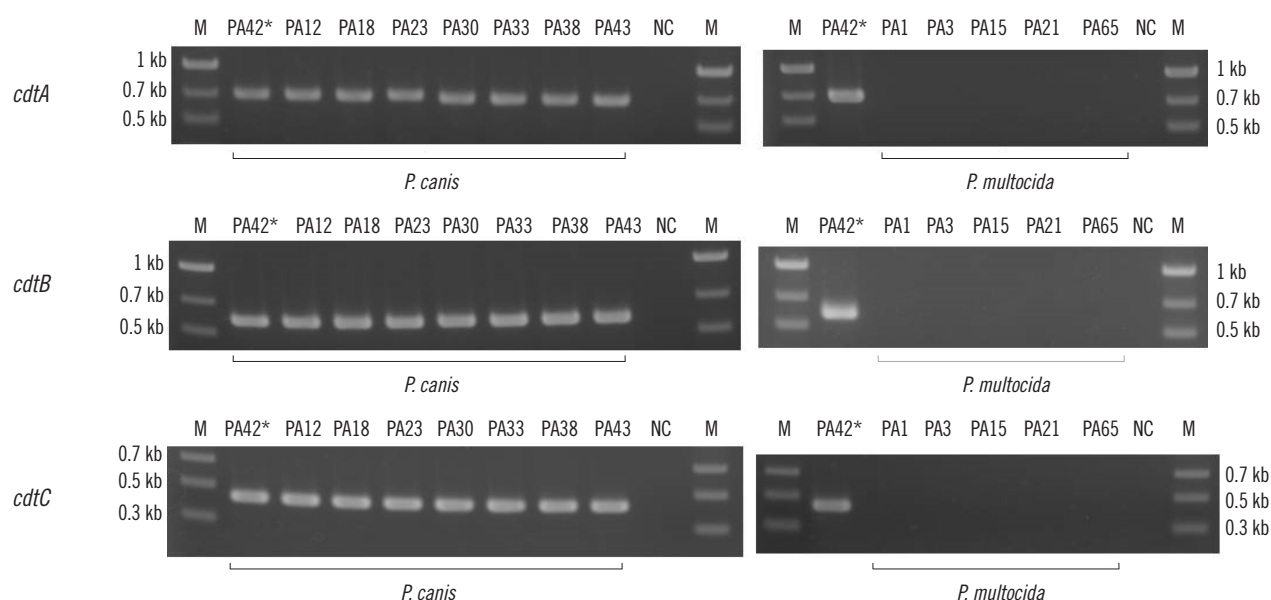


Fig. 3. Gel electrophoresis images of amplified *cdtA*–*cdtB*–*cdtC* products using DNA from clinical isolates. Asterisks indicate the positive control isolate (PA42). Abbreviations: M, size marker; NC, negative control.

Table 3. Prevalence of cytolethal distending toxin (*cdt*) genes in *Pasteurella canis* and *Pasteurella multocida* isolated from different hosts

Target gene	<i>P. canis</i> isolates (N=30)		<i>P. multocida</i> isolates (N=48)		<i>P</i> *
	Dog/cat origin (N=17)	Human origin (N=13)	Dog/cat origin (N=32)	Human origin (N=16)	
<i>cdtA</i>	17/17	13/13	0/32	0/16	<0.01
<i>cdtB</i>	17/17	13/13	0/32	0/16	<0.01
<i>cdtC</i>	17/17	13/13	0/32	0/16	<0.01

*Fisher's exact test (two-sided) was used to assess the difference in the prevalence of *cdt* according to species.

Fig. 3 shows gel electrophoresis images of the amplified *cdtA*–*cdtB*–*cdtC* products using DNA extracted from the clinical isolates. Table 3 shows the prevalence of each *cdt* gene in *P. canis* and *P. multocida* isolates. High similarities ($\geq 98.6\%$) were found between *cdtA* and *cdtB*–*cdtC* sequences using several PCR-positive products (N=11 for each gene) and reported HL_NV12211

cdtA–*cdtB*–*cdtC* sequences. The nucleotide sequences obtained by PCR amplification and direct sequencing in 11 isolates have been deposited in DDBJ/EMBL/GenBank under accession numbers LC716775–LC716807.

The prevalence of *cdtA*–*cdtB*–*cdtC* was significantly associated with *P. canis* rather than with *P. multocida* ($P < 0.01$).

DISCUSSION

We conducted a challenging study to find virulence-associated genome sequences specific to *P. canis*. Based on the “One Health” concept [19], which is a comprehensive health control strategy for humans, contact animals, and related environments, bacterial pathogens with VFs that may be circulating should be carefully monitored to maintain an environment of total health. Using VFAnalyzer, we identified *cdtA*–*cdtB*–*cdtC* loci as potential *P. canis*-specific VFs, which were not identified in the WGSs of *P. dagmatis* NCTC 11617(T) (LT906448.1), *P. testudinis* NCTC 12150(T) (UGSY000000000.1), *P. skyensis* 95A1 (type strain) (CP016180.1), *P. bettyae* NCTC 10535(T) (UFRH000000000.1), and *P. bettyae* CCUG 2042 (AJSX000000000.1). These three loci may be unique toxin genes and promising targets for the rapid identification of *P. canis* in clinical settings.

Based on a search of the keywords “pasteurella canis, cytolthal distending toxin” or “pasteurella canis, cdt” in the PubMed database (<https://pubmed.ncbi.nlm.nih.gov/>), there were no hits for related manuscripts as of September 3, 2022. However, Fukushima, *et al.* [20] reported that *P. canis* isolates from the dental plaques of dogs with periodontal disease harbor the *cdtA*–*cdtB*–*cdtC* loci. Thus, our study provides a rare description of *cdt* genes in *P. canis* isolates from humans and companion animals in Korea and Japan.

Cdt was discovered in *Escherichia coli* in 1987 [21], and similar toxin activities have been documented in other enteric pathogens, including *Shigella* spp. and *Campylobacter* spp. [21, 22]. Cdt can modulate the host cell cycle by suppressing the G2/M transition. Bacterial genotoxins trigger single-strand and double-strand breaks in DNA of eukaryotic cells and are functionally homologous to mammalian DNase I, leading to alterations in the DNA damage response [23], resulting in cell aging, apoptosis, and genomic instability, which contribute to tumor initiation and progression. Three loci within an operon were identified: *cdtA*–*cdtB*–*cdtC* [24]. Among the three proteins encoded by *cdtA*–*cdtB*–*cdtC*, CdtB was shown to possess nuclease activity [25]. CdtA–CdtC is required for delivering CdtB into host cells, allowing CdtB to translocate to the nucleus, resulting in DNA damage [26]. CdtB nuclease activity in eukaryotic cells can induce an altered DNA damage response, which promotes genomic instability, disturbs the cell cycle, and establishes a chronic pro-inflammatory environment in the host [27].

Using BLASTp on the NCBI web server, we examined similarities in CdtA–CdtB–CdtC AA sequences between isolate HL_NV-12211 and other species. The CdtA AA sequence was similar to

that of *Aggregatibacter actinomycetemcomitans* strain UP14 (220 AA and 66.5% similarity) and *Haemophilus ducreyi* strain 35000HP (223 AA and 65.1% similarity); CdtB was similar to *A. actinomycetemcomitans* NCTC_9710(T) (283 AA and 90.5% similarity) and *H. ducreyi* 35000HP (283 AA and 90.5% similarity); and CdtC was similar to *H. ducreyi* 35000HP (186 AA and 73.6% similarity) and *A. actinomycetemcomitans* strain RhAa3 (180 AA and 75.0% similarity). The family Pasteurellaceae mainly consists of the genera *Pasteurella*, *Haemophilus*, *Aggregatibacter*, and *Actinobacillus* as human pathogenic microorganisms. Thus, *P. canis* CdtA–CdtB–CdtC AA sequences are homologous to those of other species in the family Pasteurellaceae. For example, *A. actinomycetemcomitans*, a periodontal pathogen colonizing the human oral cavity, possesses CdtA–CdtB–CdtC as an exotoxin [28]. The possibility that *P. canis* is related to periodontal disease in dogs and cats has been reported [20]. A functional study of *H. ducreyi* CdtB and the endocytosis of CdtA dissociated from *H. ducreyi* CdtB–CdtC were recently reported [29, 30]. Further biological and functional analyses of *P. canis* CdtA–CdtB–CdtC are needed.

This study has two main limitations. First, we included five complete and five contig WGSs. We cannot deny the possibility that other characteristic genome sequences may be located within the gapped regions of contig WGSs. To enhance the quality of comparative genome analysis, the complete WGSs of *P. canis* should be determined and uploaded to the NCBI database. Second, we obtained limited information on host demographics (host species, isolation source, collection date, and geographic location). Detailed information on the underlying situation, diagnosis of infections, therapeutic strategies, and outcomes need to be collected from medical doctors and veterinarians.

Our observations suggest the prevalence of *cdtA*–*cdtB*–*cdtC* genes (as potential VFs) as a unique characteristic of *P. canis* isolates from humans and companion animals in Japan. Fukushima, *et al.* [20] found that supernatants from bacterial lysis had toxic and lethal effects on HeLa cells. We also plan to demonstrate the presence of CdtA–CdtB–CdtC within the supernatants of the isolate broth cultures and to evaluate the toxic and lethal effects on HeLa cells and other human cell lines. Future studies are also needed to monitor variations in *cdtA*–*cdtB*–*cdtC* prevalence among similar populations. The clinical significance of CdtA–CdtB–CdtC in humans and companion animals should be clarified to facilitate interpretation and clinical decision-making for medical doctors and veterinarians.

ACKNOWLEDGMENTS

We thank Goro Kurita, D.M.V. (Laboratory of Infectious Diseases, Graduate School of Infection Control Sciences, Kitasato University, Tokyo, Japan), Prof. Noriyuki Nagano (Department of Medical Sciences, Graduate School of Medicine, Science and Technology, Shinshu University, Nagano, Japan), and Mr. Tomohiro Fujita (Department of Clinical Laboratory, Kitasato University Medical Center, Kitasato University, Saitama, Japan) for their assistance.

AUTHOR CONTRIBUTIONS

Conceptualization: Yoshida H and Takahashi T; Investigation: Yoshida H; Formal Analysis: Yoshida H, Kim J-M, Maeda T, Goto M, Kim J-S, and Okuzumi K; Resources: Tsuyuki Y, Shibata S, Shizuno K, Okuzumi K, and Takahashi T; Writing — Original Draft Preparation: Takahashi T; Writing — Review and Editing: Yoshida H.

CONFLICTS OF INTEREST

None declared.

RESEARCH FUNDING

This work was supported in part by the General Research Fund (2020–2022) from the Graduate School of Infection Control Sciences & Ōmura Satoshi Memorial Institute.

ORCID

Haruno Yoshida	https://orcid.org/0000-0001-5346-5037
Jung-Min Kim	https://orcid.org/0000-0003-0809-6222
Takahiro Maeda	https://orcid.org/0000-0003-0899-2860
Mieko Goto	https://orcid.org/0000-0001-7443-2090
Yuzo Tsuyuki	https://orcid.org/0000-0002-9399-909X
Sachiko Shibata	https://orcid.org/0000-0002-1918-2727
Kenichi Shizuno	https://orcid.org/0000-0002-2100-4516
Katsuko Okuzumi	https://orcid.org/0000-0001-6443-5853
Jae-Seok Kim	https://orcid.org/0000-0001-6025-0341
Takashi Takahashi	https://orcid.org/0000-0003-4131-2062

REFERENCES

- Mutters R, Ihm P, Pohl S, Frederiksen W, Mannheim W. Reclassification of the genus *Pasteurella* Trevisan 1887 on the basis of deoxyribonucleic acid homology, with proposals for the new species *Pasteurella dagmatidis*, *Pasteurella canis*, *Pasteurella stomatis*, *Pasteurella anatis*, and *Pasteurella langaa*. Int J Syst Bacteriol 1985;35:309-22.
- Maeda T, Yoshida H, Kim JM, Tsuyuki Y, Kurita G, Kim JS, et al. Draft genome sequence of blood-origin *Pasteurella canis* strain PA42, isolated from a dog in Japan. Microbiol Resour Announc 2022;11:e0026022.
- Gautier AL, Dubois D, Escande F, Avril JL, Trieu-Cuot P, Gaillot O. Rapid and accurate identification of human isolates of *Pasteurella* and related species by sequencing the *sodA* gene. J Clin Microbiol 2005;43:2307-14.
- Albert TJ and Stevens DL. The first case of *Pasteurella canis* bacteremia: a cirrhotic patient with an open leg wound. Infection 2010;38:483-5.
- Kim B, Pai H, Lee KH, Lee Y. Identification of *Pasteurella canis* in a soft tissue infection caused by a dog bite: the first report in Korea. Ann Lab Med 2016;36:617-9.
- Shah A, Talati M, Mager T. Medical and surgical management of *Pasteurella canis* infectious keratitis. IDCases 2017;9:42-4.
- Bhat S, Acharya PR, Biranthabail D, Rangnekar A, Shiragavi S. A case of lower respiratory tract infection with canine-associated *Pasteurella canis* in a patient with chronic obstructive pulmonary disease. J Clin Diagn Res 2015;9:DD03-4.
- Hazleton BJ, Axt MW, Jones CA. *Pasteurella canis* osteoarticular infections in childhood: review of bone and joint infections due to *pasteurella* species over 10 years at a tertiary pediatric hospital and in the literature. J Pediatr Orthop 2013;33:e34-8.
- Hara H, Ochiai T, Morishima T, Arashima Y, Kumasaka K, Kawano KY. *Pasteurella canis* osteomyelitis and cutaneous abscess after a domestic dog bite. J Am Acad Dermatol 2002;46(S5):S151-2.
- Mensah-Glanowska P, Fornagiel S, Chrzan R, Ulatowska-Białas M, Piątkowska-Jakubas B. Of horses and zebras: a gastrointestinal infection with *Pasteurella canis* in a patient with acute myeloid leukemia. Pol Arch Intern Med 2020;130:335-7.
- Hannouille J, Belgrado JP, Vankerchove S, Vandermeeren L. Breast implant infection with *Pasteurella canis*: first case-report. JPRAS Open 2019;21:86-8.
- Castellano I, Marín JP, Gallego S, Mora M, Rangel G, Suarez MA, et al. *Pasteurella canis* peritonitis in a peritoneal dialysis patient. Perit Dial Int 2011;31:503-4.
- Talan DA, Citron DM, Abrahamian FM, Moran GJ, Goldstein EJ. Bacteriologic analysis of infected dog and cat bites. Emergency Medicine Animal Bite Infection Study Group. N Engl J Med 1999;340:85-92.
- Liu B, Zheng D, Jin Q, Chen L, Yang J. VFDB 2019: a comparative pathogenomic platform with an interactive web interface. Nucleic Acids Res 2019;47:D687-92.
- Liu B, Zheng D, Zhou S, Chen L, Yang J. VFDB 2022: a general classification scheme for bacterial virulence factors. Nucleic Acids Res 2022;50:D912-7.
- Takahashi T, Maeda T, Lee S, Lee DH, Kim S. Clonal distribution of clindamycin-resistant erythromycin-susceptible (CRES) *Streptococcus agalactiae* in Korea based on whole genome sequences. Ann Lab Med 2020;40:370-81.
- Shin H, Takahashi T, Lee S, Choi EH, Maeda T, Fukushima Y, et al. Comparing genomic characteristics of *Streptococcus pyogenes* associated with invasiveness over a 20-year period in Korea. Ann Lab Med 2022;42:438-46.
- Stackebrandt E and Ebers J. Taxonomic parameters revisited: tarnished gold standards. Microbiol Today 2006;33:152-5.
- Centers for Disease Control and Prevention. One Health. <https://www.cdc.gov/onehealth/index.html> (Updated on Oct 2022).
- Fukushima M, Hinenoya A, Asakura M, Nishimura K, Hasegawa T, Honda Y, et al. Cell toxic activity of cytolethal distending toxin (*cdt*) gene-posi-

- tive *Pasteurella canis* isolated from oral cavities of dogs. Abstract at the 59th Annual Meeting of the Japanese Society of Bacteriology, Kansai Branch in 2006 (in Japanese).
21. Johnson WM and Lior H. Production of Shiga toxin and a cytolethal distending toxin (CLDT) by serogroups of *Shigella* spp. FEMS Microbiol Lett 1987;48:235-8.
 22. Johnson WM and Lior H. A new heat-labile cytolethal distending toxin (CLDT) produced by *Campylobacter* spp. Microb Pathog 1988;4:115-26.
 23. Guerra L, Guidi R, Frisan T. Do bacterial genotoxins contribute to chronic inflammation, genomic instability and tumor progression? FEBS J 2011; 278:4577-88.
 24. Scott DA and Kaper JB. Cloning and sequencing of the genes encoding *Escherichia coli* cytolethal distending toxin. Infect Immun 1994;62:244-51.
 25. Elwell CA and Dreyfus LA. DNase I homologous residues in CdtB are critical for cytolethal distending toxin-mediated cell cycle arrest. Mol Microbiol 2000;37:952-63.
 26. Cortes-Bratti X, Chaves-Olarte E, Lagergård T, Thelestam M. Cellular internalization of cytolethal distending toxin from *Haemophilus ducreyi*. Infect Immun 2000;68:6903-11.
 27. Guidi R, Guerra L, Levi L, Stenerlöv B, Fox JG, Josenhans C, et al. Chronic exposure to the cytolethal distending toxins of Gram-negative bacteria promotes genomic instability and altered DNA damage response. Cell Microbiol 2013;15:98-113.
 28. Belibasakis GN, Maula T, Bao K, Lindholm M, Bostanci N, Oscarsson J, et al. Virulence and pathogenicity properties of *Aggregatibacter actinomycetemcomitans*. Pathogens 2019;8:222.
 29. Pons BJ, Loiseau N, Hashim S, Tadrist S, Mirey G, Vignard J. Functional study of *Haemophilus ducreyi* cytolethal distending toxin subunit B. Toxins 2020;12:530.
 30. Robb Huhn G 3rd, Torres-Mangual N, Clore J, Cilenti L, Frisan T, Teter K. Endocytosis of the CdtA subunit from the *Haemophilus ducreyi* cytolethal distending toxin. Cell Microbiol 2021;23:e13380.