

## Original Article



# Different Biological Pathways Are Up-regulated in the Elderly With Asthma: Sputum Transcriptomic Analysis

Byung-Keun Kim ,<sup>1</sup> Hyun-Seung Lee ,<sup>2,3</sup> Kyoung-Hee Sohn ,<sup>4</sup> Suh-young Lee,<sup>2,3</sup> Sang-Heon Cho ,<sup>2,3</sup> Heung-Woo Park <sup>2,3\*</sup>

<sup>1</sup>Department of Internal Medicine, Korea University Medical Center Anam Hospital, Seoul, Korea

<sup>2</sup>Department of Internal Medicine, Seoul National University College of Medicine, Seoul, Korea

<sup>3</sup>Institute of Allergy and Clinical Immunology, Seoul National University Medical Research Center, Seoul, Korea

<sup>4</sup>Department of Internal Medicine, KyungHee University Medical center, Seoul, Korea

## OPEN ACCESS

**Received:** Aug 27, 2018

**Revised:** Sep 11, 2018

**Accepted:** Sep 14, 2018

### Correspondence to

Heung-Woo Park, MD, PhD

Department of Internal Medicine, Seoul National University College of Medicine, Seoul, Republic of Korea.

Tel: +82-2-2072-0699

Fax: +82-2-742-3291

E-mail: guinea71@snu.ac.kr

**Copyright** © 2019 The Korean Academy of Asthma, Allergy and Clinical Immunology · The Korean Academy of Pediatric Allergy and Respiratory Disease

This is an Open Access article distributed under the terms of the Creative Commons Attribution Non-Commercial License (<https://creativecommons.org/licenses/by-nc/4.0/>) which permits unrestricted non-commercial use, distribution, and reproduction in any medium, provided the original work is properly cited.

### ORCID iDs

Byung-Keun Kim

<https://orcid.org/0000-0001-5147-6306>

Hyun-Seung Lee

<https://orcid.org/0000-0002-4599-8527>

Kyoung-Hee Sohn

<https://orcid.org/0000-0001-8407-8080>

Sang-Heon Cho

<https://orcid.org/0000-0002-7644-6469>

Heung-Woo Park

<https://orcid.org/0000-0002-6970-3228>

## ABSTRACT

**Background:** Elderly asthma (EA) is increasing, but the pathogenesis is unclear. This study aimed to identify EA-related biological pathways by analyzing genome-wide gene expression profiles in sputum cells.

**Methods:** A total of 3,156 gene probes with significantly differential expressions between EA and healthy elderly controls were used for a hierarchical clustering of genes to identify gene clusters. Gene set enrichment analysis provided biological information, with replication from Gene Expression Omnibus expression profiles.

**Results:** Fifty-five EA patients and 10 elderly control subjects were enrolled. Two distinct gene clusters were found. Cluster 1 (n = 35) showed a lower eosinophil proportion in sputum and less severe airway obstruction compared to cluster 2 (n = 20). The replication data set also identified 2 gene clusters (clusters 1' and 2'). Among 5 gene sets significantly enriched in cluster 1 and 3 gene sets significantly enriched in cluster 2, we confirmed that 2 were significantly enriched in the replication data set (OXIDATIVE\_PHOSPHORYLATION gene set in cluster 1 and EPITHELIAL MESENCHYMAL TRANSITION gene set in cluster 2').

**Conclusions:** The findings of 2 distinct gene clusters in EA and different biological pathways in each gene cluster suggest 2 different pathogenesis mechanisms underlying EA.

**Keywords:** Asthma; Cluster analysis; Elderly; Gene expression

## INTRODUCTION

Global society is aging.<sup>1</sup> Accordingly, elderly asthma (EA) involving asthma in people aged 65 years and over is expected to increase. The estimated prevalence of EA in developed countries is 6%-10%.<sup>2</sup> Previous reports suggest that EA is phenotypically different from non-elderly asthma (NEA).<sup>3-5</sup> However, the pathogenesis underlying EA has not been clearly elucidated.

Induced sputum is a reliable non-invasive assessment of bronchial inflammation in asthma.<sup>6</sup> The evaluation of gene expression profiles of sputum cells has been successfully applied to understand asthma pathogenesis.<sup>7,8</sup> The present study searched biological pathways related to EA using genome-wide gene expression profiles of sputum cells from EA. We selected genes showing

**Disclosure**

There are no financial or other issues that might lead to conflict of interest.

significantly differential expressions between EA and healthy elderly controls and identified 2 distinct clusters by hierarchical clustering of these genes. We performed gene set enrichment analysis (GSEA) to gain further biological insights of each cluster. Finally, we confirmed that our findings were replicated in a dependent gene expression profile of sputum cells obtained from Gene Expression Omnibus (GEO), a publicly available database of gene expression profiles. To the best of our knowledge, this is the first study to identify peculiar biological pathways contributing to the EA pathogenesis based on sputum gene expression profiles.

## MATERIALS AND METHODS

### Discovery data set

Participants aged 65 years or older were recruited from the Seoul National University Hospital (Seoul, Korea). Asthma was diagnosed according to the Global Initiative for Asthma guideline on the basis of current (past 12 months) episodic respiratory symptoms and demonstrated evidence of airway hyperresponsiveness to methacholine or positive bronchodilator (BD) response.<sup>9</sup> Healthy elderly controls without asthma ( $n = 10$ ) were recruited by advertisement. None of them had respiratory symptoms, sputum eosinophilia, abnormality on chest radiography and obstructive pulmonary function test results. Three of them were smokers (1 current smoker and 2 ex-smokers). Exclusion criteria included recent (past month) respiratory tract infection, change in maintenance therapy and asthma exacerbation. However, to reflect real situations, a smoking status was not considered an exclusion criteria. Sputum induction and processing were performed as previously described.<sup>10</sup>

### Gene expression arrays

RNA was extracted from induced sputum samples by using the RNeasy Mini Kit (Qiagen, Hilden, Germany). Gene expression levels were measured using the GeneChip Human Gene 2.0 ST (Affymetrix, Santa Clara, CA, USA). We removed probes with bad chromosome annotation and probes in X or Y chromosome. We then did variance stabilizing transformation and quantile normalization, respectively, to reduce the effects of technical noises and to make the distribution of expression level for each array closer to a normal distribution.

### Statistical analysis

A total of 3,156 gene probes showing significantly different expressions between EA and healthy elderly controls ( $P < 0.05$ ) were used to further analysis. To search for meaningful information patterns and dependencies in gene expression data, we performed hierarchical clustering using the pvclust package in R version 3.4.3 ([www.r-project.org](http://www.r-project.org); R Foundation for Statistical Computing, Vienna, Austria). This package provides an approximately unbiased  $P$  value generated by multi-scale bootstrap resampling. The  $P$  value indicates how strong the cluster is supported by the data.<sup>11</sup> An approximately unbiased  $P$  value greater than 95% was used to define a cluster. We next performed GSEA using the GSEA software (version 3.0) provided by the Broad Institute (Boston, MA, USA).<sup>12</sup> We used the hallmark gene sets (H collection) from the Molecular Signatures Database (MSigDB, version 6.0) and defined a significantly enriched gene set when a false discovery rate threshold was less than 0.05.

### Ethics approval

This study was approved by the Seoul National University Hospital Review Board (1608-101-786), and informed consent was obtained from all study participants.

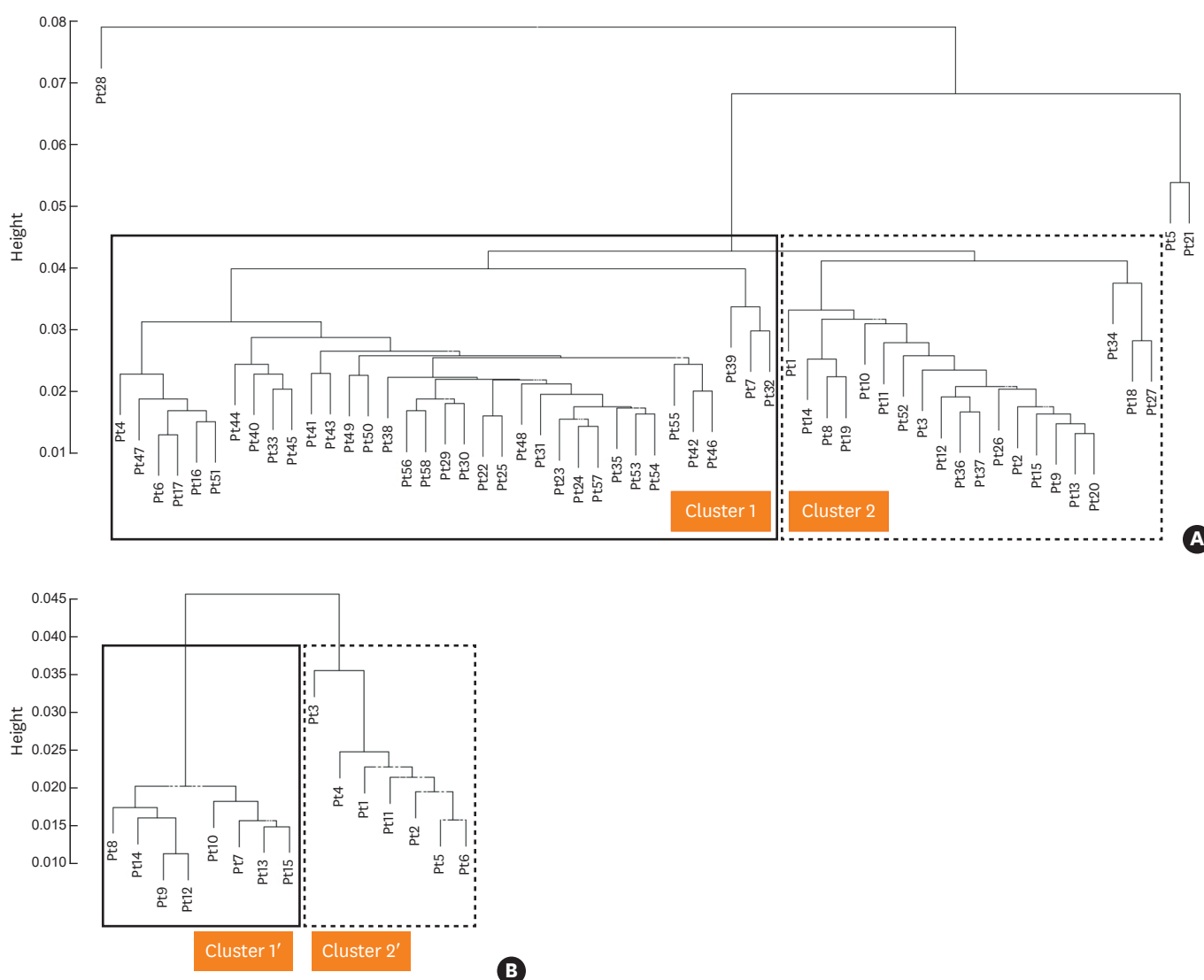
### Replication data set

A dependent gene expression profile of sputum cells (GSE41863) obtained from GEO (<https://www.ncbi.nlm.nih.gov/geo/query/acc.cgi?acc=GSE41863>) was used to replicate our results. To identify markers associated with various asthma subtypes, sputum samples were collected from asthmatics and healthy controls and were subjected to expression profiling using Affymetrix HG-U133Plus2.0. From this profile, we selected 20 subjects aged 65 years or older (15 asthmatics and 5 healthy controls) and identified 3,264 gene probes showing significantly ( $P < 0.05$ ) different expressions. Hierarchical clustering and GSEA were performed using these gene probes.

## RESULTS

Fifty-five patients with EA were enrolled. Based on the differential gene expression patterns of sputum cells, 2 distinct clusters were identified (**Fig. 1A** and **Supplementary Fig. S1**). Cluster 1 consisted of 35 patients with EA. Cluster 1 featured a significantly lower proportion of eosinophils in the sputum and less severe airway obstruction as measured by the post-BD ratio of the forced expiratory volume in 1 second and forced vital capacity (FEV1/FVC) compared to cluster 2. Detailed characteristics of the 2 clusters are provided in **Table 1**.

GSEA results (**Table 2A** and **Fig. 2**) revealed the significant enrichment of 5 gene sets in cluster 1 (OXIDATIVE\_PHOSPHORYLATION [OXPHOS], UNFOLDED\_PROTEIN\_RESPONSE [UPR], MYC\_TARGETS\_V1, DNA\_REPAIR, and ADIPOGENESIS) and 3 gene sets in cluster 2 (EPITHELIAL\_MESENCHYMAL\_TRANSITION [EMT], MYOGENESIS, and KRAS\_SIGNALING\_DN). In the replication analysis, hierarchical clustering of gene expression patterns also revealed 2 clusters (cluster 1' with 8 EA patients and cluster 2' with 7 EA patients, **Fig. 1B**). Clinical characteristics of each cluster are shown in **Supplementary Table S1**. GSEA identified 8 gene sets (OXPHOS, ESTROGEN\_RESPONSE\_EARLY, E2F\_TARGETS, MYC\_TARGETS\_V1, FATTY\_ACID\_METABOLISM, MYC\_TARGETS\_V2, ESTROGEN\_RESPONSE\_LATE, and DNA\_REPAIR) were significantly enriched in cluster 1' and 3 gene sets (TNFA\_SIGNALING\_VIA\_NFKB, INFLAMMATORY\_RESPONSE, and EMT) in cluster 2' (**Table 2B** and **Supplementary Fig. S2**). The OXPHOS gene set was significantly enriched in clusters 1 and 1' and the EMT gene set in both clusters 2 and 2'. To assess the potential functional relevance of the replicated gene sets, the leading edge genes of gene sets enriched in both discovery and replication datasets (**Supplementary Table S2**) were summarized into a single metagene metric using a principal component (PC) analysis. Then, the correlations between PC1, and serum uric acid levels and post-BD FEV1/FVC values were measured in each cluster. Circulating uric acid is a major antioxidant that might help protect against oxidative stress.<sup>13</sup> The post-BD FEV1/FVC value is an indirect indicator of airway remodeling.<sup>14</sup> Levels of serum uric acid were lower in cluster 1 with a borderline significance ( $P = 0.083$ ) compared to cluster 2, whereas post-BD FEV1/FVC values were significantly higher in cluster 1 ( $P = 0.008$ ) (**Supplementary Fig. S3**). PC1 of leading edge genes in the OXPHOS gene set showed a negative correlation with serum uric acid levels ( $P = 0.075$ ) only in cluster 1 (**Fig. 3**). Meanwhile, PC1 of leading edge genes in the EMT gene set showed a significantly negative correlation with post-BD FEV1/FVC values ( $P = 0.005$ ) only in cluster 2 (**Fig. 3**). For individual gene, we found 4 genes (*MRPS11*, *HSPA9*, *NDUFB4*, and *ACAT1*) in the leading edge genes of the OXPHOS gene set and 2 genes (*SNTB1* and *FUCA1*) in leading edge genes of the EMT gene set belonged to genes which showed more than 1.5 log 2-fold expression difference between clusters 1 and 2 with  $P$  values less than 0.01 (**Fig. 4**).



**Fig. 1.** Two gene clusters identified in the discovery and replication dataset. (A) Discovery dataset. Three outliers (Pt5, Pt21, and Pt28) were excluded from analysis. (B) Replication dataset. Pt, Patient.

## DISCUSSION

Using gene expression profiles on sputum cells, we could identify 2 molecular clusters. Cluster 1 showed a significantly lower proportion of eosinophils in sputum and less severe airway obstruction compared to cluster 2. GSEA revealed that different biologic pathways were enriched in each cluster, implying that peculiar and discriminative pathogenesis mechanisms might exist. In replication analysis, we also identified 2 distinct molecular clusters. In addition, similar to the discovery dataset, the OXPHOS gene set was significantly enriched in one cluster and the EMT gene set was significantly enriched in the other cluster.

Approximately 70% of EA enrolled in the present study displayed symptom onset after 65 years old and the mean symptom duration was 5 years. These findings suggest that EA is not merely a prolongation of NEA but rather that aging itself may pose susceptibility to

**Table 1.** Baseline characteristics (discovery dataset)

Characteristics	Cluster 1 (n = 35)	Cluster 2 (n = 20)	P value
Male, No. (%)	16 (45.7)	9 (45)	0.959
Age (yr)	72.6 (5.4)	75.1 (5.4)	0.103
BMI (kg/m <sup>2</sup> )	24.9 (3.7)	26.4 (4.1)	0.205
Smoking status			0.841
Current smoker, No. (%)	4 (11.4)	2 (10)	
Ex-smoker, No. (%)	12 (34.3)	8 (40)	
Never-smoker, No. (%)	19 (54.3)	10 (50)	
Age of symptom onset (yr)	67.6 (6.8)	69.1 (6.9)	0.430
Age of symptom onset < 65 yr, No. (%)	11 (31.4)	6 (30)	0.912
Symptom duration (yr)	4.9 (6.0)	5.9 (4.7)	0.524
Chronic rhinosinusitis, No. (%)	18 (51.7)	8 (40)	0.514
Atopy, No. (%)	4 (44.4)	2 (22.2%)	0.620
Sputum eosinophil (%)	2.8 (4.3)	5.9 (8.2)	0.033
Sputum neutrophil (%)	35.9 (14.3)	37.9 (14.8)	0.580
Serum uric acid (mg/L)	5.2 (1.2)	6.1 (2.3)	0.083
Peripheral eosinophil count	209.6 (192.3)	197.2 (193.7)	0.819
Serum total IgE	91.0 (143.1)	130.0 (226.7)	0.616
Post-BD FVC (L)	2.75 (0.80)	2.74 (0.93)	0.974
Post-BD FVC (% pred.)	96.4 (16.0)	104.8 (15.8)	0.068
Post-BD FEV1 (L)	1.80 (0.44)	1.51 (0.37)	0.011
Post-BD FEV1 (% pred.)	91.0 (18.7)	82.0 (15.9)	0.065
Post-BD FEV1/FVC (%)	66.3 (11.8)	56.3 (13.0)	0.007

Data were presented as mean ± standard deviation except those indicated otherwise.

BD, bronchodilator; BMI, body mass index; FEV1, forced expiratory volume in 1 second; FVC, forced vital capacity.

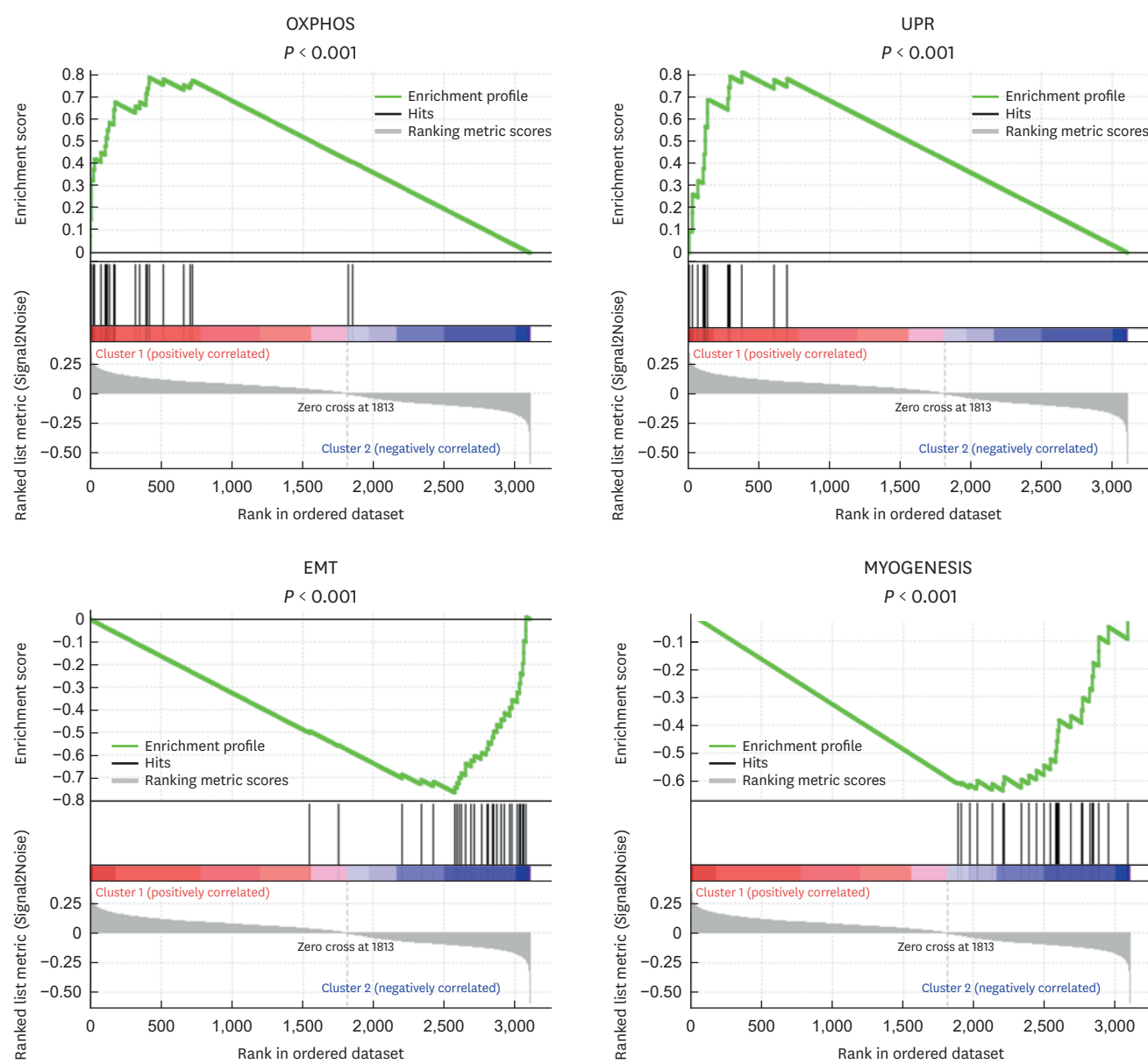
**Table 2.** Gene sets enriched significantly in each cluster

Gene set name	No. of overlapped genes	Normalized enrichment score	FDR P value
Discovery dataset			
Cluster 1			
OXPHOS	28	2.99	<0.001
UPR	16	2.55	<0.001
MYC_TARGETS_V1	22	1.83	0.027
DNA_REPAIR	15	1.81	0.025
ADIPOGENESIS	31	1.80	0.021
Cluster 2			
EMT	31	-3.29	<0.001
MYOGENESIS	27	-2.67	<0.001
KRAS_SIGNALING_DN	29	-1.81	0.24
Replication dataset			
Cluster 1'			
OXPHOS	85	1.96	0.005
ESTROGEN_RESPONSE_EARLY	24	1.89	0.005
E2F_TARGETS	37	1.75	0.019
MYC_TARGETS_V1	67	1.65	0.048
FATTY_ACID_METABOLISM	38	1.64	0.041
MYC_TARGETS_V2	28	1.64	0.034
ESTROGEN_RESPONSE_LATE	26	1.64	0.031
DNA_REPAIR	39	1.61	0.038
Cluster 2'			
TNFA_SIGNALING_VIA_NFKB	27	-2.59	<0.001
INFLAMMATORY_RESPONSE	36	-2.05	0.002
EMT	28	-1.74	0.019

Data are shown as number (%).

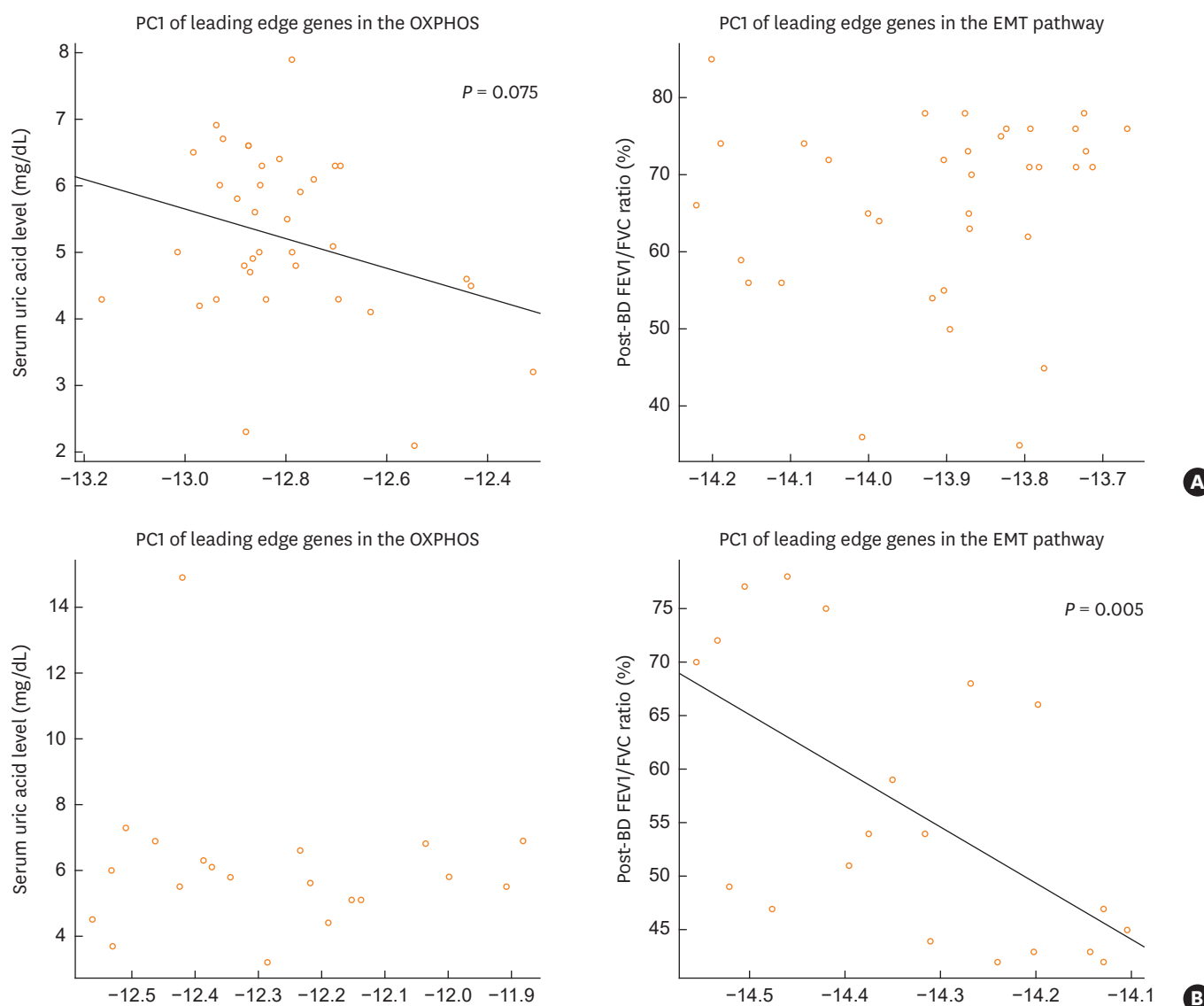
FDR, false discovery rate; OXPHOS, OXIDATIVE\_PHOSPHORYLATION; UPR, UNFOLDED\_PROTEIN\_RESPONSE; EMT, EPITHELIAL\_MESENCHYMAL\_TRANSITION.

the development of asthma, as discussed elsewhere.<sup>15</sup> In addition to anatomical changes, repetitive and long-standing exposures to environmental noxious stimuli cause the pro-inflammatory state in elderly subjects which results in aging-associated diseases in



**Fig. 2.** Gene sets enriched in each cluster identified in the discovery dataset with FDR  $P$  values less than 0.001. (A) Cluster 1, (B) Cluster 2. FDR, false discovery rate; OXPHOS, OXIDATIVE\_PHOSPHORYLATION; UPR, UNFOLDED\_PROTEIN\_RESPONSE, EMT, EPITHELIAL\_MESENCHYMAL\_TRANSITION.

combination with oxidative stress.<sup>16,17</sup> The OXPHOS system embedded in mitochondria is the final biochemical pathway to produce adenosine triphosphate. A defect in the coupling between oxidation and phosphorylation causes various pathologic conditions including airway disorders.<sup>18-20</sup> At least 70 of the OXPHOS subunits are encoded by the nuclear genes whose expressions were measured in the present study and some defects of these genes were related with many diseases.<sup>21</sup> The OXPHOS system is an important source of reactive oxygen species (ROS) within cells. ROS production contributes to mitochondrial damage in a range of pathologies and is also important in redox from the organelle to the rest of the cell.<sup>22,23</sup> Oxidative stress has also been linked to endoplasmic reticulum (ER) stress and to the activation of the UPR, leading to the activation of different inflammatory responses and dysregulation of the innate immune functions in the airways.<sup>24,25</sup> These prior observations



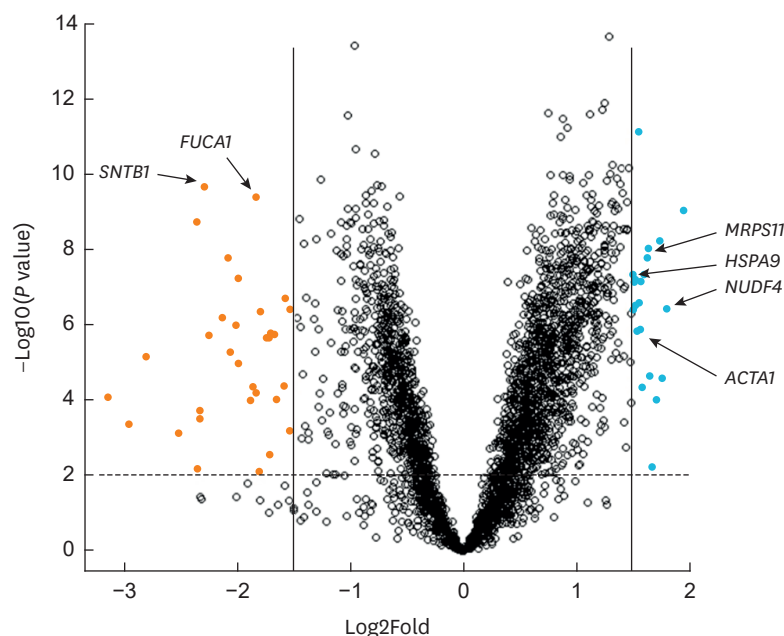
**Fig. 3.** Association between clinical variables and PC1 of the leading edge genes from gene sets enriched in both discovery and replication datasets. (A) Cluster 1, (B) Cluster 2.

Figures without  $P$  values denote statistically insignificant associations.

PC, principal component; OXPHOS, OXIDATIVE\_PHOSPHORYLATION; EMT, EPITHELIAL\_MESENCHYMAL\_TRANSITION.

match well with our findings that both the OXPHOS and UPR gene sets were significantly enriched in cluster 1. Given that previous suggestions that the OXPHOS and UPR systems have specific roles in the pathogenesis of asthma,<sup>25,26</sup> age-related changes in the OXPHOS and UPR systems may influence the development of asthma in the elderly. A decrease in serum uric acid levels in cluster 1 was also an interesting finding. As anti-oxidants may scavenge ROS, an imbalance between ROS and anti-oxidant capacity must be one of the important factors determining the effect of oxidative stress. Currently, it is not clear that patients with EA in cluster 1 have an intrinsic defect in anti-oxidant capacity. However, combined with changes in the OXPHOS and UPR systems, reduced anti-oxidant capacity may contribute to the pathogenesis of asthma in the elderly.





**Fig. 4.** Volcano plot displaying differential expressed genes. The 4 genes (*MRPS11*, *HSPA9*, *NUDF4*, and *ACTA1*) belong to the leading edge genes of the OXPHOS gene set and 2 genes (*SNTB1* and *FUCA1*) belong to the leading edge genes of the EMT gene set.  
OXPHOS, OXIDATIVE\_PHOSPHORYLATION; EMT, EPITHELIAL\_MESENCHYMAL\_TRANSITION.

Cluster 2 as characterized by the enrichment of EMT gene sets. EMT describes a situation that epithelial and mesenchymal cells can, under certain conditions, switch their phenotypes<sup>27</sup> and emerging evidence suggests that EMT is an important mechanism contributing to airway remodeling in asthma,<sup>28</sup> which can explain lower post-BD FEV1 and post-BD FEV1/FVC ratios in cluster 2 compared to those in cluster 1. Senescent cells secrete a variety of proteins collectively known as the senescence-associated secretory phenotype (SASP), which can induce cellular plasticity and tissue change in a paracrine manner.<sup>29</sup> Recently, it has been reported that SASP might play a causal role in the pathogenesis of chronic obstructive pulmonary disease.<sup>30,31</sup> The role of SASP in the pathogenesis of asthma in the elderly has been totally unknown. However, cellular senescence is believed to contribute to cancer progression via EMT.<sup>32,33</sup> Cellular senescence observed in the airway may induce EMT and increase the severity of asthma in the elderly.

Interestingly, we did not find any specific pathway directly related with eosinophil biology, although a significantly higher sputum eosinophil proportion was observed in cluster 2. However, given that a previous report showed that eosinophil promoted EMT of bronchial epithelial cells,<sup>34</sup> airway eosinophilia might be complicated in the pathogenesis underlying cluster 2.

We aimed to identify biological pathways explaining a whole feature of EA, and thus we did not consider asthma-COPD overlap (ACO) as a subtype of EA in this study. If we define ACO as 1) post-BD FEV1/FVC < 0.7 and 2) classic symptoms of chronic bronchitis or suggesting signs of emphysema with chest radiography or pulmonary function test,<sup>35</sup> the proportion of ACO is higher in cluster 2 (28.6% vs 55.5%). Although the difference showed a borderline significance ( $P = 0.083$ ), the present study raised new insight in understanding ACO in the elderly. As is known, ACO is a common clinical problem in the elderly.<sup>36</sup> Therefore, large scale studies to exam possible associations between biological pathways enriched in cluster 2 and ACO are necessary.



There are a few limitations to generalize our findings. One is the small number of participants. However, our results were replicated in an independent data set. This was a cross-sectional study, and thus we cannot know whether that the pathways identified were the primary cause or the secondary effect of asthma. Secondly, we used the uric acid level as an indirect biomarker to reflect oxidative stress status as it was easily available from routine laboratory examinations. Additional biomarkers need to be measure to confirm our observations. Finally, studies to elucidate mechanisms need to be followed.

Among leading genes identified in this study, *NUDFB4* and *FUCA1* are of special interest. *NUDFB4* is a subunit of NADH dehydrogenase and its expression increases in smoking associated severe asthmatics.<sup>37,38</sup> Similar to the present study, it has been reported that a considerable portion of elderly asthmatics were former or current smokers.<sup>4,5</sup> *FUCA1* codes  $\alpha$ -L-fucosidase that can block wound repair of primary airway epithelium.<sup>39</sup> As well known, a delay in airway epithelial damage is associated with airway remodeling.<sup>40</sup>

In this study, we identified 2 distinct molecular clusters using gene expression profiles in sputum cells from patients with EA. The OXOPHOS and UPR gene sets were significantly enriched in one cluster with lower serum levels of uric acid. The EMT gene sets were significantly enriched in one cluster with airway remodeling defined by lower post-BD FEV/FVC ratios. This is the first study to show biologic pathways possibly related to EA pathogenesis. We postulate that oxidative stress and cellular senescence-associated with aging may be important in the development or progress of EA.

## ACKNOWLEDGMENTS

This research was supported by a fund (code: 2016-ER6702-00) by Research of Korea Centers for Disease Control and Prevention, Korea University Anam Hospital, Seoul, Republic of Korea (Grant No. O1700381).

## SUPPLEMENTARY MATERIALS

### Supplementary Table S1

Clinical characteristics of replication data set

[Click here to view](#)

### Supplementary Table S2

Leading edge genes of gene sets enriched in both discovery and replication datasets

[Click here to view](#)

### Supplementary Fig. S1

Heat map of 2 gene clusters identified in the discovery dataset.

[Click here to view](#)

**Supplementary Fig. S2**

Gene sets enriched in each cluster identified in the replication dataset with FDR *P* values less than 0.001. Only 2 gene sets were presented which were also significantly enriched in the discovery dataset.

[Click here to view](#)

**Supplementary Fig. S3**

Differences of serum uric acid levels and post-BD FEV1/FVC values between cluster 1 and cluster 2 in the discovery dataset.

[Click here to view](#)

**REFERENCES**

1. He W, Goodkind D, Kowal P. An aging world: 2015 [Internet]. Suitland (MD): United States Census Bureau; 2016 [cited 2018 Aug 15]. Available from: <https://www.census.gov/content/dam/Census/library/publications/2016/demo/p95-16-1.pdf>.
2. Gibson PG, McDonald VM, Marks GB. Asthma in older adults. *Lancet* 2010;376:803-13.  
[PUBMED](#) | [CROSSREF](#)
3. Park HW, Kwon HS, Kim TB, Kim SH, Chang YS, Jang AS, et al. Differences between asthma in young and elderly: results from the COREA study. *Respir Med* 2013;107:1509-14.  
[PUBMED](#) | [CROSSREF](#)
4. Sano H, Iwanaga T, Nishiyama O, Sano A, Higashimoto Y, Tomita K, et al. Characteristics of phenotypes of elderly patients with asthma. *Allergol Int* 2016;65:204-9.  
[PUBMED](#) | [CROSSREF](#)
5. Inoue H, Niimi A, Takeda T, Matsumoto H, Ito I, Matsuoka H, et al. Pathophysiological characteristics of asthma in the elderly: a comprehensive study. *Ann Allergy Asthma Immunol* 2014;113:527-33.  
[PUBMED](#) | [CROSSREF](#)
6. Nicholas B, Djukanović R. Induced sputum: a window to lung pathology. *Biochem Soc Trans* 2009;37:868-72.  
[PUBMED](#) | [CROSSREF](#)
7. Baines KJ, Simpson JL, Wood LG, Scott RJ, Gibson PG. Transcriptional phenotypes of asthma defined by gene expression profiling of induced sputum samples. *J Allergy Clin Immunol* 2011;127:153-60, 160.e1-60.e9.
8. Hekking PP, Loza MJ, Pavlidis S, De Meulder B, Lefaudeux D, Baribaud F, et al. Transcriptomic gene signatures associated with persistent airflow limitation in patients with severe asthma. *Eur Respir J* 2017;50:1602298.  
[PUBMED](#) | [CROSSREF](#)
9. Global Initiative for Asthma (GINA). Global strategy for asthma management and prevention [Internet]. Walworth (WI): Global Initiative for Asthma; 2018 [cited 2018 Aug 15]. Available from: <https://www.ginasthma.org>.
10. Sohn SW, Lee HS, Park HW, Chang YS, Kim YK, Cho SH, et al. Evaluation of cytokine mRNA in induced sputum from patients with allergic rhinitis: relationship to airway hyperresponsiveness. *Allergy* 2008;63:268-73.  
[PUBMED](#) | [CROSSREF](#)
11. Suzuki R, Shimodaira H. Pvcust: an R package for assessing the uncertainty in hierarchical clustering. *Bioinformatics* 2006;22:1540-2.  
[PUBMED](#) | [CROSSREF](#)
12. Subramanian A, Tamayo P, Mootha VK, Mukherjee S, Ebert BL, Gillette MA, et al. Gene set enrichment analysis: a knowledge-based approach for interpreting genome-wide expression profiles. *Proc Natl Acad Sci U S A* 2005;102:15545-50.  
[PUBMED](#) | [CROSSREF](#)
13. Fabbrini E, Serafini M, Colic Baric I, Hazen SL, Klein S. Effect of plasma uric acid on antioxidant capacity, oxidative stress, and insulin sensitivity in obese subjects. *Diabetes* 2014;63:976-81.  
[PUBMED](#) | [CROSSREF](#)

14. Rasmussen F, Taylor DR, Flannery EM, Cowan JO, Greene JM, Herbison GP, et al. Risk factors for airway remodeling in asthma manifested by a low postbronchodilator FEV1/vital capacity ratio: a longitudinal population study from childhood to adulthood. *Am J Respir Crit Care Med* 2002;165:1480-8.  
[PUBMED](#) | [CROSSREF](#)
15. Dunn RM, Busse PJ, Wechsler ME. Asthma in the elderly and late-onset adult asthma. *Allergy* 2018;73:284-94.  
[PUBMED](#) | [CROSSREF](#)
16. De la Fuente M, Miquel J. An update of the oxidation-inflammation theory of aging: the involvement of the immune system in oxi-inflamm-aging. *Curr Pharm Des* 2009;15:3003-26.  
[PUBMED](#) | [CROSSREF](#)
17. Bullone M, Lavoie JP. The contribution of oxidative stress and inflamm-aging in human and equine asthma. *Int J Mol Sci* 2017;18:E2612.  
[PUBMED](#) | [CROSSREF](#)
18. DiMauro S, Bonilla E, Davidson M, Hirano M, Schon EA. Mitochondria in neuromuscular disorders. *Biochim Biophys Acta* 1998;1366:199-210.  
[CROSSREF](#)
19. Shoubridge EA. Mitochondrial encephalomyopathies. *Curr Opin Neurol* 1998;11:491-6.  
[PUBMED](#) | [CROSSREF](#)
20. Prakash YS, Pabelick CM, Sieck GC. Mitochondrial dysfunction in airway disease. *Chest* 2017;152:618-26.  
[PUBMED](#) | [CROSSREF](#)
21. Smeitink J, van den Heuvel L, DiMauro S. The genetics and pathology of oxidative phosphorylation. *Nat Rev Genet* 2001;2:342-52.  
[PUBMED](#) | [CROSSREF](#)
22. Balaban RS, Nemoto S, Finkel T. Mitochondria, oxidants, and aging. *Cell* 2005;120:483-95.  
[PUBMED](#) | [CROSSREF](#)
23. Dröge W. Free radicals in the physiological control of cell function. *Physiol Rev* 2002;82:47-95.  
[PUBMED](#) | [CROSSREF](#)
24. Malhotra JD, Kaufman RJ. Endoplasmic reticulum stress and oxidative stress: a vicious cycle or a double-edged sword? *Antioxid Redox Signal* 2007;9:2277-93.  
[PUBMED](#) | [CROSSREF](#)
25. Pathinayake PS, Hsu AC, Waters DW, Hansbro PM, Wood LG, Wark PA. Understanding the unfolded protein response in the pathogenesis of asthma. *Front Immunol* 2018;9:175.  
[PUBMED](#) | [CROSSREF](#)
26. Reddy PH. Mitochondrial dysfunction and oxidative stress in asthma: implications for mitochondria-targeted antioxidant therapeutics. *Pharmaceuticals (Basel)* 2011;4:429-56.  
[PUBMED](#) | [CROSSREF](#)
27. Micalizzi DS, Farabaugh SM, Ford HL. Epithelial-mesenchymal transition in cancer: parallels between normal development and tumor progression. *J Mammary Gland Biol Neoplasia* 2010;15:117-34.  
[PUBMED](#) | [CROSSREF](#)
28. Hackett TL. Epithelial-mesenchymal transition in the pathophysiology of airway remodelling in asthma. *Curr Opin Allergy Clin Immunol* 2012;12:53-9.  
[PUBMED](#) | [CROSSREF](#)
29. Ritschka B, Storer M, Mas A, Heinzmann F, Ortells MC, Morton JP, et al. The senescence-associated secretory phenotype induces cellular plasticity and tissue regeneration. *Genes Dev* 2017;31:172-83.  
[PUBMED](#) | [CROSSREF](#)
30. Dagouassat M, Gagliolo JM, Chrusciel S, Bourin MC, Duprez C, Caramelle P, et al. The cyclooxygenase-2-prostaglandin E2 pathway maintains senescence of chronic obstructive pulmonary disease fibroblasts. *Am J Respir Crit Care Med* 2013;187:703-14.  
[PUBMED](#) | [CROSSREF](#)
31. Houssaini A, Breau M, Kebe K, Abid S, Marcos E, Lipskaia L, et al. mTOR pathway activation drives lung cell senescence and emphysema. *JCI Insight* 2018;3:93203.
32. Smit MA, Peeper DS. Epithelial-mesenchymal transition and senescence: two cancer-related processes are crossing paths. *Aging (Albany NY)* 2010;2:735-41.  
[PUBMED](#) | [CROSSREF](#)
33. Laberge RM, Awad P, Campisi J, Desprez PY. Epithelial-mesenchymal transition induced by senescent fibroblasts. *Cancer Microenviron* 2012;5:39-44.  
[PUBMED](#) | [CROSSREF](#)

34. Yasukawa A, Hosoki K, Toda M, Miyake Y, Matsushima Y, Matsumoto T, et al. Eosinophils promote epithelial to mesenchymal transition of bronchial epithelial cells. *PLoS One* 2013;8:e64281.  
[PUBMED](#) | [CROSSREF](#)
35. Lee H, Tho NV, Nakano Y, Lee BJ, Park HY. A diagnostic approach and natural course of a patient with asthma-COPD overlap syndrome. *Respirol Case Rep* 2015;3:119-21.  
[PUBMED](#) | [CROSSREF](#)
36. Zeki AA, Schivo M, Chan A, Albertson TE, Louie S. The asthma-COPD overlap syndrome: a common clinical problem in the elderly. *J Allergy (Cairo)* 2011;2011:861926.  
[PUBMED](#) | [CROSSREF](#)
37. Bigler J, Boedigheimer M, Schofield JP, Skipp PJ, Corfield J, Rowe A, et al. A severe asthma disease signature from gene expression profiling of peripheral blood from U-BIOPRED cohorts. *Am J Respir Crit Care Med* 2017;195:1311-20.  
[PUBMED](#) | [CROSSREF](#)
38. Takahashi K, Pavlidis S, Ng Kee Kwong F, Hoda U, Rossios C, Sun K, et al. Sputum proteomics and airway cell transcripts of current and ex-smokers with severe asthma in U-BIOPRED: an exploratory analysis. *Eur Respir J* 2018;51:1702173.  
[PUBMED](#) | [CROSSREF](#)
39. Dorscheid DR, Wojcik KR, Yule K, White SR. Role of cell surface glycosylation in mediating repair of human airway epithelial cell monolayers. *Am J Physiol Lung Cell Mol Physiol* 2001;281:L982-92.  
[PUBMED](#) | [CROSSREF](#)
40. Holgate ST, Davies DE, Puddicombe S, Richter A, Lackie P, Lordan J, et al. Mechanisms of airway epithelial damage: epithelial-mesenchymal interactions in the pathogenesis of asthma. *Eur Respir J Suppl* 2003;44:24s-29s.  
[PUBMED](#) | [CROSSREF](#)