

Plasma Neutrophil Gelatinase-associated Lipocalin and Leukocyte Differential Count in Children with Febrile Urinary Tract Infection

Min Hwa Son, M.D.
Hyung Eun Yim, M.D., Ph.D.
Kee Hwan Yoo, M.D., Ph.D.

Department of Pediatrics, Korea
University College of Medicine, Seoul,
Korea

Corresponding author:

Hyung Eun Yim, MD, PhD
Address: Department of Pediatrics,
Korea University Ansan Hospital, Korea
University College of Medicine, 123
Jeokgeum-ro, Danwon-gu, Ansan 15355,
Republic of Korea
Tel: +82-31-412-5096
Fax: +82-31-405-8591
E-mail: he-yim@hanmail.net

Received: 3 September 2021
Revised: 18 October 2021
Accepted: 16 November 2021

Purpose: We aimed to study the association of plasma neutrophil gelatinase-associated lipocalin (pNGAL) and leukocyte differential count in children with febrile urinary tract infection (UTI).

Methods: Medical records of 154 children aged 1 month to 13 years with febrile UTI who were hospitalized were retrospectively reviewed. Associations between pNGAL levels and blood leukocyte differential count at admission and after 48 hours of treatment were investigated in children with or without acute pyelonephritis (APN).

Results: The APN group (n=82) showed higher pNGAL levels, neutrophil count, monocyte count, and neutrophil-to-lymphocyte ratio (NLR), compared to the non-APN group (n=72) (all $P<0.05$). After adjustment for age and sex, pNGAL showed positive correlations with neutrophil count and NLR in both groups (all $P<0.05$). Additionally, it was correlated with the monocyte-to-lymphocyte ratio (MLR) only in the APN group ($P<0.05$). Before and after treatment, pNGAL was positively correlated with neutrophil count, NLR, and MLR in patients with APN while it was related with neutrophil count and NLR in those without APN (all $P<0.05$). Areas under the receiver operating curve of pNGAL, neutrophil count, NLR, and MLR for predicting APN were 0.804, 0.760, 0.730, and 0.636, respectively (all $P<0.05$). Only pNGAL was independently associated with the presence of APN in a multivariable logistic regression analysis ($P<0.05$).

Conclusion: In children with febrile UTIs, pNGAL might be associated with leukocyte differential count and the presence of APN.

Key words: Biomarkers, Lipocalin-2, Pyelonephritis

This is an open-access article distributed under the terms of the Creative Commons Attribution Non-Commercial License (<http://creativecommons.org/licenses/by-nc/4.0/>) which permits unrestricted non-commercial use, distribution, and reproduction in any medium, provided the original work is properly cited.

Copyright © 2021 The Korean Society of
Pediatric Nephrology

Introduction

Urinary tract infection (UTI) is one of the most common diseases in the first year of life after birth in both male and female infants¹⁾. Delayed diagnosis and treatment of UTI can increase the risk of sepsis in newborns²⁾. The spread of infection to kidneys can cause renal damage and chronic kidney disease (CKD) in the long term³⁾. Therefore, prompt diagnosis and immediate treatment for UTI are essential. Numerous studies have been conducted recently to find ways to promptly diagnose UTI. In addition, several imaging tests such as kidney ultrasonography, renal scan, and voiding cystourethrography (VCUG) have been introduced to identify congenital anomalies of the

kidney and urinary tract (CAKUT), acute pyelonephritis (APN), and consequent kidney scarring^{4,5}. However, renal scan and VCUg tests are invasive with a risk of irradiation.

It is generally believed that neutrophil leukocytosis is associated with bacterial infections while lymphocytosis is associated with viral infections⁶, although such associations are not absolute. It has been reported that neutrophils in first responder cells are essential for survival because of their ability to contain and eliminate bacterial and fungal pathogens⁷. Monocytes are also involved in the elimination of pathogens and dead cells in tissues. They are also involved in the initiation of adaptive immunity⁸. Environmental signals at the inflamed site can mediate rapid monocyte recruitment, directing a differentiation program in which monocytes can trigger macrophages or dendritic cells. It has shown that the neutrophil-to-lymphocyte ratio (NLR) and the monocyte-to-lymphocyte ratio (MLR) are useful for diagnosing bacterial infections in febrile patients^{6,9-11}. Han et al.¹⁰ have reported that NLR is a predictive factor for detecting APN in young children with febrile UTI. Wang et al.¹¹ have discovered that MLR is an independent risk factor for a serious *Klebsiella pneumonia* infection. Compared to NLR, MLR is a better indicator for the severity of *Klebsiella pneumonia* infection¹¹.

Neutrophil gelatinase-associated lipocalin (NGAL), also called lipocalin 2, is an iron carrier protein that is abundantly expressed in neutrophils and macrophages. It plays a role in mediating innate immune responses of mammals¹². Earlier studies have demonstrated that NGAL level could be useful for diagnosing APN in children with febrile UTI and that it might be an alternative to imaging tests for pediatric UTI^{13,14}. Additionally, we have previously found that urine NGAL (uNGAL) levels are positively correlated with neutrophil count, monocyte count, NLR, and MLR in children with UTI¹⁵. However, the association of plasma NGAL (pNGAL) levels with leukocyte differential count such as NLR and MLR in children with febrile UTIs remains unknown. Thus, the objective of this study was to determine whether plasma NGAL (pNGAL) levels were associated with leukocyte differential count, especially NLR and MLR, in children with febrile UTIs. Values of NLR, MLR, and NGAL for predicting acute pyelonephritis (APN) in children with febrile UTIs were also validated.

Material and methods

1. Patient characteristics and inclusion criteria

This was a retrospective observational study of patients who were hospitalized in the Department of Pediatrics and Adolescents at our institution from August 21, 2018 to October 20, 2019 due to febrile UTI. Patients aged 1 month to 13 years were included in this study. UTI was defined based on revised guidelines of the American Academy of Pediatrics¹⁶. Patients were defined to have APN if the uptake of 99mTc-dimercaptosuccinic acid (DMSA) 1-5mCi was decreased in a focal, multifocal, or diffuse area due to defects in the renal cortex¹⁷.

Inclusion criteria of this study were as follows: i) hospitalized with fever ($\geq 38^{\circ}\text{C}$); ii) positive results on urine analysis for pyuria or nitrite; and iii) $\geq 100,000/\text{CFU}$ for a single bacterium on urine culture through urethral catheterization in non-toilet-trained infants or midstream urine in toilet-trained children. Patients were excluded if they had any of the following conditions: i) below 1 month of age; ii) recurrent UTI; iii) acute kidney injury (AKI); iv) CKD; v) systemic disease, vi) CAKUT except vesicoureteral reflux (VUR).

Excluded systemic diseases included coincidental viral or mycoplasma infection, Budd-Chiari syndrome, chronic respiratory failure, and others (Fig. 1). Since NGAL is up-regulated in systemic inflammatory response syndrome and systemic diseases without bacterial infection as well as in renal tubular injury¹⁸, the aforementioned groups of patients were not included in this study. Newborns were also excluded from this study due to the immature and plastic nature of neonatal immune response.

We divided patients with UTI into APN and non-APN groups and compared absolute neutrophil count (ANC), lymphocyte count, monocyte count, NLR, and MLR between the two groups. The association between pNGAL and leukocyte differential count was investigated in both APN and non-APN groups. Patients were usually hospitalized for about 7 days. They were discharged when there were no clinical symptoms with the absence of bacteria confirmed by a urine culture test.

2. Laboratory and radiological assessment

Hospitalized children underwent urine tests and basic

blood tests including pNGAL level, white blood cell (WBC) count, ANC, lymphocyte count, monocyte count, and C-reactive protein (CRP) level.

Levels of pNGAL were measured after centrifuging plasma samples at 2,100 g for 10 min at 10°C in ethylenediaminetetraacetic acid using a Cobas 8000 c702 (Roche Diagnostics, Rotkreuz, Switzerland). NGAL Test™ (Bioporto Diagnostics, Denmark) reagent was used for the measurement. It had a detection range of 25–3,000 ng/mL. For urinalysis, we used a Sysmex UF-1000i™ Urine Cell Analyzer System and an Arkay, a fully automated urine analyzer. Urine samples were immediately centrifuged at 494 g for 5 min at 10°C. Patients with febrile UTIs underwent kidney ultrasonography and DMSA scan. When necessary, VCUG was performed on the day before discharge.

3. Statistical analysis

IBM SPSS ver. 20.0 (IBM Co., Armonk, NY, USA) was used for all statistical analyses. For comparison between APN and non-APN groups, Mann-Whitney U test was used for continuous variables and Chi-square test was used for categorical variables. Continuous variables are presented as mean±standard deviation or standard error of the mean. Categorical variables are presented as number (%). Spearman partial correlation coefficient was used to find relationships of pNGAL levels with WBC, absolute neutrophil count (ANC), monocyte, NLR, and MLR after adjusting for age and sex. Univariable logistic regression analyses were performed to analyze variables associated with the presence of APN. Parameters associated with APN in univariable logistic regression analyses ($P<0.05$) were included in a multivariable logistic regression analysis. Receiver operating curve (ROC) analyses were performed to determine how accurately pNGAL level and leukocyte differential count could discriminate between APN and non-APN. The area under the curve (AUC) with 95% confidence intervals (CIs) was calculated. In all statistical analyses, $P<0.05$ was considered statistically significant.

4. Ethics statement

This study was approved by the Institutional Review Board (IRB) and the Research Ethics Committee of Korea University Ansan Hospital [IRB number: 2019AS0155]. The IRB exempted the requirement of informed consent

because of the retrospective nature of this study. Personal identifiers were completely removed and data were analyzed anonymously. This study was performed in accordance with the Declaration of Helsinki.

Results

1. Patient demographics

A total of 233 patients were hospitalized for UTI. Of them, 79 were excluded from this study. Of the remaining 154 patients, 82 had APN while 72 did not (Fig. 1). There was no significant differences in age or sex between APN and non-APN groups. However, the period of hospitalization was longer in the APN group (APN vs. non-APN: 7.27 ± 1.58 days vs. 6.42 ± 1.46 days, $P<0.05$). In addition, the APN group had more cases with fever that persisted for ≥ 72 hours after onset of symptoms (APN vs. non-APN, 46.3% vs. 20.8%, $P<0.05$). Levels of pNGAL, erythrocyte sedimentation rate, CRP, WBC, ANC, monocyte count, and NLR were significantly higher in the APN group than in the non-APN group (all $P<0.05$). However, there was no significant difference in creatinine, lymphocyte, or MLR between the two groups. In all patients, serum creatinine levels were within the normal range for their age (Table 1).

2. Association between pNGAL level and leukocyte differential count

Age and sex-adjusted *Spearman* correlation analysis was performed to find out the relationship between pNGAL level and leukocyte differential count in both APN and

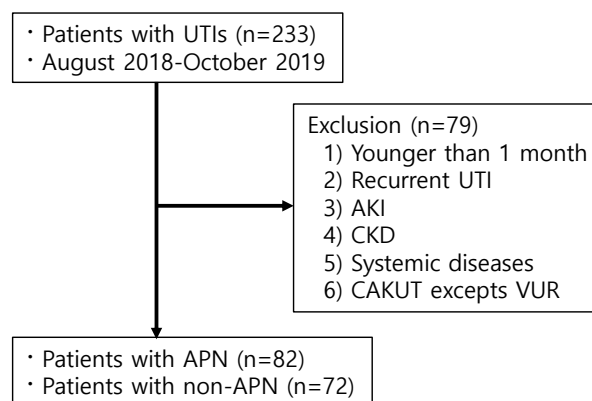


Fig. 1. Study flow diagram.

non-APN groups. In the APN group, WBC, ANC, NLR, and MLR were associated with pNGAL level (all $P<0.05$). In the non-APN group, WBC, ANC, and NLR were associated with pNGAL level (all $P<0.05$) (Table 2). However, levels of pNGAL were not fully available for all patients because there were cases when the test was not done on the first day of admission.

Table 1. Patient Characteristics and Clinical Findings

	APN N=82	non-APN N=72	P-value
Male, n (%)	54 (65.9%)	45 (62.5%)	0.791*
Age (month)	10.8±23.5	8.54±15.1	0.482 [†]
Admission day	7.3±1.6	6.4±1.5	0.001 [†]
Fever duration (> 72 hrs), n (%)	38 (46.3%)	15 (20.8%)	0.002*
pNGAL (ng/mL)	176.0±141.0	82.1±59.0	<0.001 [†]
Cr (mg/dL)	0.27±0.09	0.24±0.06	0.075 [†]
ESR (mm/hr)	35.4±20.6	21.7±18.3	<0.001 [†]
CRP (mg/L)	5.72±4.65	2.56±2.66	<0.001 [†]
WBC (/mm ³)	17,975±5,878	13,509±5,243	<0.001 [†]
ANC (/mm ³)	10,163±4766	6,366±3751	<0.001 [†]
Lymphocyte count (/mm ³)	5,722±2,304	5,489±2,333	0.534 [†]
Monocyte count (/mm ³)	1,908±1,037	1,430±738	0.001 [†]
NLR	2.43±3.93	1.35±1.05	0.019 [†]
MLR	0.38±0.26	0.31±0.25	0.1 [†]

*Chi-square test; [†]Mann-Whitney *U* test.

Values are presented as mean±standard deviation or number (%).

Abbreviations: APN, acute pyelonephritis; pNGAL, plasma neutrophil gelatinase-associated lipocalin; BUN, blood urea nitrogen; Cr, creatinine; ESR, Erythrocyte sedimentation rate; CRP, C-reactive protein; WBC, white blood cell; ANC, absolute neutrophil count; NLR, neutrophil-to-lymphocyte ratio; MLR, monocyte-to-lymphocyte ratio.

Table 2. Spearman Correlation Analysis between pNGAL Level and Leukocyte Differential Count after Adjusting for Age and Sex

	APN		non-APN	
	Spearman's ρ	P-value	Spearman's ρ	P-value
ANC (/mm)	0.396	0.001	0.421	0.002
Monocyte (/mm ³)	-0.008	0.951	-0.031	0.827
WBC (/mm ³)	0.293	0.019	0.37	0.008
NLR	0.444	<0.001	0.402	0.004
MLR	0.295	0.018	0.157	0.271

Abbreviations: Spearman's ρ , Spearman partial correlation coefficient; pNGAL, plasma neutrophil gelatinase-associated lipocalin; APN, acute pyelonephritis; ANC, absolute neutrophil count; WBC, white blood cell; NLR, neutrophil-to-lymphocyte ratio; MLR, monocyte-to-lymphocyte ratio.

3. Univariable and multivariable logistic regression analyses for APN in patients with UTI

In univariable logistic analyses, pNGAL, WBC, CRP, ANC, monocyte count, and NLR were associated with the presence of APN in children with febrile UTIs (all $P<0.05$). Among these variables, only pNGAL level was an independent predictor for the presence of APN in a multivariable logistic regression analysis ($P<0.05$) (Table 3).

4. ROC analyses

ROC analysis was performed to find the most appropriate parameter for detecting APN in febrile UTIs. Results revealed that pNGAL level had the highest AUC (0.804, 95% CI: 0.721–0.871), followed by WBC (0.721, 95% CI: 0.644–0.791), ANC (0.760, 95% CI: 0.669–0.812), NLR (0.730, 95% CI: 0.614–0.765), MLR (0.636, 95% CI: 0.529–0.688), and CRP (0.741, 95% CI: 0.652–0.817) (all $P<0.05$) (Fig. 2). The best cut-off value of pNGAL for detecting APN was 94.3 ng/mL, with a sensitivity of 72.7% and a specificity of 79.3%. The best cut-off value of WBC was 15,310/mm³, with a sensitivity of 69.5% and a specificity of 68.1%. The best cut-off value of ANC was 7,031/mm³, with a sensitivity of 75.6% and a specificity of 66.7%. The best cut-off value of NLR was 1.53, with a sensitivity of 58.5% and a specificity of 75%. The best cut-off value of MLR was 0.35, with a sensitivity of 46.3% and a specificity of 77.8%. The best cut-off value

Table 3. Univariable and Multivariable Logistic Regression Analyses for APN in Patients with UTI

Variables	Univariable logistic regression		Multivariable logistic regression	
	Odds ratio (95% CI)	P-value	Odds ratio (95% CI)	P-value
Age (month)	1.01 (0.99–1.02)	0.497	0.99 (0.96–1.03)	0.749
Sex (male)	0.87 (0.44–1.68)	0.669	0.59 (0.23–1.47)	0.264
pNGAL (ng/mL)	1.02 (1.01–1.02)	<0.001	1.01 (1.00–1.02)	0.033
WBC (/mm ³)	1.00 (1.00–1.00)	<0.001	1.00 (1.00–1.00)	0.661
CRP (mg/L)	1.31 (1.16–1.48)	<0.001	1.14 (0.96–1.37)	0.146
ANC (/mm ³)	1.00 (1.00–1.00)	<0.001	1.00 (1.00–1.00)	0.854
Lymphocyte (/mm ³)	1.00 (1.00–1.00)	0.532		
Monocyte (/mm ³)	1.00 (1.00–1.00)	0.002	1.00 (1.00–1.00)	0.463
NLR	1.72 (1.23–2.42)	0.002	1.21 (0.80–3.73)	0.728
MLR	3.21 (0.76–13.5)	0.112		

Abbreviations: APN, acute pyelonephritis; UTI, urinary tract infection; pNGAL, plasma neutrophil gelatinase-associated lipocalin; WBC, white blood cell; CRP, C-reactive protein; ANC, absolute neutrophil count; NLR, neutrophil-to-lymphocyte ratio; MLR, monocyte-to-lymphocyte ratio.

of CRP was 2.1, with a sensitivity of 76.8% and a specificity of 58.3% (Table 4).

Discussion

The aim of this study was to assess the relationship between pNGAL level and leukocyte differential count in children with febrile UTIs. pNGAL level was found to be correlated with ANC and NLR in both APN and non-APN groups. In particular, it had an association with MLR in

the APN group, but not in the non-APN group. Results of logistic regression analysis confirmed that only pNGAL level could predict the presence of APN independently in children with febrile UTIs. For predicting APN, pNGAL level was found to have the highest AUC value among examined variables. Therefore, pNGAL might be associated with neutrophil count and NLR in febrile UTI. In addition, it was associated with MLR, especially in those with APN. We also confirmed that pNGAL could be a useful tool for diagnosing APN in children with febrile UTIs.

The migration of leukocytes is a strictly regulated process that controls the distribution of immune cells throughout the body¹⁹. Upon infection, neutrophils and monocytes move to the peripheral site. They are essential for the defense against a number of microbial pathogens²⁰. In a normal condition, these cells are rarely present in peripheral tissues. However, if an infection occurs, numbers of neutrophils and monocytes are increased rapidly. They can proliferate in the bone marrow and migrate to the site of the infection or inflammation²⁰. Recent studies have shown that neutrophils are involved in both protective and detrimental responses to various types of inflammation and infectious diseases⁷. Condrón et al.²¹ have suggested that a defective host neutrophil response can lead to a susceptibility to recurrent UTI. Neutrophils from recurrent UTI patients show a significant decrease in bactericidal function compared to those in healthy controls, with the former demonstrating a decrease in activation capacity²¹. This finding implies that a reduced function of neutrophils can result in an inadequate bacterial eradication and an increased susceptibility to recurrent infections. Likewise, monocytes play an important role in the initiation of adaptive immunity, the removal of pathogens and dead cells, and tissue healing⁸.

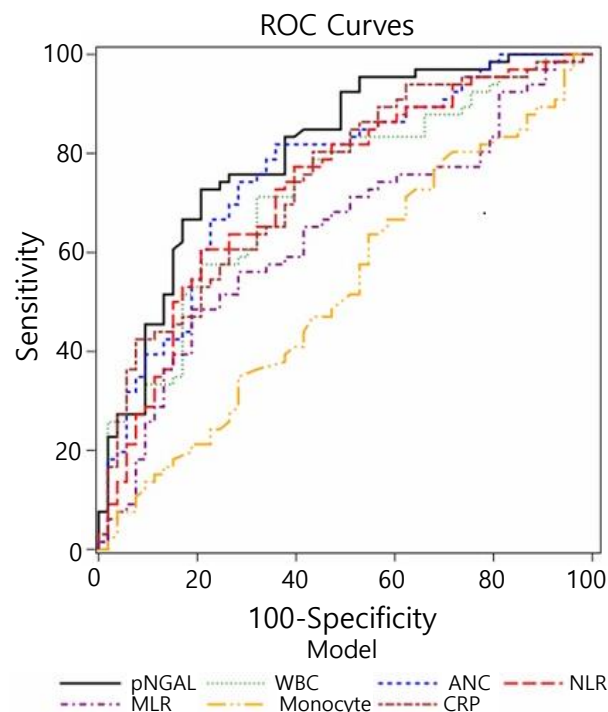


Fig. 2. Receiver operating curves for finding a reliable predictive biomarker for APN.

Table 4. Predictive Values of Biomarkers for APN Based on ROC Curve Analysis

	AUC	95% CI	P-value	Cut-off value	Sensitivity (%)	Specificity (%)
pNGAL (ng/mL)	0.804	0.721–0.871	<0.0001	94.3	72.7	79.3
WBC (/mm ³)	0.721	0.644–0.791	<0.0001	15,310	69.5	68.1
ANC (/mm ³)	0.760	0.669–0.812	<0.0001	7,031	75.6	66.7
Monocyte (/mm ³)	0.527	0.437–0.600	0.680	13	75.6	30.6
NLR	0.730	0.614–0.765	<0.0001	1.53	58.5	75.0
MLR	0.636	0.529–0.688	0.016	0.35	46.3	77.8
CRP (mg/L)	0.741	0.652–0.817	<0.0001	2.1	76.8	58.3

Abbreviations: APN, acute pyelonephritis; ROC, Receiver operating curve; AUC, area under the curve; CI, confidence interval; pNGAL, plasma neutrophil gelatinase-associated lipocalin; WBC, white blood cell; ANC, absolute neutrophil count; NLR, neutrophil-to-lymphocyte ratio; MLR, monocyte-to-lymphocyte ratio; CRP, C-reactive protein.

Monocytes recruited into the tissue can mediate defense mechanism against pathogens and contribute to inflammatory reactions. Thus, regulation of circulating monocytes are crucial in controlling disease progression as well as host defense from invading pathogens¹⁹. Naess et al.⁶ have reported that both NLR and MLR are effective for diagnosing bacterial infections in hospitalized patients with fever and that NLR is more useful than commonly used diagnostic blood tests for diagnosing septicemia. Jager et al.²² have reported that NLR and lymphocytopenia are better markers for predicting bacteremia than conventional infection markers such as CRP, WBC, and neutrophil count. In our previous study, we have found that children with UTIs show higher monocyte counts than those with viral infections¹⁵. Monocyte count has been found to be more specific than any other indices of leukocyte differential count for detecting UTIs in children with fever¹⁵. In the present study, ANC, monocyte count, NLR, and pNGAL level were significantly higher in the APN group than in the non-APN group. These results suggest that neutrophils and monocytes might play a role in the presence and severity of UTI in children with fever.

NGAL is an iron-carrier protein produced by neutrophil granules that play a vital role in the innate immune system against bacterial infections^{23,24}. When there is an infection, bacteria require iron for growth and metabolism in the host. Bacteria acquire much of their iron from the host by synthesizing siderophores that can remove iron and transport it into the pathogen^{25,26}. This leads to activation of neutrophils of the host to release NGAL, which prevents bacteria from absorbing iron^{24,27}. NGAL transcription is induced by bacterial lipopolysaccharides via a Toll-like receptor. Bacterial proliferation is inhibited by the depletion of iron-laden siderophores such as enterochelin²⁸. Elevated pNGAL levels have been reported in patients with community-acquired pneumonia (CAP), sepsis, bacterial meningitis, peritonitis, and UTI²⁹. pNGAL level is positively correlated with CRP and procalcitonin levels in patients with CAP³⁰. It shows the highest AUC value for predicting mortality of CAP³⁰. In another paper, lipocalin 2 concentration was significantly higher in patients with acute bacterial meningitis than in those with viral meningitis³¹. We have repeatedly shown that NGAL could be a useful marker for detecting and managing UTI and APN in children^{4,14,}

³²⁻³⁴. Increased pNGAL levels are associated with the presence of APN and subsequent kidney scarring in children with febrile UTIs^{14,32,33}. Recently, we have found that uNGAL level is positively correlated with ANC, monocyte count, NLR, and MLR in children with UTIs¹⁵. Both monocyte count and uNGAL level are useful for distinguishing between UTI and non-UTI groups¹⁵. In the present study, pNGAL level was correlated with ANC and NLR in all patients with UTI after adjusting for age and sex. pNGAL level also showed an association with MLR in the APN group. MLR was associated with pNGAL level in the APN group. These findings imply that ANC, NLR, and NGAL might play a role in managing children with febrile UTI and that MLR might be useful for assessing children with APN.

In the present study, only pNGAL level was an independent predictor for APN in children with febrile UTIs when pNGAL, WBC, CRP, ANC, monocyte count, and NLR were included in a multivariable logistic analysis. ROC analyses also showed that pNGAL level had the highest AUC value for predicting APN, followed by ANC, NLR, WBC, and MLR. These findings were consistent with our previous findings^{14,15}. Krzemien et al.¹³ have reported that pNGAL level is a good marker for early diagnosis of UTIs in febrile infants and that it has higher sensitivity and specificity than uNGAL. Other studies have also suggested that pNGAL might be a sensitive predictor to identify APN and monitor treatment response in pediatric UTIs^{32,33}.

APN can progress to life-threatening sepsis and multi-organ failure. When accompanied by sepsis, the risk of mortality and long-term hospitalization dramatically increases and several complications can occur³⁵⁻³⁷. As APN is one of serious bacterial infections that can cause kidney scarring in children. Thus, early diagnosis and prompt treatment are crucial. When NGAL measurement is unavailable, monitoring the level of neutrophil count or NLR in children with suspected UTIs may be useful. MLR can be additionally helpful for predicting APN in febrile UTIs. Taken together, there might be a correlation between NGAL and leukocyte differential count in patients with febrile UTIs.

This study has some limitations. First, this study was performed in a single institution with a relatively small sample size. In addition, this was a retrospective study. Some child-

ren took oral antibiotics before their hospitalization. In some children, WBC counts in the initial urine analysis were normal. In those cases, children were monitored without intravenous antibiotic treatment until urine culture reports showed that bacteria were growing, usually the second day of hospitalization. Lastly, pNGAL data were not collected if UTI was not suspected in the initial presentation. Patients with initial pNGAL values missing were excluded from some analysis.

In conclusion, pNGAL level is associated with blood leukocyte differential count in children with febrile UTIs. While ANC and NLR could be helpful for diagnosing febrile UTIs, MLR would be better for diagnosing APN in children with UTI. Additional studies involving multiple centers with a large sample size are needed to clarify the association of leukocyte differential count with NGAL level in children with suspected UTIs.

Conflict of interest

No potential conflict of interest relevant to this article was reported.

ORCID

Min Hwa Son <https://orcid.org/0000-0002-4185-1712>

Hyung Eun Yim <https://orcid.org/0000-0001-9805-9278>

Kee Hwan Yoo <https://orcid.org/0000-0001-6490-4293>

References

- Montini G, Tullus K, Hewitt I. Febrile urinary tract infections in children. *N Engl J Med* 2011;365:239-50.
- Morello W, La Scola C, Alberici I, Montini G. Acute pyelonephritis in children. *Pediatr Nephrol* 2016;31:1253-65.
- Yilmaz A, Sevetoglu E, Gedikbasi A, Karyagar S, Kiyak A, Mulazimoglu M, et al. Early prediction of urinary tract infection with urinary neutrophil gelatinase associated lipocalin. *Pediatr Nephrol* 2009;24:2387-92.
- Yim HE, Yim H, Bae ES, Woo SU, Yoo KH. Predictive value of urinary and serum biomarkers in young children with febrile urinary tract infections. *Pediatr Nephrol* 2014;29:2181-9.
- Kass EJ, Kernen KM, Carey JM. Paediatric urinary tract infection and the necessity of complete urological imaging. *BJU Int* 2000;86:94-6.
- Naess A, Nilssen SS, Mo R, Eide GE, Sjørusen H. Role of neutrophil to lymphocyte and monocyte to lymphocyte ratios in the diagnosis of bacterial infection in patients with fever. *Infection* 2017;45:299-307.
- Witter AR, Okunnu BM, Berg RE. The Essential role of neutrophils during infection with the intracellular bacterial pathogen *Listeria monocytogenes*. *J Immunol* 2016;197:1557-65.
- Ingersoll MA, Platt AM, Potteaux S, Randolph GJ. Monocyte trafficking in acute and chronic inflammation. *Trends Immunol* 2011;32:470-7.
- Forget P, Khalifa C, Defour JP, Latinne D, Van Pel MC, De Kock M. What is the normal value of the neutrophil-to-lymphocyte ratio? *BMC Res Notes* 2017;10:12.
- Han SY, Lee IR, Park SJ, Kim JH, Shin JI. Usefulness of neutrophil-lymphocyte ratio in young children with febrile urinary tract infection. *Korean J Pediatr* 2016;59:139-44.
- Wang JL, Lu XY, Xu XH, Zhang KJ, Gong H, Lv D, et al. Predictive role of monocyte-to-lymphocyte ratio in patients with Klebsiella pneumonia infection: a single-center experience. *Medicine (Baltimore)* 2019;98:e17215.
- Ichino M, Kuroyanagi Y, Kusaka M, Mori T, Ishikawa K, Shiroki R, et al. Increased urinary neutrophil gelatinase associated lipocalin levels in a rat model of upper urinary tract infection. *J Urol* 2009;181:2326-31.
- Krzemien G, Panczyk-Tomaszewska M, Adamczuk D, Kotula I, Demkow U, Szmigielska A. Neutrophil gelatinase-associated lipocalin: a biomarker for early diagnosis of urinary tract infections in infants. *Adv Exp Med Biol* 2018;1047:71-80.
- Kim BK, Yim HE, Yoo KH. Plasma neutrophil gelatinase-associated lipocalin: a marker of acute pyelonephritis in children. *Pediatr Nephrol* 2017;32:477-84.
- Jang JW, Yim HE, Yoo KH. Association of neutrophil gelatinase associated lipocalin and leukocyte differential count in children with febrile urinary tract infections. *Child Kidney Dis* 2020;24:83-90.
- Subcommittee on Urinary Tract Infection SCoQI, Management, Roberts KB. Urinary tract infection: clinical practice guideline for the diagnosis and management of the initial UTI in febrile infants and children 2 to 24 months. *Pediatrics* 2011;128:595-610.
- Jaksic E, Bogdanovic R, Artiko V, Saranovic DS, Petrasinovic Z, Petrovic M, et al. Diagnostic role of initial renal cortical scintigraphy in children with the first episode of acute pyelonephritis. *Ann Nucl Med* 2011;25:37-43.
- Schmidt-Ott KM, Mori K, Li JY, Kalandadze A, Cohen DJ, Devarajan P, et al. Dual action of neutrophil gelatinase-associated lipocalin. *J Am Soc Nephrol* 2007;18:407-13.
- Serbina NV, Pamer EG. Monocyte emigration from bone marrow during bacterial infection requires signals mediated by chemokine receptor CCR2. *Nat Immunol* 2006;7:311-7.

- 20) Serbina NV, Hohl TM, Cherny M, Pamer EG. Selective expansion of the monocytic lineage directed by bacterial infection. *J Immunol* 2009;183:1900-10.
- 21) Condrón C, Toomey D, Casey RG, Shaffii M, Creagh T, Bouchier-Hayes D. Neutrophil bactericidal function is defective in patients with recurrent urinary tract infections. *Urol Res* 2003;31:329-34.
- 22) de Jager CP, van Wijk PT, Mathoera RB, de Jongh-Leuvenink J, van der Poll T, Wever PC. Lymphocytopenia and neutrophil-lymphocyte count ratio predict bacteremia better than conventional infection markers in an emergency care unit. *Crit Care* 2010;14:1-8.
- 23) Xu SY, Carlson M, Engstrom A, Garcia R, Peterson CG, Venge P. Purification and characterization of a human neutrophil lipocalin (HNL) from the secondary granules of human neutrophils. *Scand J Clin Lab Invest* 1994;54:365-76.
- 24) Berger T, Togawa A, Duncan GS, Elia AJ, You-Ten A, Wakeham A, et al. Lipocalin 2-deficient mice exhibit increased sensitivity to *Escherichia coli* infection but not to ischemia-reperfusion injury. *Proc Natl Acad Sci USA* 2006;103:1834-9.
- 25) Ratledge C, Dover LG. Iron metabolism in pathogenic bacteria. *Annu Rev Microbiol* 2000;54:881-941.
- 26) Faraldo-Gomez JD, Sansom MS. Acquisition of siderophores in gram-negative bacteria. *Nat Rev Mol Cell Biol* 2003;4:105-16.
- 27) Nguyen MT, Devarajan P. Biomarkers for the early detection of acute kidney injury. *Pediatr Nephrol* 2008;23:2151-7.
- 28) Flo TH, Smith KD, Sato S, Rodriguez DJ, Holmes MA, Strong RK, et al. Lipocalin 2 mediates an innate immune response to bacterial infection by sequestering iron. *Nature* 2004;432:917-21.
- 29) Nasioudis D, Witkin SS. Neutrophil gelatinase-associated lipocalin and innate immune responses to bacterial infections. *Med Microbiol Immunol* 2015;204:471-9.
- 30) Kim JW, Hong DY, Lee KR, Kim SY, Baek KJ, Park SO. Usefulness of plasma neutrophil gelatinase-associated lipocalin concentration for predicting the severity and mortality of patients with community-acquired pneumonia. *Clin Chim Acta* 2016;462:140-5.
- 31) Guiddir T, Deghmane AE, Giorgini D, Taha MK. Lipocalin 2 in cerebrospinal fluid as a marker of acute bacterial meningitis. *BMC Infect Dis* 2014;14:1-8.
- 32) Sim JH, Yim HE, Choi BM, Lee JH, Yoo KH. Plasma neutrophil gelatinase-associated lipocalin predicts acute pyelonephritis in children with urinary tract infections. *Pediatr Res* 2015;78:48-55.
- 33) Lee JH, Yim HE, Yoo KH. Associations of plasma neutrophil gelatinase-associated lipocalin, anemia, and renal scarring in children with febrile urinary tract infections. *J Korean Med Sci* 2020;35:e65.
- 34) Moon JH, Yoo KH, Yim HE. Urinary neutrophil gelatinase-associated lipocalin: a marker of urinary tract infection among febrile children. *Clin Exp Pediatr* 2020.
- 35) Kim B, Myung R, Kim J, Lee MJ, Pai H. Descriptive epidemiology of acute pyelonephritis in Korea, 2010-2014: Population-based Study. *J Korean Med Sci* 2018;33:e310.
- 36) Elkharrat D, Chastang C, Boudiaf M, Le Corre A, Raskine L, Caulin C. Relevance in the emergency department of a decisional algorithm for outpatient care of women with acute pyelonephritis. *Eur J Emerg Med* 1999;6:15-20.
- 37) Tenner SM, Yadven MW, Kimmel PL. Acute pyelonephritis - preventing complications through prompt diagnosis and proper therapy. *Postgrad Med* 1992;91:261-8