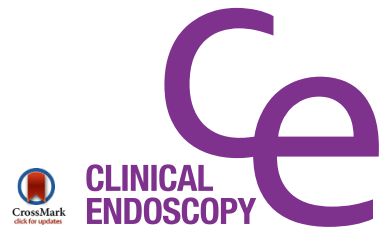


## ERRATUM

Clin Endosc 2016;49:310  
<http://dx.doi.org/10.5946/ce.2015.059.e1>  
Print ISSN 2234-2400 / On-line ISSN 2234-2443



### Open Access

## Tracheal Involvement in Crohn Disease: the First Case in Korea

Seunghyun Park<sup>1</sup>, Jongha Park<sup>1</sup>, Hyun-Kuk Kim<sup>2</sup>, Ji Yeon Kim<sup>3</sup>, So Chong Hur<sup>1</sup>, Ju Hyoung Lee<sup>1</sup>, Jae Won Jung<sup>1</sup> and Juwon Lee<sup>1</sup>

Divisions of <sup>1</sup>Gastroenterology and <sup>2</sup>Pulmonology, Department of Internal Medicine, <sup>3</sup>Department of Pathology, Inje University Haeundae Paik Hospital, Inje University College of Medicine, Busan, Korea

Clin Endosc 2016;49:202-206  
<http://dx.doi.org/10.5946/ce.2015.059>

The publisher wishes to apologize for incorrectly displaying the author (Ju Hyoung Lee) name.  
We correct his name from Ju Hyung Lee to Ju Hyoung Lee.