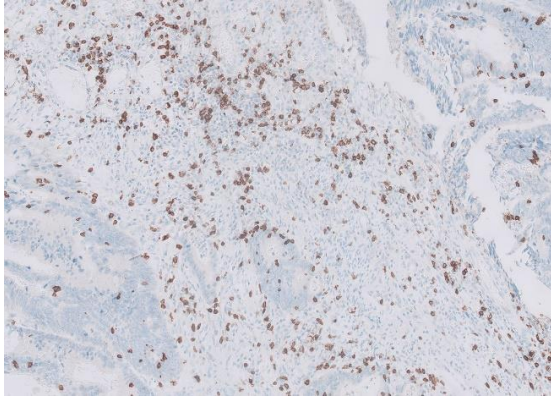
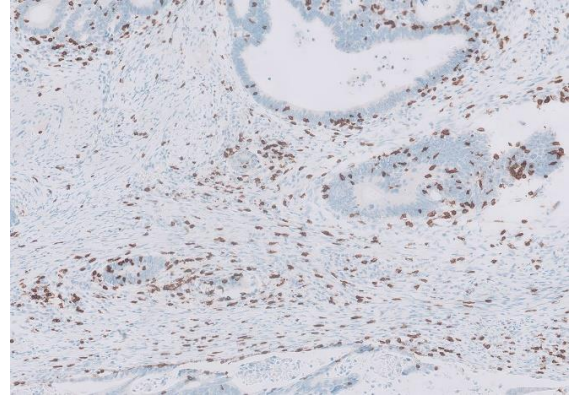


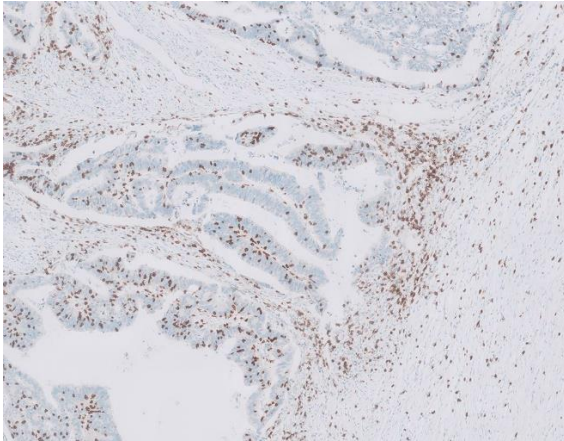
A. CD3 in tumor center – high density



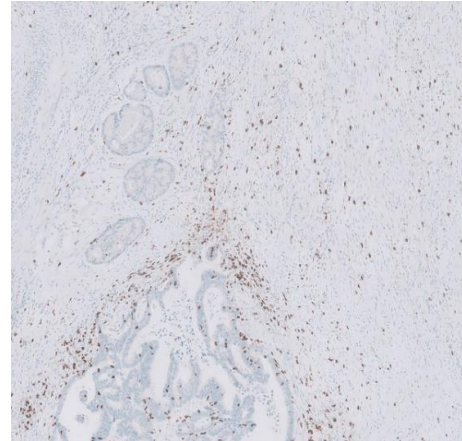
B. CD3 in tumor center – low density



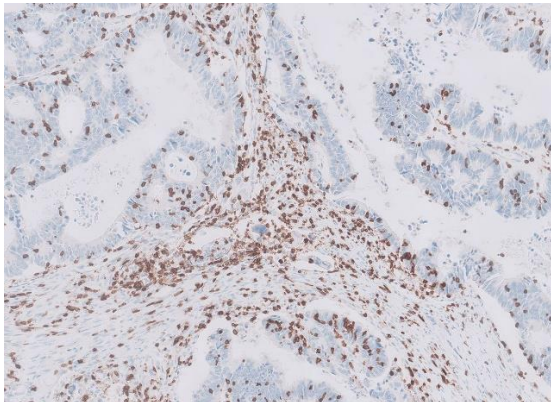
C. CD8 in invasive margin – high density



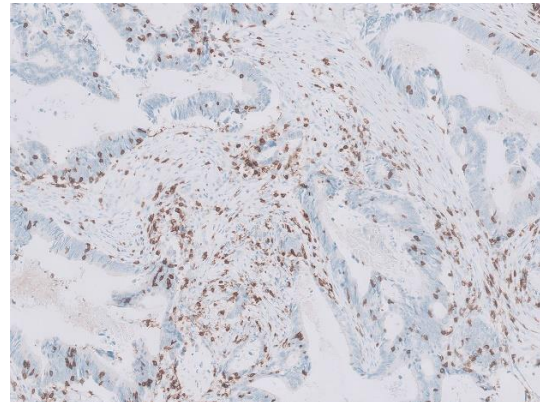
D. CD8 in invasive margin – low density



E. FOXP3 in tumor center – high density



F. FOXP3 in tumor center – low density



S1 Fig. The immunohistochemical findings of CD3, CD8 and FoxP3 for tumor infiltrating lymphocytes of stroma in tumor center (TC) and invasive margin (IM) of tumor ($\times 200$).