

Primary Invasive Intestinal Aspergillosis in a Non-Severely Immunocompromised Patient

Eunmi Gil, M.D.¹, Tae Sun Ha, M.D.¹, Gee Young Suh, M.D., Ph.D.^{1,2}, Chi Ryang Chung, M.D.¹,
and Chi-Min Park, M.D., Ph.D.^{1,3}

¹Department of Critical Care Medicine, ²Division of Pulmonary and Critical Care Medicine, Department of Medicine, ³Department of Surgery, Samsung Medical Center, Sungkyunkwan University School of Medicine, Seoul, Korea

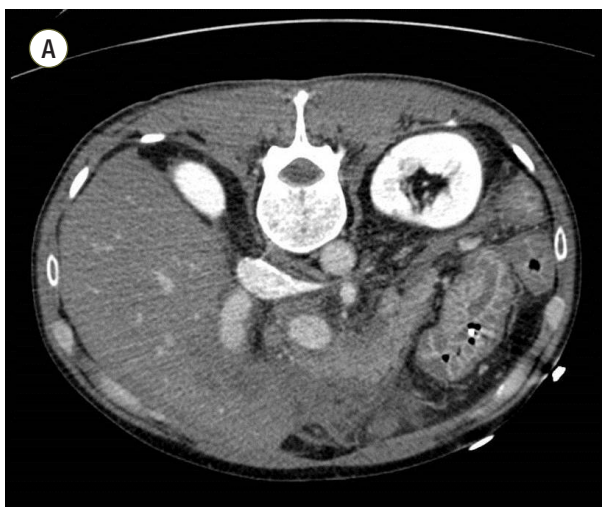
2016 May 31(2):129-133 / <http://dx.doi.org/10.4266/kjccm.2016.31.2.129>

We found an error in this article. The Fig. 1A should be corrected as following:

In this article, on page 130, Fig. 1A has an error. Fig. 1A was upside down.

We present the correct figure as below:

Before correction



After correction



We apologize for any inconvenience that may have caused.