

Current Situation of Re - emerging Malaria and Elimination Plan in Republic of Korea

E - mail : bgyang@mohw.go.kr

가

2010

15%

가

40%가

, 102 2

가 , 100 ~ 200

가 가

1993

() 1998

. 1960 가 2000 4,142 '2001

3 30% (1).

DMZ

가,

DMZ

가

1979

가 10 ~ 30

1993 1

가

2000 4

가 7 ~ 8 10

가 2000

2003

1. ()

93	94	95	96	97	98	99	00	01	02	03
1	21	107	356	1,724	3,932	3,621	4,142	2,556	1,799	1,171
1	18	88	285	1,156	1,657	1,084	1,289	685	430	287
	1	12	25	207	1,127	996	1,273	756	472	278
-	2	7	46	361	1,148	1,541	1,580	1,115	897	606

94.5%가 5 10

(1).

DMZ

가

10

10

() 2000 17

2001

12 . . (

’ ’ ’ ’ ’ ’

’ ’ ’ ’ ’

), 2002 9 . .

(, , , ,)

), 2003

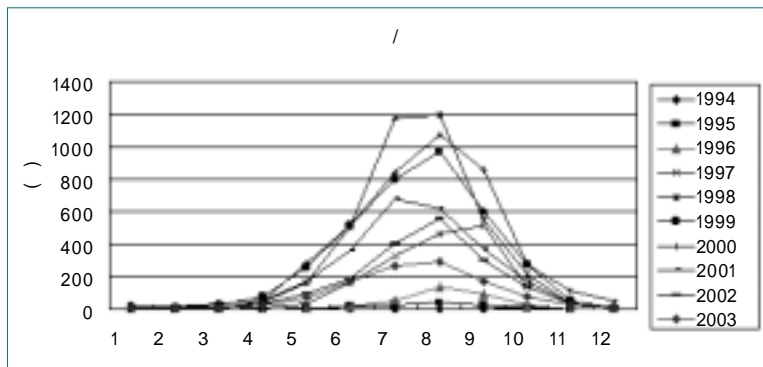
9 . . (, ,

1 1 1 1 1

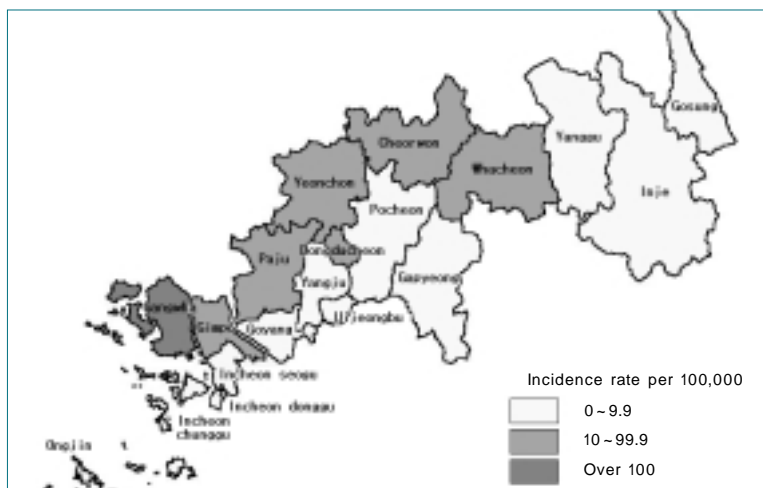
$$, \quad)$$

(2).

2003



1.



2.

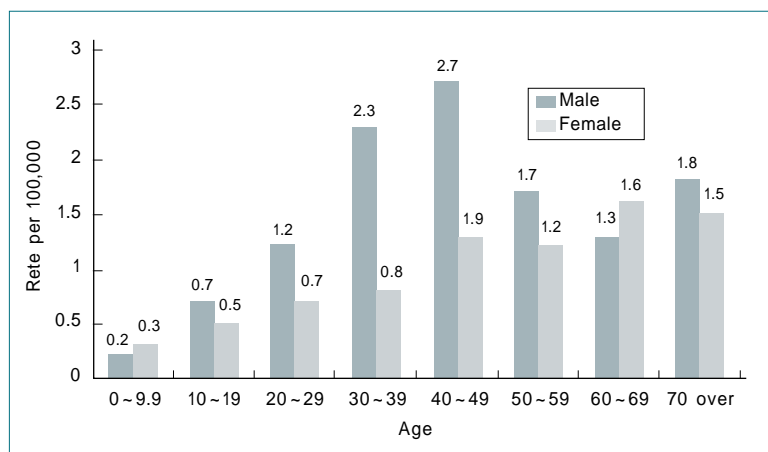
(2003)

30 49 가

60

(3).

1998



3. / (2003)

(Passive

Case Detection)

가

2000

가

가

가

,

.

,

WHO,

2003

2010

2001

WHO

. 2000

가

가

가

2010

가 가

⑤