

만성 피로 증후군의 개요

Chronic Fatigue Syndrome : An Overview

가

108

Ho Cheol Shin, M.D.

Department of Family Medicine

Sungkyunkwan University School of Medicine, Kangbuk Samsung Hospital

E - mail : hshinsmc@samsung.co.kr

Abstract

Fatigue is probably the most common symptom from both acute and chronic illnesses. It can be defined as a pervasive sense of tiredness or lack of energy that may not be related to exertion. Fatigue is transitory in most cases, however, if it is prolonged or disabling, a significant problem such as chronic fatigue syndrome (CFS) may be warranted. CFS is a complex, debilitating disorder characterized by severe persistent or relapsing fatigue for at least 6 months and a group of characteristic but nonspecific symptoms. Many researchers have proposed that CFS has a specific underlying cause. Currently, however, there is no evidence that supports this view. In addition, since there is no specific physical findings or definitive laboratory tests for consistent biological markers, the diagnosis of CFS depends on operational criteria that do not afford validity and is primarily a diagnosis by exclusion. The prognosis is poor and often the disability and impairment of daily function and performance may be prolonged. The limited understanding of CFS has complicated the management of this disorder. Therefore, the treatment of CFS may be variable and should be tailored to each patient - it should include exercise, diet, good sleep hygiene, antidepressants, and other medications, depending on the patient's clinical presentation.

Keywords : **Fatigue; Chronic fatigue; Chronic fatigue syndrome**

: ; ;

가

가

" 가

(1). ,

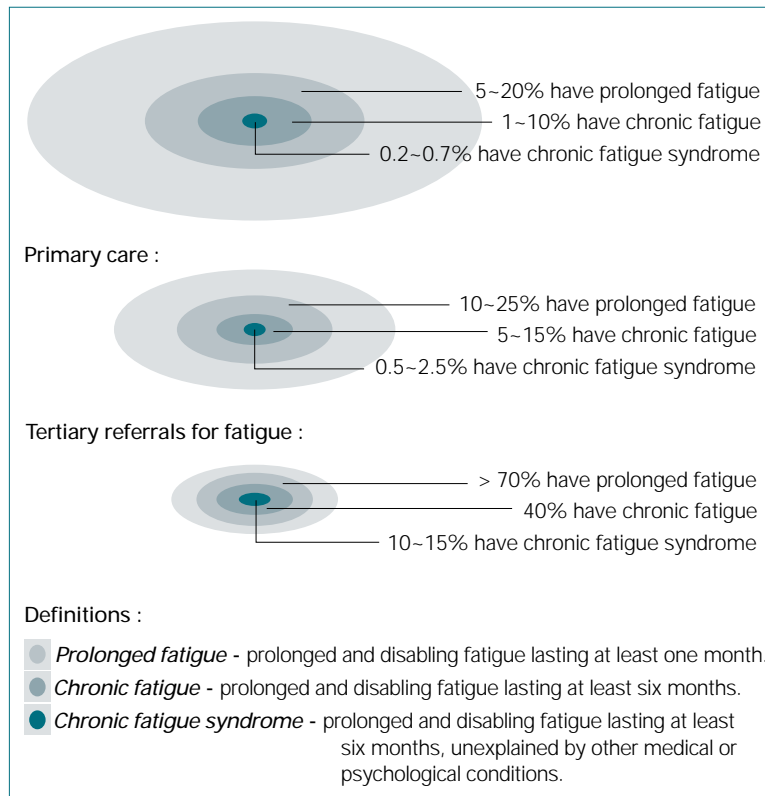
, , 가

가

1

(prolonged) , 6
(chronic) (2). 가
가 (4). 70
가
가
, (continuum) 1900
가 (3). ,
, 가
가
가 1955 Royal Free
Hospital
,
,
, 1980
가 10 Tahoe
가
가 Epstein - Barr (EBV) 가
가
(5, 6).
EBV
가
1980 EBV가
1750 Manning-
ham
가 , 1869 George
Beard가

	1. ‘	’	(CDC, 1994)
	•	가	가 6 가
	•	4가	6
1988 (Centers for Disease Control and Prevention, CDC)	가		
(7).	가	()	
			가
		6	
‘ (Chronic Fa- tigue Syndrome)’	•		
	•		
	•		
CDC	가	가 2	
	가		
	가		
	가	6	
1994 CDC	4가		
	가		
가	, 1994 CDC	(1)(8).	
	1994 CDC	가	가



가
2003
CDC
가
'Canadian
가
가
(9).

(1)

1. . . 1
15~
가 가 30% , 6
10~20%
9~13%가
, 1~3%가
(10, 11). (12)
4.7%가
6
가 (1).
가
1994
12~18

12

. 1994 CDC

0.42% 가(13),

2.6% 가(15)

(16).

가

가

1994 CDC

CDC

가

1.22%가

5

31.4%, 10

48.1%

(15).

(17).

28%

가

가

가

(18).

가

가

	(%)	(0~3)
	100.0	2.8
	97.3	2.7
	93.0	2.2
	91.9	2.4
	87.8	2.1
	87.1	2.3
	85.6	2.0
	84.3	2.1
	81.8	2.0
	74.1	1.9
	79.2	2.0
	69.7	1.7
	72.2	1.8
	73.3	1.9
(photophobia)	70.7	1.6
/	57.7	1.3
	48.5	0.9

), 가
.
(-2)(9, 19).

가

가 .

가

가

가,

가

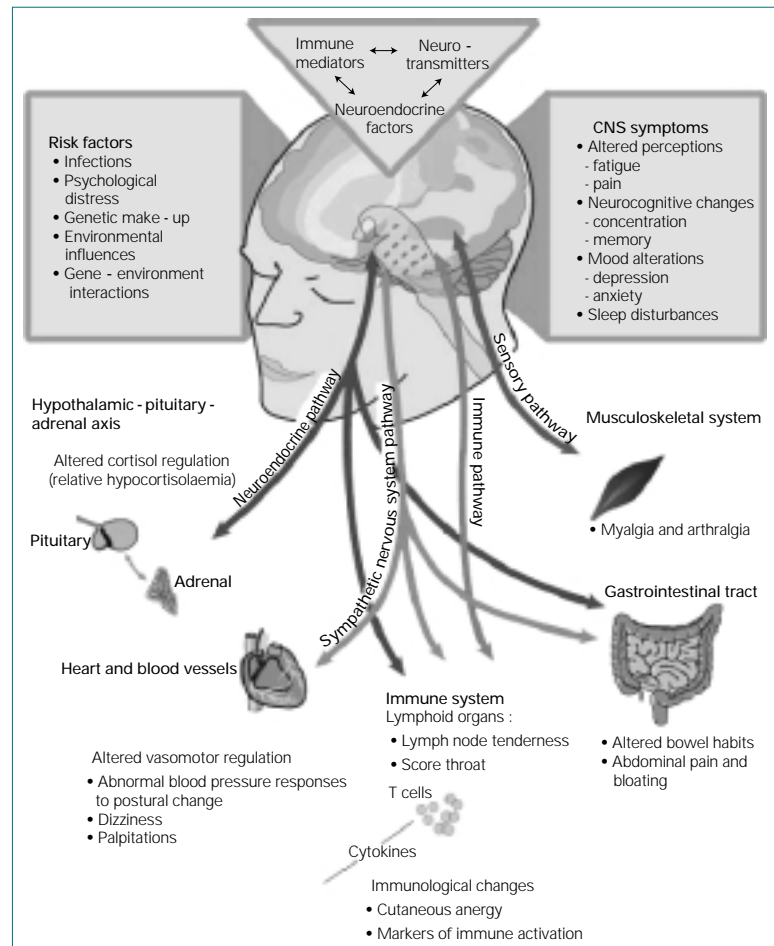
가

가

(3).

1. ‘

가



2. ‘

가

(21).

(23).

가 . ,

SPECT

(hypothalamic - pituitary - adrena-

AIDS

laxis, HPA)가

가

. SF - 36

HPA가

가

(22). 가

(prolactin)

가 .

(24). ,

REM 가 . 5 - HIAA(hydroxy indolacetic acid),

(25). arginine vasopressin, 5 - HT(hydroxytryptamine), prolactin

,

가 가

가

가

가

2. (2)(26) (27).

,

,

5~15% (tilting

6 table test, TTT) (28).

,

(neurally

mediated hypotension)

(26%) 96%

TTT .

SPECT(Single - photon emission computed tomo- (limbic system) 가

graphy) ,

(AIDS) .

가 가 ,

가

,

가 . IL - 1
IL - 6, IL - 1 , TGF - 가

3.

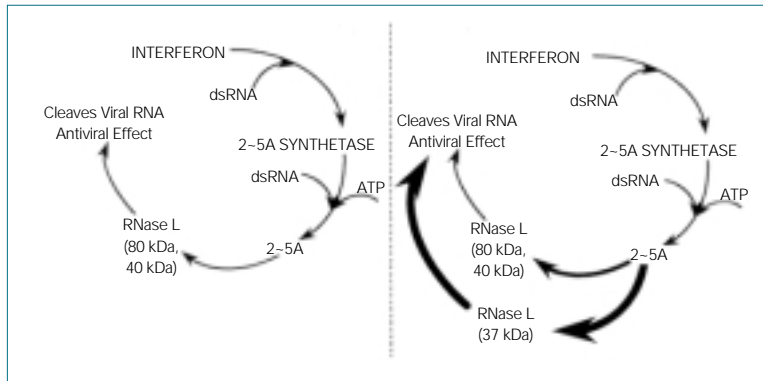
4. 가

가

가
가
CD8+ T 가 가 (29),
(natural killer lymphocytes)
(30). CD4+ /CD8+ , (Lyme) , Q fever
G 가, 가
가 가 .

가 가 .
가 “ - 1(inter-
leukin - 1, IL - 1) (cytokines)
가 ,
” . 가 , candida albicans, mycoplas-
ma, (toxoplasma, giardia)

가 EBV가
가 . Human
herpes virus - 6(HHV - 6)가
HHV - 6
(31), EBV
가
- 가 .



3. 2 - 5A synthetase/RNase L

가 2 - 5A

2 - 5A 가

(33 ~ 35),

RNase L(low molecular weight ;
37kDa) (33 ~ 35),
3)(36).

가

(AIDS) HIV(human immunodeficiency virus)

가

(Borna disease virus)

37kDa RNase L

(32).

가

5. 2 - 5A

2 - 5A

(4)

2 - 5A synthetase/RNase L

(2 - 5A)

가가

2 - 5A 가 2 - 5A synthetase 2 - 5A dependent ribonuclease L(RNase L) , RNase L RNA 가

Chalder
가
(4)(37).



4. Chalder				
가		가		
1.		?		
()1.	()2.	()3.	()4.	
2.		?		
()1.	()2.	()3.	()4.	
3.	?			
()1.	()2.	()3.	()4.	
4.		?		
()1.	()2.	()3.	()4.	
5.			?	
()1.	()2.	()3.	()4.	
6.	(,)	?		
()1.	()2.	()3.	()4.	
7.	()	?		
()1.	()2.	()3.	()4.	
8.	?			
()1.	()2.	()3.	()4.	
9.		?		
()1.	()2.	()3.	()4.	
10.	()	가 ?		
()1.	()2.	()3.	()4.	
11.		가 ?		
()1.	()2.	()3.	()4.	
12.	가	가 ?		
()1.	()2.	()3.	()4.	
13.	?			
()1.	()2.	()3.	()4.	
14.		?		
()1.	()2.	()3.	()4.	

가

가

가

가

가 .

, , (push - crash)

, ,

, ,

가 .

가

가

2. (40 ~ 44)

1)

가

가

(39).

가

(1) Ampligen

Bistranded RNAs

RNA Poly(I).

poly(C12U)(ampligen)

. 92

RCT

ampligen

5 12 5(, , , ,

) ~ 15

가

1 ~ 2

30

ampligen

60%

3

가

가

(2)

가

가

(tricyclic antidepressant, TCA)가
가
가 . , TCA fluoxetine SSRIs
(selective serotonin reuptake inhibitors)
. RCT
, , 가
. ,
, ,
가 ,
가 , TCA(
. 가 10~20mg amitriptyline)가
. 48
. ,
, .
2) .
(1) 1~2
3가 가 . 1
가
가 . TCA doxepin, amitriptyline,
, desipramine, nortriptyline
. , 가, 가
serotonin .
SSRIs .
. SSRI 가
. 가

SSRI . 가 .

가

SSRI .

가 . RCT

SSRI .

fluoxetine, sertraline, paroxetine .

trazodone, bupropion, venlafaxine 3)

(cognitive

(2) Corticosteroid behavioral therapy, CBT)

HPA(hypothalamic - 가

pituitary - adrenocortical)

Addison .

,

. HPA (, ,)

(가

) . ,

. corticosteroid guided imagery,

,

. Hydrocortisone RCT 가 CBT .

1 2

CBT 가 RCT 가

가 , , 가 CBT

,

RCT

5 CBT

Fludrocortisone RCT 가 .

CBT , ,

(3) 가 .

(75).
가
가
가

4)

가
adenosine monophosphate, coenzyme
Q - 10, germanium, glutathione, iron, magnesium
sulfate, melatonin, selenium, l - tryptophan, vita-
min B12, vitamin C, vitamin A, zinc

가

(1) (Magnesium)

,

가
가 RCT

,

,

,

가

(2) Vitamin

,

,

1. Matthews DA, Manus P, Lane TJ. Evaluation and manage-
ment of patients with chronic fatigue. Am J Med Sci 1991 ;
302 : 269 - 77
2. Epstein KR. The chronically fatigued patient. Medical Clinics of
North America 1995 ; 79 : 315 - 27
3. Wessely S, Hotopf M, Sharpe M. Chronic fatigue and its syn-
drome. Oxford ; New York : Oxford University Press, 1998
4. Straus SE. History of chronic fatigue syndrome. Rev Infect Dis
1991 ; 13 : S2 - 7
5. Buchwald D, Sullivan JL, Komaroff AL. Frequency of 'chronic
active Epstein - Barr virus infection' in a general medical prac-
tice. JAMA 1987 ; 257 : 2303 - 7
6. Jones JF, Ray CG, Minnich LL, Hicks MJ, Kibler R, Lucas DO.
Evidence for active Epstein - Barr virus infection in patients
with persistent, unexplained illnesses : elevated anti - early
antigen antibodies. Ann Intern Med 1985 ; 102 : 1 - 7
7. Holmes GP, Kaplan JE, Gantz NM, et al. Chronic Fatigue

- Syndrome : a working case definition. *Ann Intern Med* 1988 ; 108 : 387 - 9
8. Fukuda K, Straus SE, Hickie I, et al. The Chronic Fatigue Syndrome : a comprehensive approach to its definition and study. *Ann Intern Med* 1994 ; 121 : 953 - 9
9. Carruthers BM, Jain AK, Meirleir KL, Peterson DL, Klimas NG, et al. Myalgic encephalomyelitis/Chronic fatigue syndrome : Clinical working case definition, diagnostic and treatment protocols. *Journal of Chronic Fatigue Syndrome* 2003 ; 11 : 7 - 115
10. Lloyd AR. Chronic fatigue and chronic fatigue syndrome : Shifting boundaries and attributions. *Am J Med* 1998 ; 105 : S7 - 10
11. David A, Pelosi A, McDonald E, et al. Tired, weak, or in need of rest : fatigue among general practice attenders. *BMJ* 1990 ; 301 : 1199 - 202
12. . 가 . 가 1993 ; 14 : 833 - 42
13. Jason LA, Richman JA, Rademaker AW, et al. A community - based study of chronic fatigue syndrome. *Arch Intern Med* 1999 ; 159 : 2129 - 37
14. Wessely S, Chalder T, Hirsch S, Wallace P, Wright D. The prevalence and morbidity of chronic fatigue and chronic fatigue syndrome : a prospective primary care study. *Am J Public Health* 1997 ; 87 : 1449 - 55
15. . 가 . 가 2000 ; 21 : 1288 - 98
16. Vercoulen JH, Swanink CM, Fennis JF, Galama JM, van der Meer JW, Bleijenberg G. Dimensional assessment of chronic fatigue syndrome. *J Psychosom Res* 1994 ; 38 : 383 - 92
17. Reyes M, Dobbins JG, Nisenbaum R, Subedar NS, Randall B, Reeves WC. Chronic fatigue syndrome progression and self - defined recovery : evidence from the CDC surveillance system. *J Chronic Fatigue Syndr* 1999 ; 5 : 7 - 17
18. Russo J, Katon W, Clark M, Kith P, Sintay M, Buchwald D. Longitudinal changes associated with improvement in chronic fatigue patients. *J Psychosom Res* 1998 ; 45 : 67 - 76
19. Klonoff DC. Chronic fatigue syndrome. *Clin Infect Dis* 1992 ; 15 : 812 - 23
20. CDC. Chronic fatigue syndrome. Atlanta U.S. DHHS, 1998
21. Powell R, Dolan R, Wessely S. Attributions of self - esteem in depression and chronic fatigue syndromes. *J Psychosom Res* 1990 ; 34 : 665 - 73
22. Demitrack MA, Dale JK, Straus SE, et al. Evidence for impaired activation of the hypothalamic - pituitary - adrenal axis in patients with chronic fatigue syndrome. *J Clin Endocrinol Metab* 1991 ; 73 : 1224 - 34
23. Sharpe M, Clements A, Hawton K, et al. Increased prolactin response to buspirone in chronic fatigue syndrome. *J Affect Disord* 1996 ; 41 : 71 - 6
24. Komaroff AL, Fagioli LR, Doolittle TH, et al. Health status in patients with chronic fatigue syndrome and in general population and disease comparison groups. *Am J Med* 1996 ; 101 : 281 - 90
25. Jason LA, Richman JA, Friedberg F, Wagner L. Politics, science, and the emergence of a new disease : The case of chronic fatigue syndrome. *Am Psychologist* 1997 ; 52 : 973 - 83
26. Evengard B, Schacterle RS, Komaroff AL. Chronic fatigue syndrome : new insights and old ignorance. *J Intern Med* 1999 ; 246 : 455 - 69
27. Johnson SK, Deluca J, Fiedler N, et al. Cognitive functioning of patients with chronic fatigue syndrome. *Clin Infect Dis* 1994 ; 18(Suppl 1) : S84 - 5
28. Freeman R, Komaroff AL. Does the chronic fatigue syndrome involve the autonomic nervous system? *Am J Med* 1997 ; 102 : 357 - 62
29. Landay AL, Jessop C, Lennette ET, et al. Chronic fatigue syndrome : clinical condition associated with immune activation.

- Lancet 1991 ; 338 : 707 - 12
30. Barker E, Fujimura SF, Fadem MB, et al. Immunologic abnormalities associated with chronic fatigue syndrome. Clin Infect Dis 1994 ; 18(Suppl 1) : S136 - 41
 31. Patnaik M, Komaroff AL, Conley E, et al. Prevalence to IgM antibodies to human herpes virus 6 early antigen(p41/38) in patients with chronic fatigue syndrome. J Infect Dis 1995 ; 172 : 1364 - 7
 32. Dobbins JG, Lipkin WI, Even C, et al. Borna disease virus in the Atlanta CFS case - control study. J Chron Fatigue Syn 1996 ; 2 : 82 - 3
 33. Suhadolnik RJ, Reichenbach NL, Hitzges P, et al. Upregulation of the 2 - 5A synthetase/RNase L antiviral pathway associated with chronic fatigue syndrome. Clin Infect Dis 1994 ; 18(Suppl 1) : S96 - 104
 34. Suhadolnik RJ, Peterson DL, O'Brien K, et al. Further evidence for biochemical defects in the 2 - 5A synthetase/RNase L and PKR pathway in chronic fatigue syndrome. J Chron Fatigue Syn 1996 ; 2 : 123
 35. Suhadolnik RJ, Peterson DL, O'Brien K, et al. Biochemical evidence for a novel molecular weight 2 - 5A dependent RNase L in chronic fatigue syndrome. J Interferon Cytokine Res 1997 ; 17 : 377 - 85
 36. Komaroff AL. The biology of chronic fatigue syndrome. Am J Med 2000 ; 108 : 169 - 71
 37. Chalder T, Berelowitz G, Pawlikowska T, et al. Development of a fatigue scale. J Psychosom Res 1993 ; 17 : 147 - 53
 38. NIAID. Chronic fatigue syndrome. Information for physicians. Atlanta U.S. DHHS, 1996
 39. Fulcher KY, White PD. Randomized controlled trial of graded exercise in patients with the chronic fatigue syndrome. BMJ 1996 ; 314 : 1647 - 52
 40. Depart of Health(UK). A report of the CFS/ME working group : Report to the Chief Medical Officer of an independent working group. 2002
 41. AHRQ Publication No. 02 - E001. Evidence report/technology assessment No. 42 : Defining and managing chronic fatigue syndrome. 2001
 42. Bagnall AM, Whiting P, Wright K, Sowden AJ. The effectiveness of interventions used in the treatment/management of chronic fatigue syndrome and/or myalgic encephalomyelitis in adults and children. The NHS Centre for Reviews and Dissemination. York : University of York, 2001
 43. Whiting P, Bagnall AM, Sowden AJ, Cornell JE, Mulrow CD, Ramirez G. Interventions for the treatment and management of chronic fatigue syndrome : A systematic review. JAMA 2001 ; 286 : 1360 - 8
 44. Veterans Health Administration, Depart of Defence. VHA/DoD clinical practice guideline for the management of medical unexplained symptoms : chronic pain and fatigue Version 1.0. 2002