

# 국가방사선비상진료체계 및 관련 연구분야

## National System of Medical Assistance for Radiation Emergencies and Relevant Researches

2 215 - 4

Sang Moo Lim, M.D.

Department of Nuclear Medicine

Korea Cancer Center Hospital

E - mail : smlim328@kcch.re.kr

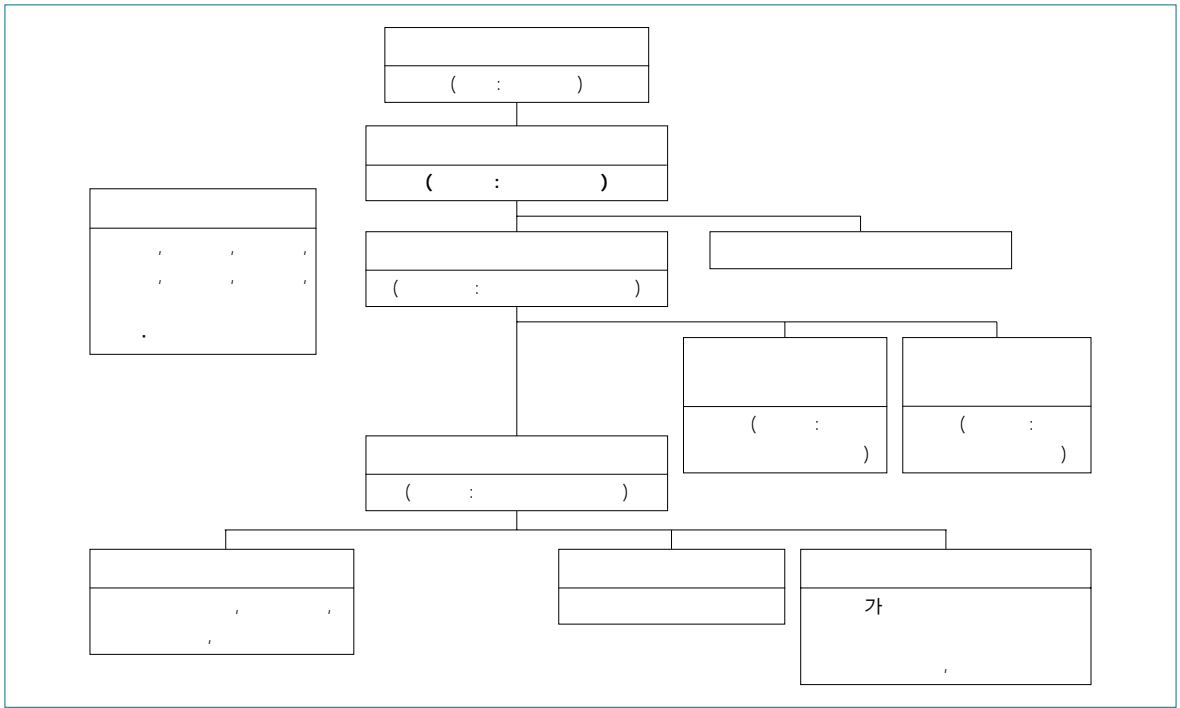
### Abstract

Korea has advanced nuclear and radioisotope industry, and it is urgent to establish a national system to countermeasure the radiation accidents and preparedness for radiation emergency medical management. The Government opened the National Radiation Emergency Medical Center (NREMC) in the Korea Institute of Radiological and Medical Sciences (KIRAMS) in 2002, and the NREMC is setting up a radiation emergency medical preparedness and assistance network in nationwide. On April 30, 2003 the special law was proposed for the physical protection of nuclear facilities and emergency response against radiological accidents, which includes medical preparedness and management. Detailed guidelines for this law is being prepared by the Ministry of Science and Technology (MOST), and will be take effect in February 2004. Per this guideline, regional emergency medical centers will be appointed by the MOST, and the NREMC will operate this national system including education of the medical personnel.

**Keywords :** National System of Medical Assistance for Radiation Emergencies; Radiation emergency medical care; Radiation accident

: 가 ; ;

18 가가  
40%  
,  
(1). RI 가  
2003 RI 가 2,000  
. 가 ,  
가 (1),  
가  
(1997) “ 가  
”  
(2), (2001) “  
”  
(3)  
2002 ,  
가



1. 가

가

가

가

가

2003 4 30 ,

가

가

(

)

1. 가

(

「

」

「

,

가

」

(1).

2003 4 30

가

「

」

1

1, 2, 3, 가, 39 (가)

가

1 가

14

32 ( ) 가 ( “ ” )

1 2

( “ ” ) ( ) (4)

35 ( )

14 36 1

( “ ” )

36 ( )

1. ( “ ” )

2. ( “ ” )

36 1

39 2 1 2

( “ ” )

3.1 2

36 1

( “ ” )

( “ ” )

36 ( )

1 , 가

37( ) .

• , • • 1

• ,

11 10

39 3

30

 $\gamma_1, \gamma_2$ 

4, 1 2

40 ( 가 )

39 1 가

39 3

 $\gamma_1, \gamma_2$ 

( “ ” )

가

가 .

1      2

8 ( )  
가 , 가 가 7  
(5).  
가  
2. 가 가  
Network (1).  
, ( , 1) 3 : 가 ,  
가, 가),  
,  
,  
- Network , 가  
,  
가 가  
,  
,  
,  
,  
,  
3  
3) 1 : .  
3. 가  
, 가  
가 가  
가 . 가 2  
4. 가  
1) .  
( , ,

) , , ( , ), 119

2.

, (rh IL - 11, TGF3, KGF) 가 .

3.

2) (Isolation Ward)

가

4.

가

가

가

가

가

가

가

bioassay,

1.

5.

가

가

가

(peripheral

blood lymphocyte)

FISH (6)

가

가

4

6.

1

