

# 유방 성형

## Plastic Surgery of the Breast

80 - 4 B/D
Keuk Shun Shin, M.D.
Keuk - SHUN SHIN's Asthetic Plastic Surgery
E - mail: drsks@drsks.co.kr

(Augmentation of Breast)

1. ?

( )

### Abstract

Plastic surgery of the breast includes; augmentation, reduction, reconstruction of the breast and correction of inverted nipples. For breast augmentation I herein introduce a technique of augmentation while preventing the occurrence of capsular contracture. For reduction surgery, I emphasize a short scar, preservation of nipple sensation and lactation. For reconstruction I suggest that a general surgeon should have a keen interest in reconstruction after mastectomy for better outcomes and improvement in quality of life of the patient. Finally I discuss correction surgery for inverted nipples, which is a challenging field in breast surgery because of its high recurrence rate and possibility of compromised breast - feeding after surgery.

**Keywords :** Augmentation of breast;

Reduction of breast;

Reconstruction of breast;

Correction of inverted nipples

: ; ; ;

2.

가

, 가

가 가



1.



2.

( )

가  
가  
(2 cm ) 가  
,  
가  
(8),  
가  
(5, 7)( 1).

, 가 ( )  
(6).

가 1 ( 2).

4.

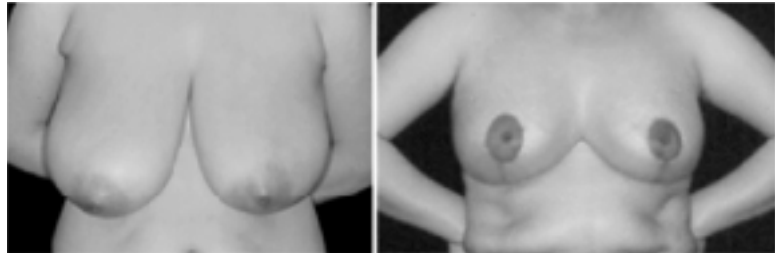
(capsule)

가 (1, 2). 가  
2

1 가

3.

가



3.

( )

(4).

가

가

가

5.

(capsule)

가

가,

( 3).

(subclinical infection )(3, 9),

1 ~10

가

2.

?

(Reduction Mammoplasty)

가

1.

?

가

가 (13, 16).

.가

3.

가?

4~5

가

가

가



4.

4.

가

,

•

.1

,

5.

가 가?

3

가

. 2 가

가

•

1

가

가 가

가

가

371

가

가

1)

(Vertical Pedicle Technique)

pedicle

(15).

2)

(Inferior Pedicle Technique)

가

1)

(11, 12).

3)

(Central Mound Technique)

가

3

, 가 ,

가 가

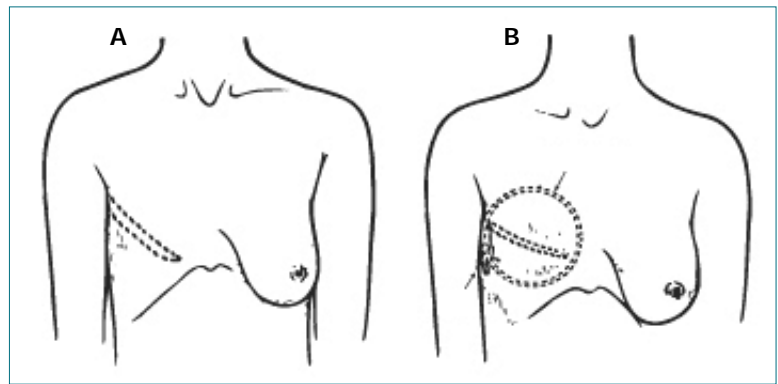
(10, 14,

17)( 4).

6 ;

(Reconstruction of Breast)

가



A)  
B)

1.

5.

3가

가

(23, 25)



6.

(

)

가

가

(19)

가

가

가

가

( 7, 8).

가

1

8~10

(24)

가

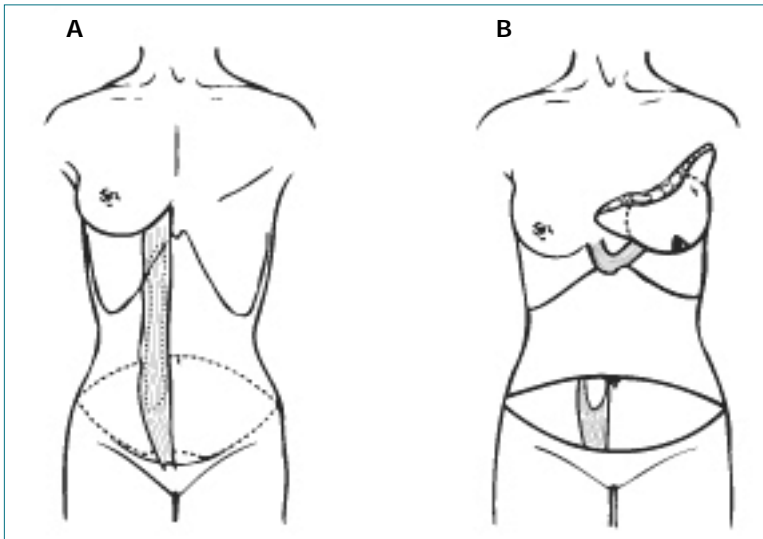
1.5 가

( 5, 6).

가

(18, 20, 27, 28)

가



A)

B)

가

7.



8.



(21, 26).

2.

가

2.

(31).

가

(22).

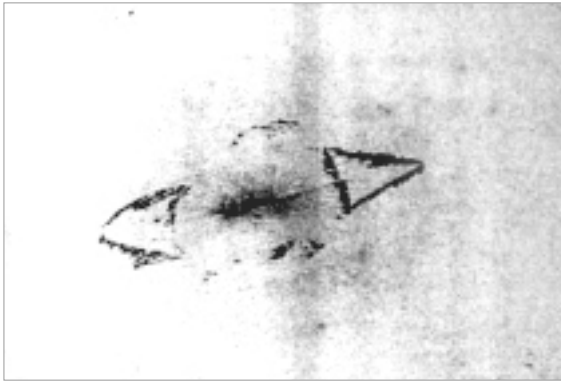
(Correction of Inverted Nipple)

1. ?

(sex organ)

가

(29).



9. 3, 9

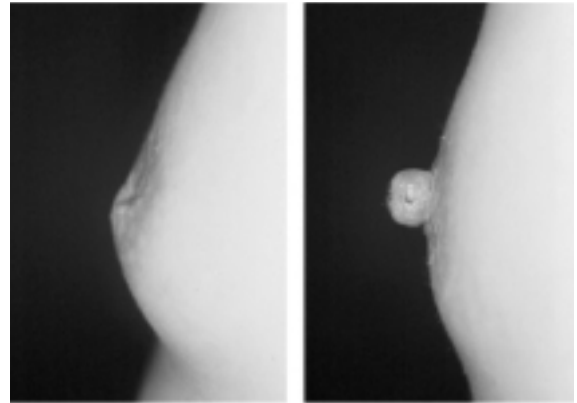
9 3, 9

가

Teimourian

(30, 32)( 10).

1. Baker JL Jr. Classification of spherical contractures. Presented at the Aesthetic Breast Symposium, Scottsdale, Arizona, 1975
2. Barker DE, Retsky MI, Schultz S. "Bleeding" of silicone from bag - gel breast implants and its clinical relation to fibrous capsule reaction. *Plast Reconstr Surg* 1978 ; 61 : 836
3. Burkhardt BR, Fried M, Schnur PL, Tofield JJ. Capsules, infection, and intraluminal antibiotics. *Plast Reconstr Surg* 1981 ; 68(1) : 43 - 9
4. Courtiss EH, Goldwyn RM. Breast sensation before and after plastic surgery. *Plast Reconstr Surg* 1976 ; 58 : 1
5. Cronin TD. The voice of polite dissent "Augmentation mammoplasty by the transaxillary approach" by JH Wright and AG Bevin. *Plast Reconstr Surg* 1976 ; 58 : 621



10. ( )

6. Dempsey WC, Latham WD. Subpectoral implants in augmentation mammoplasty : Preliminary report. *Plast Reconstr Surg* 1968 ; 42 : 515
7. Hoehler H. Breast augmentation : The axillary approach. *Br J Plast Surg* 1973 ; 26 : 373
8. Jones FR, Tauras AP. A periareolar incision for augmentation mammoplasty. *Plast Reconstr Surg* 1973 ; 51 : 641
9. Shah Z, Lehman JA Jr, Tan J. Does infection play a role in breast capsular contracture? *Plast Reconstr Surg* 1981 ; 68 : 34
10. Blach C. The central mound technique for reduction mammoplasty. *Plast Reconstr Surg* 1981 ; 67 : 305
11. Courtiss E, Goldwyn RM. Reduction mammoplasty by the inferior pedicle technique. *Plast Reconstr Surg* 1977 ; 59 : 500
12. Georgiade NG, Serafin D, Morris R, Georgiade G. Reduction mammoplasty utilizing an inferior pedicle nippleareola flap. *Ann Plast Surg* 1979 ; 3(3) : 211 - 8
13. Hatten M, Keleher C. Breast feeding after reduction mammoplasty. *J Nurs Midwif* 1983 ; 28 : 19
14. T. Roderick Hester Jr, John Bostwick , Leonard Miller, Sally J Cunningham. Breast reduction utilizing the maximally vascularized central breast pedicle. *Plast Reconstr Surg* 1985 ; 76 : 890
15. McKissock PK. Reduction mammoplasty with a vertical der-

- mal flap. *Plast Reconstr Surg* 1972 ; 49 : 245
16. Shin KS, Lee HK. Reduction mammoplasty with the short submammary scar(S - S - S) technique. *Aesthetic Plast Surg* 1992 ; 16 : 109
  17. . . . . 1992 ; 19 : 5
  18. Beegle PH, Hartrampf CR. Microvascular augmentation of the transverse abdominal flap in chest wall reconstruction. Presented at the Annual Scientific Meeting of the American Society of Plastic and Reconstructive Surgeons, Los Angeles, October 1986
  19. Cohen BB, Cronin ED. Breast reconstruction with the latissimus dorsi musculocutaneous flap. *Clin Plast Surg* 1984 ; 11 : 287
  20. Drever JM. The lower abdominal transverse rectus abdominis myocutaneous flap for breast reconstruction. *Ann Plast Surg* 1983 ; 10 : 179
  21. Little JW, Spear SL. The finishing touches in nipple areola reconstruction. *Perspect Plast Surg* 1988 ; 2 : 1
  22. Morris T, Greer S, White P. Psychosocial and sexual adjustment to mastectomy : A two - year follow - up study. *Cancer* 1979 ; 40 : 2381
  23. Radovan C. Breast reconstruction after mastectomy using the temporary expander. *Plast Reconstr Surg* 1982 ; 69 : 195
  24. Shaw WW. Breast reconstruction by superior gluteal microvascular free flaps without silicone implants. *Plast Reconstr Surg* 1983 ; 72 : 490
  25. . . . . 1990 ; 17 : 6
  26. . . . . 1984 ; 11 : 4
  27. . . . . 1992 ; 19 : 3
  28. . . . . 1989 ; 16 : 6
  29. Cooper A. *The Anatomy of the Breast*. London : Longman, 1840
  30. Teimourian B, Adham MN. Simple technique for correction of inverted nipple. *Plast Reconstr Surg* 1980 ; 65 : 504
  31. Broadbent TR, Woolf RM. Benign inverted nipple, transnipple - areolar correction. *Plast Reconstr Surg* 1976 ; 58 : 673
  32. . . . . Teimourian . . . . . 1994 ; 21 : 5