

세균성 이질

Bacillary Dysentery

17

Hyunjoo Pai, M.D.

Department of Internal Medicine

Hanyang University College of Medicine & Hospital

E-mail : paihj@unitel.co.kr

Abstract

Bacillary dysentery is still an important food - borne infection worldwide. Because a small inoculum can establish the infection, contact, food, and water are the usual transmission route. Abdominal pain and diarrhea are the early symptoms, followed by bloody and mucoid stool and tenesmus. Although the diagnosis of shigellosis is based on the stool culture, diarrhea with general symptoms persisting for several days and intrafamilial spread suggest the shigellosis. The high resistance rate against the first - line antimicrobials is a serious social problem in developing countries. In countries showing a high resistance rate of trimethoprim - sulfamethoxazole or ampicillin, including Korea, the treatment choice for shigellosis is fluoroquinolone for 3 days in adults. In Korea, there has been a dramatic increase of shigellosis from 1998. *Shigella sonnei* is the most common pathogen, and *S. flexneri* has been isolated continuously in a small number. Analyzing the incidence by age and provinces, the infection occurred most frequently in the age group under twenties, and Cheju, Gyeongnam, Chonnam, and Kangwon show the high incidence rate of shigellosis. Although seasonal variation of shigellosis was influenced by regional outbreaks, the infection occurred most commonly in late spring and early autumn. The resistance rate of trimethoprim - sulfamethoxazole was very high, over 90%, but ampicillin resistance varied widely according to the epidemics or regions. The analyses of several epidemics of shigellosis from 1998 to 2000 indicate that the school lunch program is the most important cause for the recent increase of shigellosis in Korea. The strict regulation of mass food handling is critical for the control of shigellosis.

Keywords : Shigellosis; Epidemic; Antimicrobial resistance

: ; ;

1990

가 1998

가

Shigella

. Shigella (Enterobacteriaceae family)

가

S. sonnei, *S. boydii*, *S. flexneri*,
S. dysenteriae

1. . 가 ,
가 .
10% 10 , , .

famethoxazole(TMP - SMX) 160/800 mg po bid가

. TMP - SMX

TMP - SMX

ciprofloxacin 500 mg po bid, norfloxacin 400 mg
po bid ofloxacin 300 mg po bid 3~5

, nalidixic acid . 2000

, TMP - SMX,

nalidixic acid 73%, 93%, 26%

가 .

fluoroquinolone ,

ampicillin - sulbactam, ampicillin - clavulanic acid

ceftriaxone

ampicillin - sulbactam

amoxicillin - clavulanic acid

1.

30%

(1). 1970 860

가

1990

1998

가 (*S. dysenteriae*,

S. flexnerii)

2

1,781

2,454

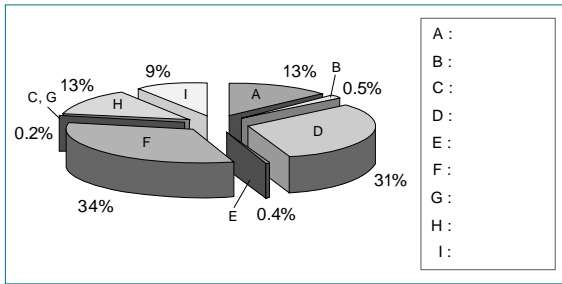
. 2001

. Trimethoprim - sul-

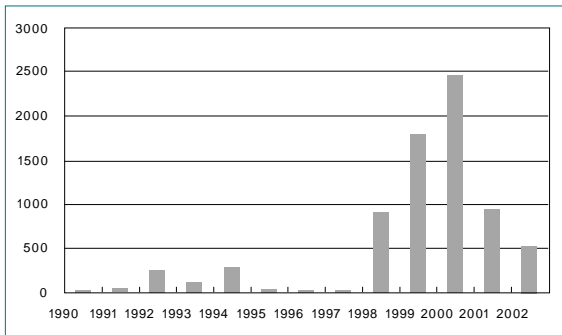
2001

2002

927 , 507



1. 2001



2.

가 1998

가

가 (2).

1. 1999~2000

	1999		2000	
	(%)		(%)	
0~9	438	29	438	29
10~19	662	44	662	44
20~29	43	2.8	43	2.8
30~39	81	5.4	81	5.4
40~49	53	3.5	53	3.5
50~59	66	4.4	104	5.0
60~69	90	6.0	147	7.1
70	79	5.2	111	5.4

1998 1999 10 0, 2.62
2000 306.8

1999 , 2000 10
가 29%, 45%, 10 ~ 19 가
44%, 20% 20

(1).

3.

1
가 . 1998
1999 9 10 가 가
2000 5~6 10 가

4.

1999 2000
() ,

2. 2000

Shigella sonnei

Ampicillin(AM)	89	9	64	87	54	50	46	29	73
Amikacin(AN)	0	0	0	0	0	0	9.1	0	0.1
Ampicillin/Sulbactam(SAM)	76	5	0	0	0	25	0	0	53
Cephalothin(CF)	1.6	0	0	13	19	0	27	14	2.5
Chloramphenicol(C)	0.1	0	0	22	35	0	0	14	2.3
Ciprofloxacin(CIP)	0	0	0	0	0	0	0	0	0
Ceftriazone(CRO)	0.3	0	0	2.6	0	0	0	0	0.3
Cefoxitin(FOX)	0.7	0	0	0	0	0	0	0	0.5
Gentamicin(GM)	1.6	0.7	0	2.6	12	0	18	0	1.8
Kanamycin(K)	83	8	0	58	3.8	50	27	14	62
Nalidixic acid(NA)	0.4	83	88	71	96	75	55	57	26
Streptomycin(S)	65	66	71	66	100	100	55	43	66
Trimetho prim/sulfa me thoxazole(SXT)	96	84	96	90	85	100	91	100	93
Ticarcillin(TIC)	93	8.7	64	90	27	50	46	29	75
Tetracycline(TE)	98	92	99	97	92	100	91	100	97
Amoxicillin/Clavulanic acid(AMC)	88	5.3	0	0	0	25	9.1	0	62
	687	149	70	38	26	12	11	7	1,000

fluoro-quinolone , ampicillin/sulbactam, ampicillin/clavulanic acid ceftriazone

가 10 7, 8

5.

2 2000

Shigella

sonnei

ampicillin, TMP - SMX

TMP - SMX

nalidixic acid

가가

1. . , In : :
- . 2002 ,
, 2002
2. . .
2001
3. . .
, 2001
4. , .
, 2000
5. . 1999 ; 42 : 637 - 40
6. Kim JD, Pai H, Byeon J, Yu S, Kim Y, Shin K, et al. Characteri-
zation of *Shigella sonnei* isolates from the outbreak at Cheju
Island in 2000. Abstract 10. 2002 ,
7. Pai H, Lee HJ, Choi EH, Kim J, Jacoby GA. Identifica-tion of
CTX - M - 14 extended - spectrum beta - lactamase in clini-
cal isolates of *Shigella sonnei*, *Escherichia coli*, and *Kleb-siella*
pneumoniae in Korea. J Clin Microbiol 2001 ; 39(10) : 3747 - 9
8. DuPont HL. Shigella species (Bacillary dysentery). In : Mandell
GL, Bennett JE, Dolin R. Principles and practice of infectious
diseases. 4thed. P2033 - 2039, Churchill Livingstone Co.,
1995
9. Subekti D, Oyofa BA, Tjaniadi P, Corwin AL, Larasati W, Putvi
M, et al. Shigella spp. Surveillance in Indonesia : the emergen-
ce or reemergence of *S. dysenteriae*. Emerg Infect Dis 2001 ;
7 : 137 - 40
10. Isenberg DW, Hoge CW, Srijan AS, Pitarangsi C, Vithayasai N,
Bodhidatta L, et al. Comparative antibiotic resistance of diar-
rheal pathogens from Vietnam and Thailand, 1996 - 1999.
Emerg Infect Dis 2002 ; 8 : 175 - 80