

:
 : 1996 4 2000 12 932
 440 (428)
 ,
 ,
 43.9
 0.3 - 3 cm 0.9 cm . 440 197 16
 243 14
 : 53 , 7 , 4
 , 4 (2 , 2) 372 (84.5%)
 . 53 45 가 44
 1
 11 4 2 가
 372 49
 1 5 (8.3%) 6
 . 6 16
 가 4 12%, 14 가 2 5.1%
 ($p=0.26$).
 :

가 (underestimation) 가 (9 - 11)
 가
 (medical audit)
 (1 - 4). 가
 (localization) 가 18
 가 70% (7, 8).
 , 1996
 (1, 2, 5, 6).
 가
 (7, 8).

(428) . 43.9
 (21 - 74), 0.3 cm 3 cm (0.9 cm)
 (automated biopsy gun. Promac 2.2,
 Manan, U.S.A.) 2.2 cm long through needle
 2000 2 197 16 , 2000
 3 243 14 가 가
 5 3-4 ,
 7-8 .
 HDI 3000(ATL, Bothell, U.S.A.) Diasonic spec-
 tra(GE medical systems, Wisconsin, U.S.A.)
 4
 . 428 311
 8 5 4 21
 440
 14 16 ,
 가
 Fisher's exact test
 440
 1 .
 53 45
 가 1
 8
 4 가 4
 가
 가 7 4

:
 , 3 43%(3/7) 가
 (DCIS underestimation)가
 가 4 2
 2
 50%
 가(ADH underestimation)
 2 , 2 가
 372 (Fig.1),
 49
 (29), (16),
 (4) 49
 43

Table 1. Comparison of Core Biopsy Result and Operation Result

Core Biopsy		Operation	
Result	No. of Case(%)	Result	No. of Case(%)
Benign	372(84.5%)	Benign	43
		DCIS	1 49
		IDC	5
ADH	4(0.9%)	ADH	2 4
		IDC	2
DCIS	7(1.6%)	DCIS	4 7
		IDC 3	
IDC	53(12%)	IDC	44 45
		NR	1
Other malignancy	4(0.9%)		
Total	440		105

ADH: atypical ductal hyperplasia
 DCIS: ductal carcinoma in situ
 IDC: invasive ductal carcinoma
 NR: no residual tumor
 Other malignancy: lymphoma(n = 2), metastasis(n = 2)

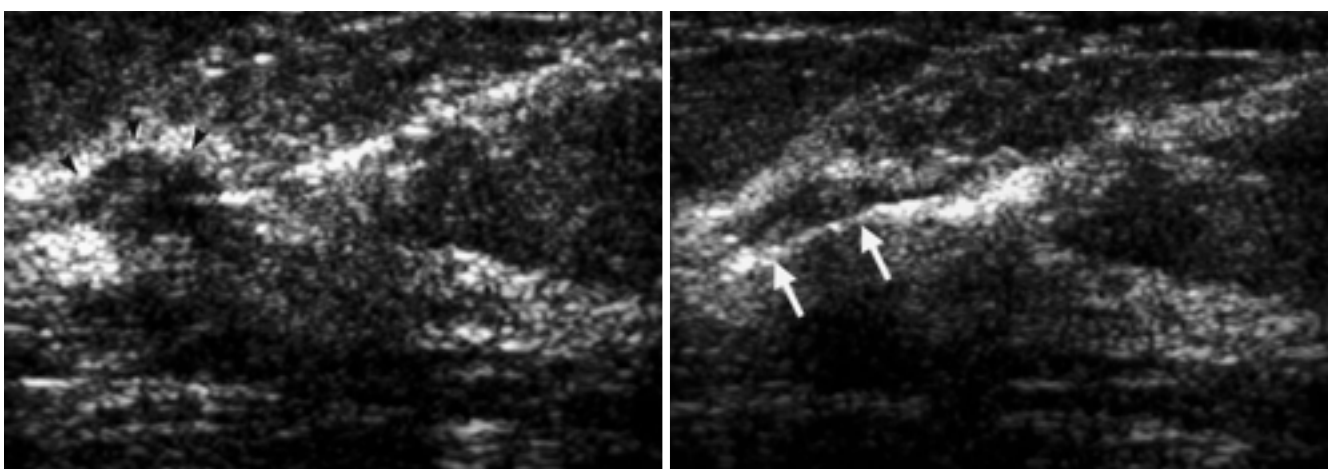


Fig. 1. 41-year-old woman without clinical symptom. US shows slightly hypoechoic, microlobulated, ovoid shaped nodule (arrows heads). US-guided core biopsy before (A) and after (B) firing shows that echogenic needle(arrows) was passed within nodule and diagnosed as fibrosis, which was considered as concordant result. On US after six-month(not shown), the nodule decreased in size.

6 8.3% (6/72) 가 4 (12%)
 (stromal fibrosis) 3 , (ductal epithelial hyper - (Fisher's exact test, p - value=0.26).
 plasia) 2 , (adenomatous hyperplasia) 1 21 (8 - 5 4) 323
 category 4 1.2 cm
 0.9 cm
 (Fig. 2) 6 4
 2 6
 가 (Fig. 3). 가
 6 14 가 2 (5.1%), 16 (1 - 4).

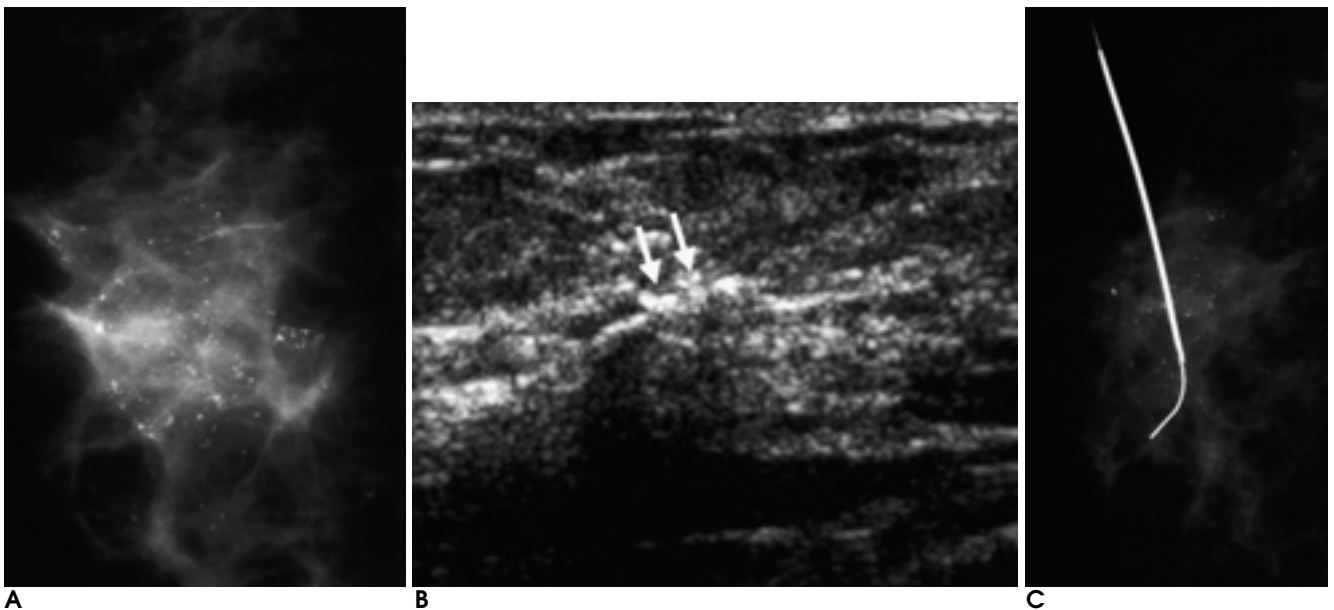


Fig. 2. 50-year-old woman was found to have suspicious microcalcification on screening mammogram (A). On sonogram, only spotty calcifications (arrows) were visible without definite mass and core biopsy was done targeting on calcification up to 8 times (B). Ductal epithelial hyperplasia was diagnosed on pathology. So mammogram-guided localization biopsy was done and it proved to be ductal carcinoma in situ (C).

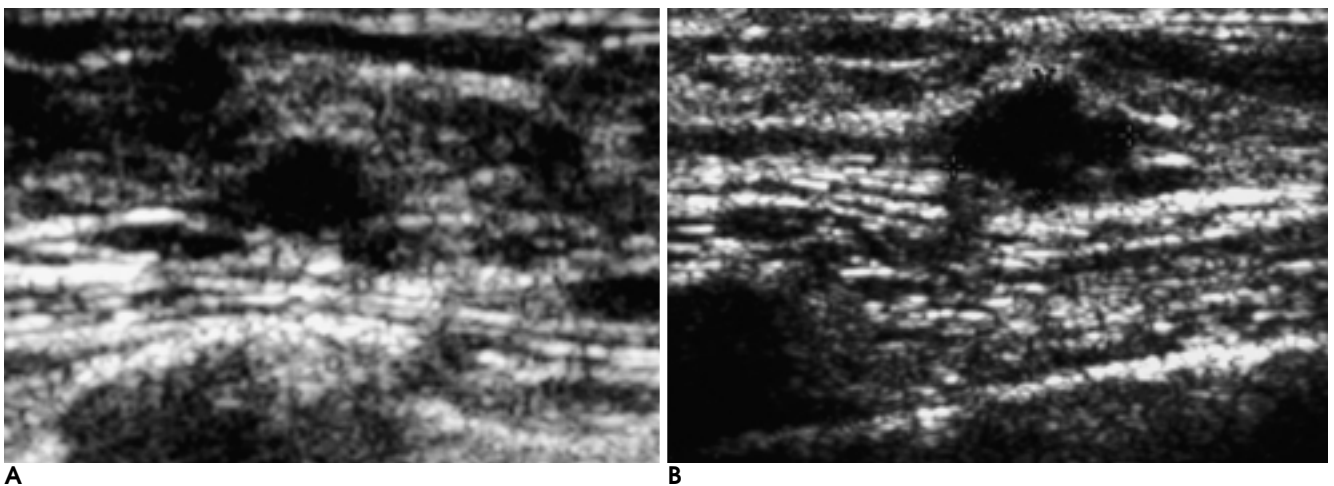


Fig. 3. 53-year-old woman with incidentally found breast nodule was diagnosed as fibrosis on core biopsy (A) and it was regarded as concordant result. But after 6 months, the nodule increased in size (B) and repeated biopsy revealed invasive ductal carcinoma.

13) (stereotactic) (12, 14) 가가 16 - 35%(5,25 - 28) 가가 20 - 56% (7, 8). (5,11,25, 29 - 32). 16 가 (12, 14, 15) 11 가가 3 (43%) . 14 가가 2 (50%), (vacuum assisted biopsy) 0 - 38% 가(25, 30 - 33) 16 - 35% 가가 (13, 25, 27, 28, 34) (Fig. 2). (specimen mammo - gram) 14 16 가 (17). 14 16 가 (18). 14 16 가 (19, 20). 가(under - estimation) . 14 2.8%(0.3 - 8.2%) 30% 가 70% (21, 22). 5%(2) 14 2 16 2 (33.3%) 6 6 가 (23). 가 가 (16) 가 가 (24)

1. Elvecrog EL, Lechner MC, Nelson MT. Nonpalpable breast lesions: Correlation of stereotaxic large-core needle biopsy and surgical biopsy results. *Radiology* 1993;188:453-455
2. Gisvold JJ, Goellner JR, Grant CS, et al. Breast biopsy: A comparative study of stereotaxically guided core and excisional techniques. *AJR Am J Roentgenol* 1994;162:815-820
3. Parker SH, Burbank F, Jackman RJ, et al. Percutaneous large-core breast biopsy: A multi-institutional study. *Radiology* 1994;193:359-364
4. Parker SH, Jobe WE, Dennis MA, et al. US-guided automated large-core breast biopsy. *Radiology* 1993;187:507-511
5. Jackman RJ, Nowels KW, Shepard MJ, Finkelstein SI, Marzoni FA. Stereotaxic large-core needle biopsy of 450 nonpalpable breast lesions with surgical correlation in lesions with cancer or atypical hyperplasia. *Radiology* 1994;193:91-95
6. Parker SH, Lovin JD, Jobe WE, Burke BJ, Hopper KD, Yakes WF. Nonpalpable breast lesions: stereotactic automated large-core biopsies. *Radiology* 1991;180:403-407
7. , , . 1997;37:943-947
8. , , 가 . 1994;13: 211-216
9. Burbank F, Parker SH. *Methods for evaluating the quality of an imaging-guided breast biopsy program*. In: Parker SH, ed. *Interventional breast procedures*. In: Feig SA, ed. *Seminars in breast disease*, vol. 1, no. 2. Philadelphia: Saunders, 1998:1:71-83
10. Liberman L, Cohen MA, Dershaw DD, Abramson AF, Hann LE, Rosen PP. Atypical ductal hyperplasia diagnosed at stereotaxic core biopsy of breast lesions: an indication for surgical biopsy. *AJR Am J Roentgenol* 1995;164:1111-1113
11. Liberman L, Dershaw DD, Glassman J, et al. Analysis of cancers not diagnosed at stereotactic core breast biopsy. *Radiology* 1997; 203:151-157
12. Rubin E, Dempsey PJ, Pile NS, et al. Needle-localization biopsy of the breast: impact of a selective core needle biopsy program on yield. *Radiology* 1995;195:627-631
13. Meyer JE, Smith DN, Lester SC, et al. Large core needle biopsy of

- nonpalpable breast lesions. *JAMA* 1999;281:1638-1641
14. Parker SH, Jobe WE, Dennis MA, et al. US-guided automated large-core breast biopsy. *Radiology* 1993;187:507-511
 15. Liberman L, Feng TL, Dershaw DD, Morris EA, Abramson AF. Ultrasound-guided core breast biopsy: utility and cost-effectiveness. *Radiology* 1998;208:717-723
 16. Liberman L, Evans WP, Dershaw DD, et al. Specimen radiography of microcalcifications in stereotaxic mammary core biopsy specimens. *Radiology* 1994;190:223-225
 17. Helbich TH, Rudas M, Haitel A, et al. Evaluation of needle size for breast biopsy: Comparison of 14-, 16-, 18-gauge biopsy needles. *AJR Am J Roentgenol* 1998;171:59-63
 18. Liberman L, LaTrenta LR, Dershaw DD. Impact of core biopsy on the surgical management of impalpable breast cancer: Another look at margins (letter). *AJR Am J Roentgenol* 1997;169:1464-1465
 19. Jackman RJ, Marzoni FA, Finkelstein SI, Shepard MJ. Benefits of diagnosing nonpalpable breast cancer with stereotactic large-core needle biopsy: Lower costs and fewer operations (abstr). *Radiology* 1996;201(P):311
 20. Lindfors KK, Rosenquist CJ. Needle core biopsy guided with mammography: A study of cost effectiveness. *Radiology* 1994;190:217-222
 21. Jackman RJ, Nowels KW, Rodriguez-Soto J, Marzoni FA, Finkelstein SI, Shepard MJ. Stereotactic, automated, large-core needle biopsy of nonpalpable breast lesions: False-negative and histologic underestimation rates after long-term follow-up. *Radiology* 1999;210:799-805
 22. Lee CH, Philpotts LE, Horvath LJ, Tocino I. Follow-up of breast lesions diagnosed as benign with stereotactic core-needle biopsy: Frequency of mammographic change and false-negative rate. *Radiology* 1999;212:189-194
 23. Liberman L, Dershaw DD, Glassman J, et al. Analysis of cancers not diagnosed at stereotactic core breast biopsy. *Radiology* 1997;203:151-157
 24. Burbank F, Parker SH. *Methods for evaluating the quality of an imaging-guided breast biopsy program*. In: Parker SH, ed. *Interventional breast procedures*. In: Feig SA, ed. *Seminars in breast disease*, vol. 1, no. 2. Philadelphia: Saunders, 1998;1:71-83
 25. Burbank F. Stereotactic breast biopsy of atypical ductal hyperplasia and ductal carcinoma in situ lesions: improved accuracy with a directional, vacuum-assisted biopsy instrument. *Radiology* 1997;202:843-847
 26. Liberman L, Dershaw DD, Rosen PP, et al. Stereotaxic core biopsy of breast carcinoma: Accuracy at predicting invasion. *Radiology* 1995;194:379-381
 27. Jackman RJ, Burbank FH, Parker SH, et al. Accuracy of sampling ductal carcinoma in situ by three stereotactic breast biopsy methods (abstr). *Radiology* 1998;209(P):197-198
 28. Won B, Reynolds HE, Lazaridis CL, Jackson VP. Stereotactic biopsy of ductal carcinoma in situ of the breast using an 11-gauge vacuum-assisted device: Persistent underestimation of disease. *AJR Am J Roentgenol* 1999;173:227-229
 29. Liberman L, Cohen MA, Dershaw DD, Abramson AF, Hann LE, Rosen PP. Atypical ductal hyperplasia diagnosed at stereotaxic core biopsy of breast lesions: an indication for surgical biopsy. *AJR Am J Roentgenol* 1995;164:1111-1113
 30. Jackman RJ, Burbank F, Parker SH, et al. Atypical ductal hyperplasia diagnosed at stereotactic breast biopsy: Improved reliability with 14-gauge, directional, vacuum-assisted biopsy. *Radiology* 1997;204:485-488
 31. Jackman RJ, Burbank FH, Parker SH, et al. Atypical ductal hyperplasia diagnosed by 11-gauge, directional, vacuum-assisted breast biopsy: How often is carcinoma found at surgery? (abstr). *Radiology* 1997;205(P):325
 32. Philpotts LE, Shaheen NA, Carter D, Lange RC, Lee CH. Comparison of rebiopsy rates after stereotactic core needle biopsy of the breast with 11-gauge vacuum suction probe versus 14-gauge needle and automatic gun. *AJR Am J Roentgenol* 1999;172:683-687
 33. Brem RF, Behrndt VS, Sanow L, Gatewood OMB. Atypical ductal hyperplasia: Histologic underestimation of carcinoma in tissue harvested from impalpable breast lesions using 11-gauge stereotactically guided directional vacuum-assisted biopsy. *AJR Am J Roentgenol* 1999;172:1405-1407
 34. Liberman L, Vuolo M, Dershaw DD, et al. Epithelial displacement after stereotactic 11-gauge directional vacuum-assisted breast biopsy. *AJR Am J Roentgenol* 1999;172:677-681

The Usefulness of Ultrasound-Guided Core Needle Biopsy for Non-Palpable Breast Lesion¹

Jai Kyung You, M.D., Eun-Kyung Kim, M.D., Mi Hye Kim, M.D.², Jin-Young Kwak, M.D.,
Ki Keun Oh, M.D., Byung Woo Park, M.D.³, Kyong Sik Lee, M.D.³

¹Department of Diagnostic Radiology, Yonsei University College of Medicine

²Department of Diagnostic Radiology, Miz Medi Hospital

³Department of General Surgery, Yonsei University College of Medicine

Purpose: To determine the usefulness of ultrasound-guided core biopsy for the diagnosis of non-palpable breast lesions.

Materials and Methods: Between April 1996 and December 2000, 932 lesions in 901 patients were the object of ultrasound-guided core biopsy. Of these, 440 non-palpable lesions ranging in size from 0.3 to 3.0 (average, 0.9)cm, and found in 428 patients (all women aged, on average, 43.9 years), were included in this study. The pathologic results of core biopsy were compared with the available surgical data, and clinical and radiologic follow-up data were also reviewed. A 16-gauge needle was used in 197 lesions, and a 14-gauge needle in the other 243.

Results: At core biopsy, 53 lesions were diagnosed as invasive carcinoma, and 45 of these were excised. Forty-four were confirmed as invasive carcinoma, and in one case there was no residual tumor. Seven lesions, diagnosed as ductal carcinoma in situ at core biopsy, were surgically removed, and the final diagnosis was ductal carcinoma in four cases and invasive carcinoma in two. Two of four cases initially diagnosed as atypical ductal hyperplasia were finally diagnosed as invasive carcinoma after surgery. Six lesions diagnosed at core biopsy as benign were later found to be malignant (false-negative rate, 8.3%). Radiologic imaging suggested that all six lesions-for two of which, a 14-gauge needle was used, and for four, a 16-gauge needle-were malignant. The false-negative rate was 5.1% and 12%, respectively, without statistical significance ($p=0.26$).

Conclusion: Ultrasound-guided core needle biopsy for non-palpable breast lesions is useful and can replace surgical excision. To avoid false-negative assessment, however, strict radiologic-histopathologic correlation is required.

Index words : Breast, biopsy
Breast neoplasms, diagnosis
Breast, US
Breast, diseases

Address reprint requests to : Eun-Kyung Kim, M.D., Department of Diagnostic Radiology, Yonsei University College of Medicine,
134, Shinchon-dong, Seodaemun-gu, Seoul 120-752, Korea.
Tel. 82-2-361-6687 Fax. 82-2-393-3035 E-mail: ekkim@yumc.yonsei.ac.kr