



1

(congenital mesoblastic nephroma)

가

가

(1).

6

(2 - calcification) (Fig. 1F). (dystrophic

6), 가 가 가 (2).

1

1

Wilms ' (1)

, Blande

41 가 3

CT 가 가 3 cm

가 (Fig. 1A). (Fig. 1B).

T1

mesenchyme) (primary

enchymal cell) (secondary mes -

T2

(1, 2, 5).

(Fig. 1C - 1E).

가

(dystrophic calcification)

CT 5 cm 가

(6, 7).

3 cm

가

가

Wilms ' ,

2001 8 8 2001 11 2

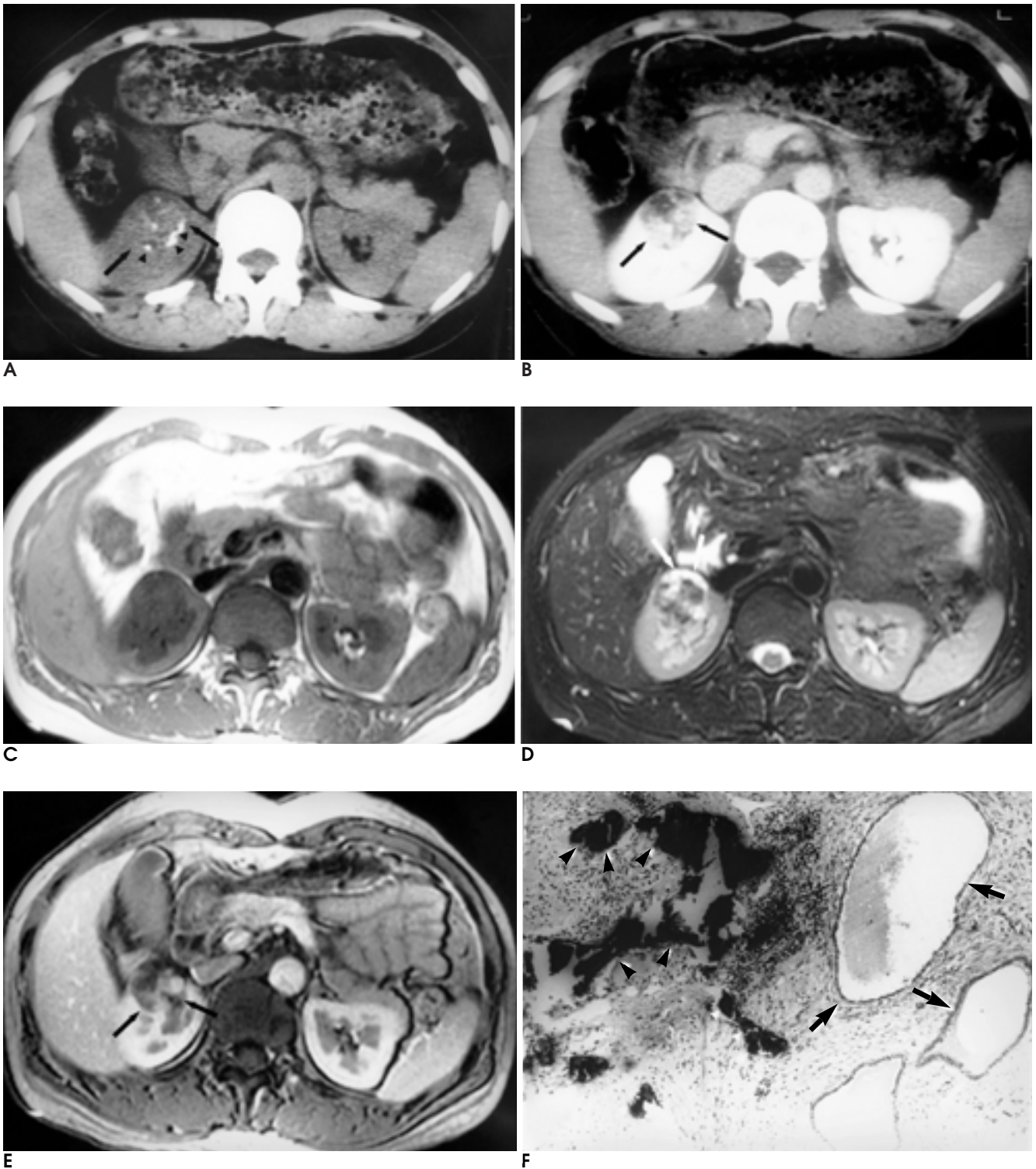


Fig. 1. A mesoblastic nephroma in a 42-year-old woman.

A. Precontrast CT scan shows a bulging renal mass (arrows) with punctate calcifications (arrowheads) in the upper pole of right kidney.

B. Postcontrast CT scan shows a heterogeneous enhancing mass (arrows).

C. T1-weighted spin echo image (TR/TE = 500/20) shows hypointense mass in the upper pole of right kidney.

D. T2-weighted fast spin echo image (TR/TE = 7,500/99) shows heterogeneous hyperintense mass with cystic portion (arrows).

E. Gadolinium-enhanced fast multiplanar spoiled gradient echo (TR/TE = 110/4.1, flip angle = 80°) image shows heterogeneous enhancing mass (arrows).

F. Microscopic examination (× 100) shows proliferation of uniform spindle cells, dilated columnar epithelial lining tubules (arrows) and dystrophic calcification (arrowheads).

(8).

(punctate), (amorphous), (linear),
(curvilinear) (8, 9). , Wilms '

Shiraishi (4) T1
T2
Yanaihara (10) T2

가 T1
T2
가
가

1. Blande RP. Congenital mesoblastic nephroma of infancy. *Perspect Pediatric Pathol* 1973;1:227-250
2. Block NL, Grabstad HG, Melamed MR. Congenital mesoblastic nephroma (leiomyomatous hamatoma): First adult case. *J Urol* 1973;110:380-383
3. Kobayashi T, Nakane Y, Okino K, et al. A case of congenital mesoblastic nephroma in an adult. *Jpn J Clin Surg* 1992;53:437-441
4. Shiraishi K, Yamamoto M, Gondo T, Shirataki S, Naito K. Mesoblastic nephroma in adulthood: A case report. *Int J Urol* 1999;6:414-418
5. Durham JR, Bostwick DG, Farrow GM, Ohorodnik JM. Mesoblastic nephroma of adulthood.: Report of three cases. *Am J Surg Path* 1993;17:1029-1038
6. Freedy JA, Fishman EK, Marshall FF, Henneberry JM. Mesoblastic nephroma in an adult: Spiral CT appearance. *Abdom Imaging* 1997;22:439-440
7. Rieumont MJ, Whitman GJ. Mesoblastic nephroma. *J Comput Assist Tomogr* 1982;6:180-183
8. Kim WS, Goldman SM, Gatewood OMB, et al. Computed tomography in calcified renal masses. *J Comput Assist Tomogr* 1981;5:855-860
9. Weyman PJ, McClellan BL, Lee JKT, Stanley RJ. CT of calcified renal masses. *AJR Am J Roentgenol* 1982;138:1095-1099
10. Yanaihara H, Hayakawa K, Ohashi M, Ishikawa H, Hata M. A case of huge renal hamatoma. *Jpn J Urol* 1995;86:1394-1397

J Korean Radiol Soc 2002;46:247 - 249

Calcified Mesoblastic Nephroma in an Adult: A Case Report¹

Hee Sang Lee, M.D., Yong Yeon Jeong, M.D., Song Choi, M.D., Heoung Keun Kang, M.D.

¹Department of Diagnostic Radiology, Chonnam National University Medical School

Mesoblastic nephroma is an uncommon renal tumor reported in infants but rarely in adults. We describe a case of calcified mesoblastic nephroma occurring in an adult. It is difficult, on the basis of radiologic images, to differentiate between calcified mesoblastic nephroma and calcified renal cell carcinoma.

Index words : Kidney, neoplasms
Kidney, CT
Kidney, MR

Address reprint requests to : Hee Sang Lee, M.D., Department of Diagnostic Radiology, Chonnam University Hospital,
Research Institute of Medical Imaging 8 Hak-dong, Dong-gu, Kwangju 501-757, Korea.
Tel. 82-62-220-5751-3 Fax. 82-62-226-4380