



가 . ,
가 1 , MRI,
가 (Fig. 1B). MRI
3% (1). (malig-
nant fibrous histiocytoma),
(spindle cell tumor)
(2 - 5).
6), T1 , T2
(Fig. 1C).
T1 , T2
(Fig. 1D).
가
(Fig. 1E).
가 (Fig.
23 가 가 1F).
가 7.5 MHz
14 x 10 cm
가
가
가
1%
(Fig. 1A), (7).

1
2

2000 3 24

2000 9 1

(7). 가 (com - puted tomography, CT) 50 - 100 % 가 (7). 가 (8). MRI T1 T2

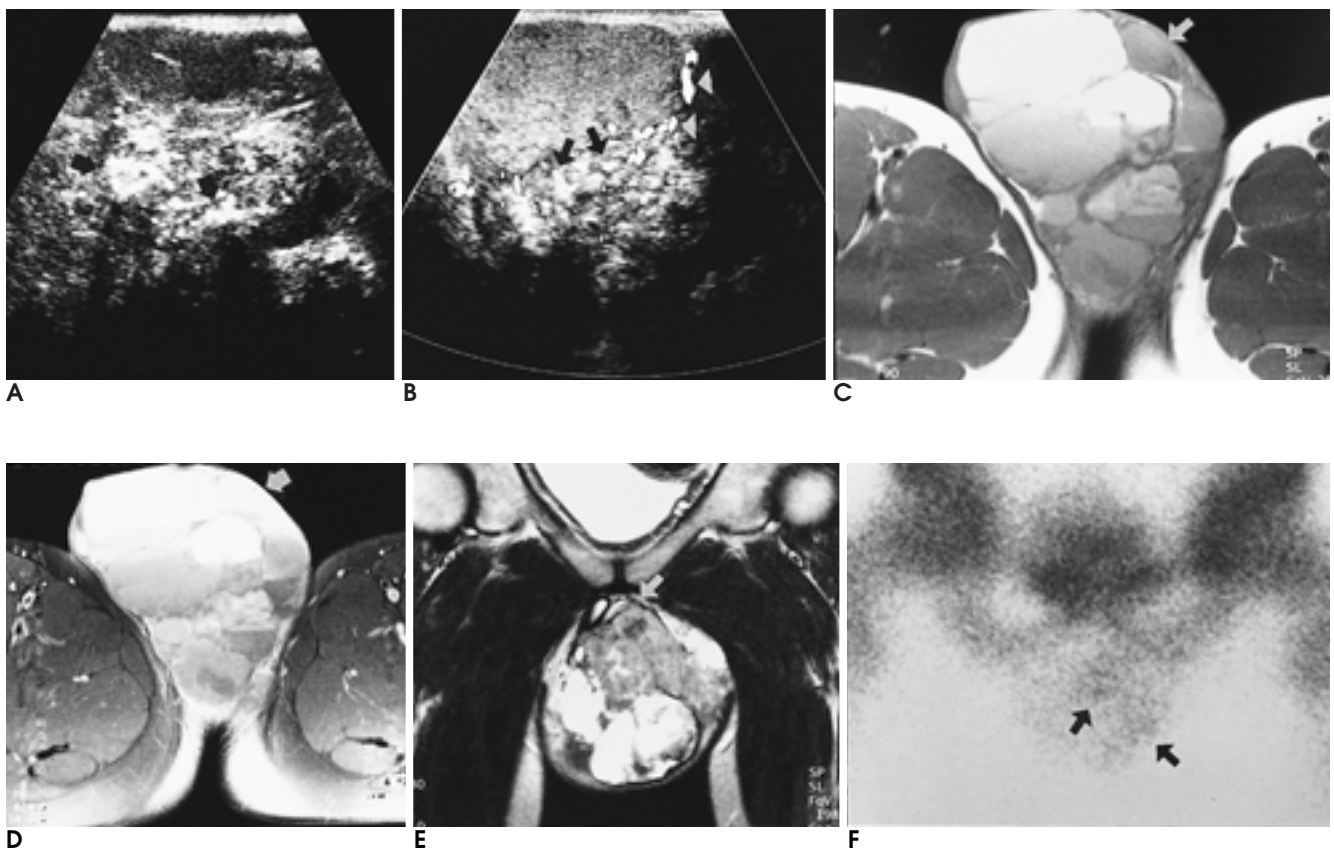


Fig. 1. A 23-year-old man with intrascrotal extratesticular mesenchymal chondrosarcoma.

A. Ultrasonogram shows a large, lobulated, mixed echogenic solid mass which contains multiple hyperechoic spots, representing calcifications (black arrows).

B. On power doppler ultrasonogram, there are vascular flow signals in the mass (arrowheads).

C. There is a large mixed cystic and solid mass with well defined margin and lobulated contour. T1 weighted axial MR image shows intermediate and high signal intensity. This mass contains multilocular cystic component with hemorrhage anteriorly and solid component of intermediate signal intensity posteriorly. Note the displaced left testis (arrow).

D. Contrast enhanced T1-weighted axial MR image shows inhomogeneous well enhancement of solid component posteriorly. Note the homogeneously well enhancing left testis (arrow).

E. T2-weighted coronal MR image shows inhomogeneous mass of intermediate and high signal intensity which displaces corpora cavernosa superiorly and poorly defined margin with left side corpus cavernosum (arrow). The pubic bone shows normal contour and marrow signal intensity.

F. ^{99m}Tc -MDP bone scan shows warm uptake at the scrotal soft tissue mass (arrows), but the bony pelvis does not show abnormally increased uptake of radioisotope.

가

T1
(8).

가

MRI

(8). MRI

(7 - 9).

가

1. Beccia D, Krane R, Olsson C. Clinical management of non-testicular intrascrotal tumors. *J Urol* 1976;116:476-479
2. Frates MC, Benson CB, DiSalvo DN, Brown DL, Laing FC, Doubilet PM. Solid extratesticular masses evaluated with sonography: pathologic correlation. *Radiology* 1997;204:43-46
3. Freimanis M, Bohm-Velez M, Mendelson E, Erickson E, Campanella S. Ultrasound appearance of extratesticular myosarcoma. *J Clin Ultrasound* 1991;19:101-104
4. Safak M, Baltaci S, Yaman S, Uloglu O, Eryilmaz Y. Intrascrotal extratesticular malignant schwannoma. *Eur Urol* 1992;21:340-342
5. Holden A, List A. Extratesticular lesions: a radiological and pathological correlation. *Australas Radiol* 1994;38:99-105
6. Angervall L, Enerback L, Knutson H. Chondrosarcoma of soft tissue origin. *Cancer* 1973;32:507-513
7. Kransdorf MJ, Meis JM. Extraskeletal osseous and cartilaginous tumors of the extremities. *Radiographics* 1993;13:853-884
8. Shapeero LG, Vanel D, Couanet D, Contesso G, Ackerman LV. Extraskeletal mesenchymal chondrosarcoma. *Radiology* 1993;186:819-826
9. Varna DGJ, Anala AG, Carrasco CH, Guo S, Kumar R, Edeiken J. Chondrosarcoma: MR imaging with pathologic correlation. *Radiographics* 1992;12:687-704

J Korean Radiol Soc 2000;43:611 - 613

Mesenchymal Chondrosarcoma Arising from the Intrascrotal Extratesticular Soft Tissue: A Case Report¹

Jong-Uk Lim, M.D., Bong-Sik Koo, M.D., Byeong-Ho Park, M.D., Chang-Sook Park, M.D.,
Kyung-Jin Nam, M.D., Heon-Young Kweon, M.D.²

¹Department of Diagnostic Radiology, College of Medicine, Dong-A University

²Department of Urology, College of Medicine, Dong-A University

Intrascrotal extratesticular malignancies are rare, and the radiologic findings of extraskeletal chondrosarcoma have not been reported. We describe the radiologic findings of a case of mesenchymal chondrosarcoma arising from intrascrotal extratesticular soft tissue and represented by a complex, cystic, solid mass containing calcifications and hematoma.

Index words : Scrotum, MR
Scrotum, US
Soft tissues, neoplasms
Sarcoma

Address reprint requests to : Chang-Sook Park, M.D., Department of Diagnostic Radiology, Dong-A University College of Medicine,
1, 3-Ga, Dongdaesin-Dong, Seo-Gu, Pusan, 602-715, Korea.
Tel. 82-51-240-5368 Fax. 82-51-253-4931

1945 10

가

가

1. :

2. :

1) - 100,000

2) - 50,000

3. 1)

2)

3)

4)

5)

4. :

,

5. : 1) (622page)

2)

6. :