

가 : 1

. . . . 2

가 . 가
가 . CT,

가 (calcifying fibrous pseudotumor, CFP)
(psammomatous) , 7
(lymphoplasmacytic)
(Fig. 3C, 3D).

Armed Forces Institute of Pathology (AFIP)
Fetsch (1) 20 가 CT
CFP가
CFP
(dystrophic) 가
가 (Fig. 5).

30 가
6cm 가
(Fig 1), (computed tomogra-
phy, CT)

(Fig. 2A). CT 가
(Fig. 2B). 가

. 2 1.5 Tesla
(magnetic resonance, MR) (Magnetom Vision; Siemens Medical
System, Erlangen, German) , T2(Fig. 3A)
T1(Fig. 3B)-

. Gadolinium MR



Fig. 1. Plain abdomen shows a soft tissue mass lesion with irregular and rimmed calcifications in right upper abdomen.

¹
²

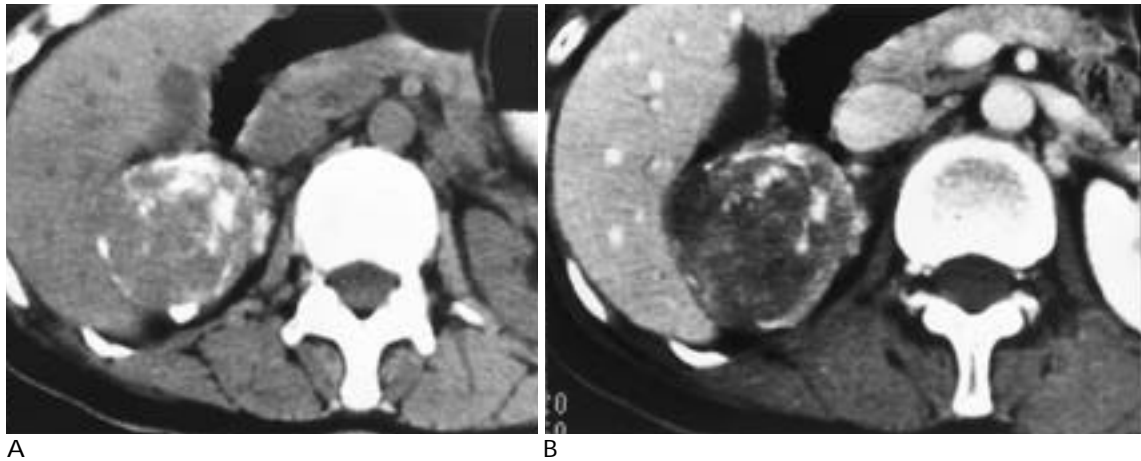
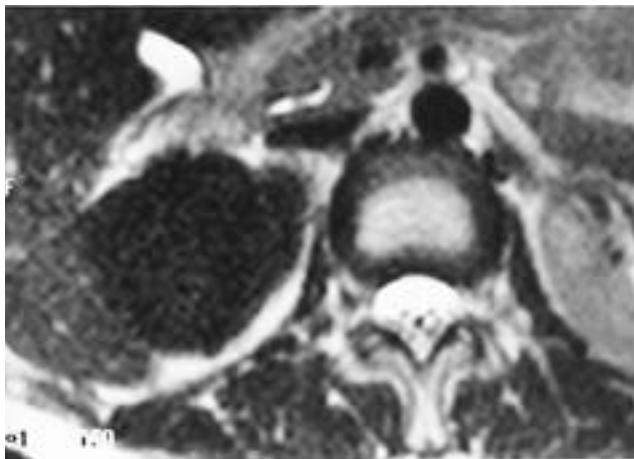


Fig. 2. Pre-enhanced CT scan shows a round soft tissue density mass lesion with irregular and rim calcifications (A) and contrast-enhanced CT scan shows minimal peripheral contrast enhancement (B).



A

Fig. 3. A homogeneous mass lesion with similar to lower signal intensity than back muscle is seen in axial T2- (A) and coronal T1-weighted (B) images. Dynamic Gadolinium-enhanced coronal MR images (60 seconds (C) and 5 minutes (D) after contrast injection) show a mass with progressive contrast enhancement from the periphery to the center of the mass. Inhomogeneous and strong enhancement was left until 7 minutes after contrast injection (not shown here).



B



C



D

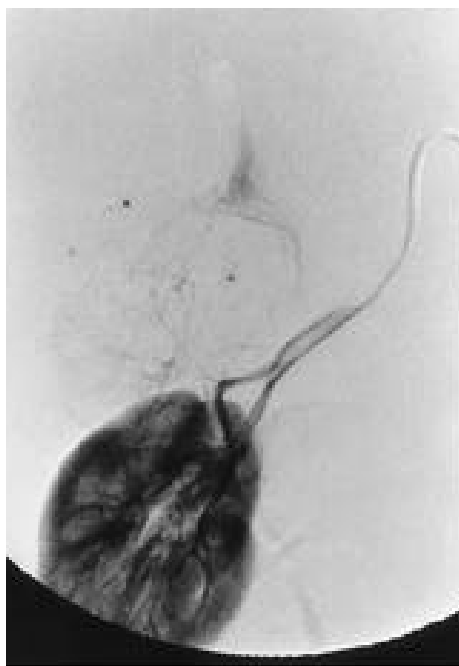
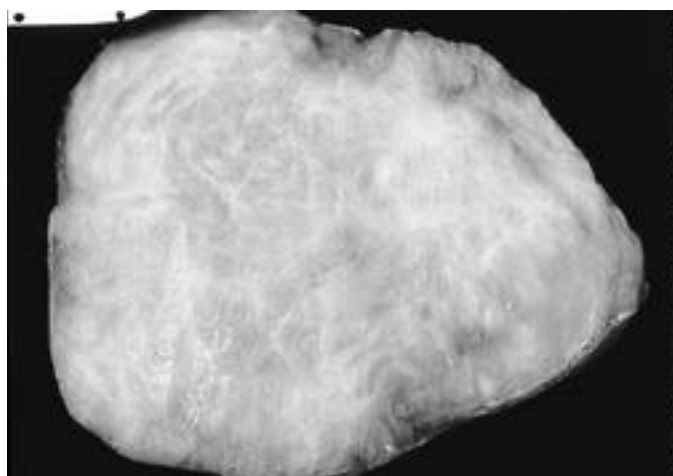
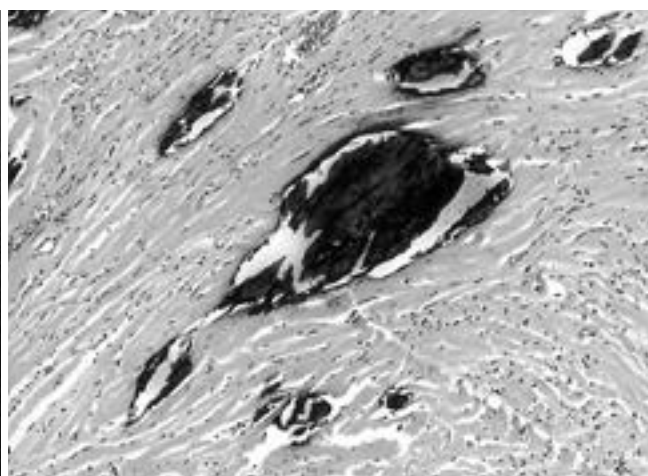


Fig. 4. Right renal arteriography shows faint tumor staining supplied by capsular and inferior suprarenal arteries.

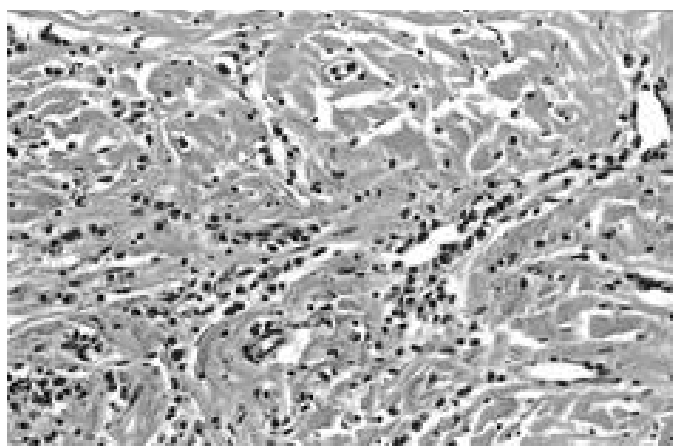
(1).
 Lee Sen “ 가
 Karim “ (2) Rosenthal Abdul-
 (psammoma body) 가
 (3)
 . Medline Index 20 (Table 1)
 , 6 , 4 , 3 ,
 , , , 1
 Erasmus (5) 가
 CFP 가
 2.5 15cm
 Pinkard (4)
 (1).
 CFP
 가
 6). , CT, MR
 (1-



A



B



C

Fig. 5. The gross specimen (A) shows a well circumscribed, unencapsulated densely fibrotic mass, measuring 6 × 5 × 5 cm in size. The cut surface is yellow tan and shows thick collagen bundles. On microscopic examination, calcifications are scattered in densely fibrotic, hyalinized stroma (B, H & E, × 40) and mild perivascular infiltration of lymphocytes and plasma cells are noted within the densely fibrotic stroma (C, H & E, × 100).

가

CT, T1, CFP

T2- MR

MR

가

CFP가

가

가, MR

가

가

MR

가

1. Fetsch JF, Montgomery EA, Meis JM. Calcifying fibrous pseudotumor. *Am J Surg Pathol* 1993;17(5):502-508
2. Lee YS, Sen BK. Dystrophic and psammomatous calcifications in a desmoid tumor. A light microscopic and ultrastructural study. *Cancer* 1985;55:84-90
3. Rosenthal NS, Abdul-Karim FW. Childhood fibrous tumor with psammoma bodies. Clinicopathologic features in two cases. *Arch Pathol Lab Med* 1988;112:798-800
4. Pinkard NB, Wilson RW, Lawless N, et al. Calcifying fibrous pseudotumor of pleura. A report of three cases of a newly described entity involving the pleura. *Am J Clin Pathol* 1996; 105:189-194
5. Erasmus JJ, McAdams HP, Patz EF, Murray JG, Pinkard NB. Calcifying fibrous pseudotumor of pleura: radiologic features in three cases. *J Comput Assist Tomogr* 1996;20:763-765
6. Reed MK, Margraf LR, Nikaidoh H, Cleveland DC. Calcifying fibrous pseudotumor of the chest wall. *Ann Thorac Surg* 1996;62: 873-874

J Korean Radiol Soc 1999;40:953-956

Calcifying Fibrous Pseudotumor of the Retroperitoneum: A Case Report¹

Jae Ho Cho, M.D., Mi Soo Hwang, M.D., Jay Chun Chang, M.D.,
Bok Hwan Park, M.D., and Dong Sug Kim, M.D.²

¹Department of Diagnostic Radiology, College of Medicine, Yeungnam University

²Department of Anatomic Pathology, College of Medicine, Yeungnam University

We report a case of calcifying fibrous pseudotumor in the retroperitoneum. This is a rare soft tissue mass lesion with specific radiologic and pathologic findings, and it is the first reported case arising in the retroperitoneum. The CT, MR and angiographic findings are described.

Index words : Retroperitoneal space, disease
Retroperitoneal space, CT
Retroperitoneal space, MR

Address reprint requests to : Jae Ho Cho, M.D., Departments of Diagnostic Radiology, College of Medicine, Yeungnam University
317-1 Daemyungdong, Namgu, Taegu 705-035, Korea.
Tel. 82-53-620-3043, Fax. 82-53-653-5483, e-mail. jhcho@medical.yeungnam.ac.kr.