

## Ischemic Evidence of Transient Global Amnesia: Location of the Lesion in the Hippocampus

YoungSoon Yang, MD<sup>a</sup>, SangYun Kim, MD<sup>b</sup>, Jae Hyoung Kim, MD<sup>c</sup>

<sup>a</sup>Department of Neurology, Soonchunhyang University College of Medicine, Seoul, Korea

<sup>b</sup>Department of Neurology & <sup>c</sup>Department of Radiology, Seoul National University College of Medicine, Seoul, Korea

**Background and purpose:** Transient global amnesia (TGA) is a rare amnesic syndrome characterized by the sudden onset of a selective anterograde and retrograde amnesia with a time course of up to 24 hours. Recent studies have found a high frequency of small high-signal abnormalities in the hippocampus on diffusion-weighted imaging (DWI), and accordingly ischemia has been proposed as an etiology of TGA. We hypothesized that TGA lesions occur preferentially in the CA1 region of the hippocampus, which is known to be susceptible to ischemia.

**Methods:** Twenty consecutive patients with a clinical diagnosis of TGA underwent DWI both within 24 hours of symptom onset and 3 days later. Twenty patients with high-signal abnormalities in the hippocampus on the initial DWI underwent subsequent DWI and T2-weighted imaging in the coronal plane to precisely localize the lesions.

**Results:** Seventeen patients had small high-signal abnormalities (with diameters of 1–3 mm) in the hippocampus unilaterally on DWI. One of these patients had two lesions in one hippocampus. Three of the 20 patients had lesions bilaterally in the hippocampus, 1 of whom had 3 bilateral lesions. A total of 25 lesions were identified: 5 in the hippocampal head, 19 in the body, and 1 in the tail. Six patients had unilateral lesions on the left, 11 patients had them on the right, and 3 patients had bilateral lesions.

**Conclusions:** In this study, lesions associated with TGA were localized mostly to the lateral portion of the hippocampus, corresponding to CA1. This finding supports the ischemic etiology of TGA, but the underlying pathophysiologic mechanism requires further investigation.

*J Clin Neurol 4(2):59–66, 2008*

**Key Words:** Transient global amnesia, CA1, Hippocampus

### INTRODUCTION

Transient global amnesia (TGA) is a rare amnesic syndrome characterized by the sudden onset of selective antero- and retrograde amnesia with a time course of up to 24 hours. The clinical and neuropsychological spectrum of this syndrome has been characterized previously, and several etiological factors (e.g., migraine, focal ischemia, venous flow abnormalities, and epileptic phenomena) have been suggested

to be involved in the pathophysiology, although no clear picture has emerged from these findings.<sup>1,2</sup> The nature of the observed MRI changes and hence the pathophysiologic mechanisms underlying TGA remain unclear. Several pathogenic mechanisms have been suggested (e.g., migraine, cortical spreading depression, ischemia, venous flow abnormalities, and seizure activity), which might lead to impairment of cellular diffusion with subsequent diffusion-weighted imaging (DWI) changes.<sup>2</sup> Several case studies using single-photon-emission tomography have shown transient

Received September 4, 2007. Accepted in final form May 23, 2008 / Address for correspondence: SangYun Kim, MD, PhD  
Department of Neurology, College of Medicine, Seoul National University, Seoul National University Bundang Hospital, 300 Gumi-dong,  
Bundang-gu, Seongnam-si, Gyeonggi-do, 463-707, Korea  
Tel: +82-31-787-7462, Fax: +82-31-719-6815, E-mail: neuroksy@snu.ac.kr

relative hypoperfusion in the temporal lobe during the acute phase of TGA.<sup>4-7</sup> More recently, DWI has been used to detect high-signal abnormalities in the hippocampus, which provides strong evidence of a causative ischemic event.<sup>8</sup> The signal abnormalities detected by DWI in TGA are predominantly spots 1 to 3 mm in diameter in the hippocampus.<sup>8</sup> In one study, the lesions were mainly localized to the upper lateral portion of the hippocampus, which corresponds to the CA1 region<sup>9</sup> and is known to be susceptible to hypoxia.<sup>10</sup> However, in most of the other previous studies, DWI and/or T2-weighted imaging were not performed in the coronal plane, which made it difficult to localize the lesions precisely within the hippocampus. In the present study, we performed DWI and T2-weighted imaging in the coronal plane perpendicular to the hippocampus in patients with TGA. We hypothesized that TGA lesions would occur preferentially in the lateral portion of the hippocampus corresponding to CA1.

## MATERIALS AND METHODS

### 1. Subjects

From October 2006 to June 2007, 20 consecutive patients with a clinical diagnosis of TGA at the emergency room of Seoul National University Bundang Hospital were enrolled for this study after excluding

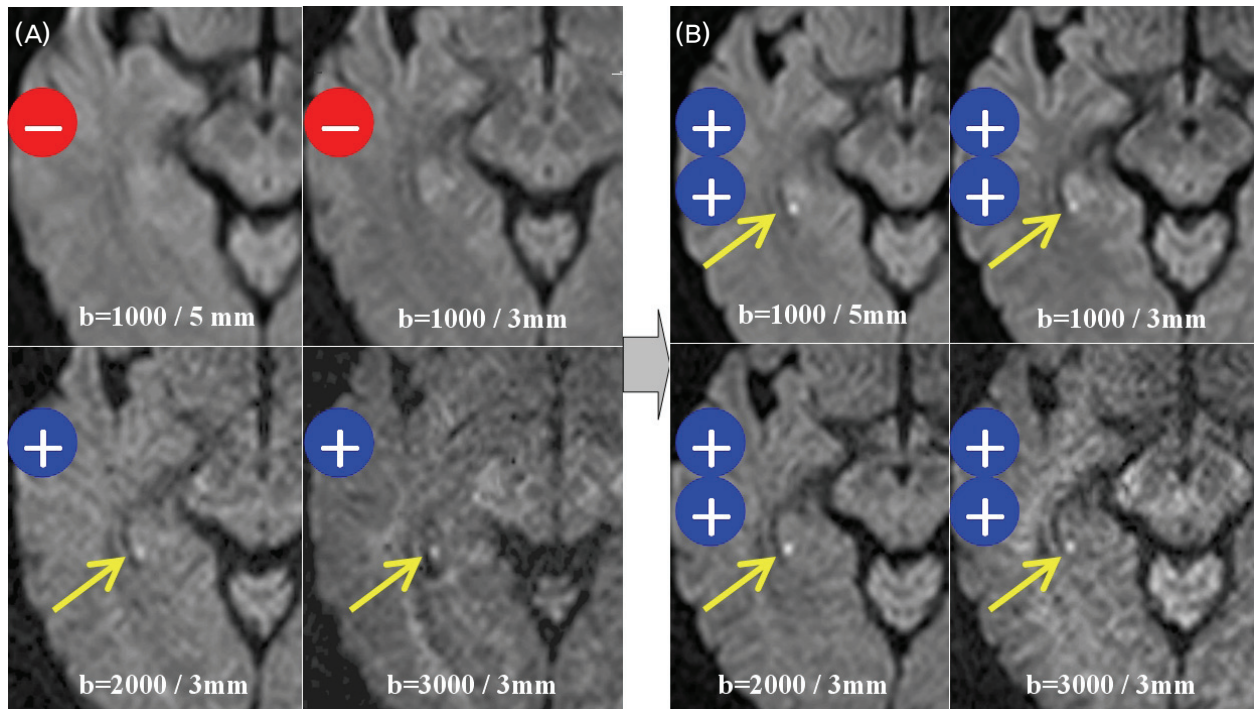
1 patient without MRI within 1 day of symptom onset. The patients comprised 15 women and 5 men aged from 51 to 70 years (mean=59.2 years, Table 1). These patients underwent MRI including DWI from 5 to 23 hours (mean=13.8 hours) after symptom onset. The duration of the TGA attack was  $8.2 \pm 2.9$  hours (mean $\pm$ SD). MRI was repeated 3 days later once the patients had recovered. All the patients fulfilled the following six TGA criteria proposed by Hodges and Warlow: (1) the attack must be witnessed and information must be available from a capable observer who has to be present for most of the attacks, (2) there must be a clear-cut anterograde amnesia during the attack, (3) clouding of consciousness and loss of personal identity must be absent and the cognitive impairment must be limited to amnesia, (4) there should be no accompanying focal neurological symptom during the attack and no significant neurological sign afterward, (5) epileptic features must be absent, and (6) the patient must not have had a recent head injury or active epilepsy.<sup>1</sup>

### 2. MRI Technique

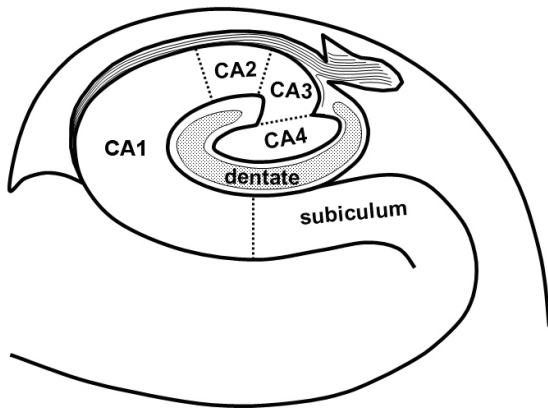
MRI was conducted using a 1.5-T unit (Intera, Philips Medical Systems, Best, The Netherlands) with a sensitivity-encoding (SENSE) head coil and a head/neck synergy coil. Patients initially underwent MRI using our stroke protocol, which consisted of DWI, T1- and T2-weighted, fluid-attenuated inversion-recovery, and conventional gradient-echo imaging in the transverse plane, three-dimensional TOF angiography of the intracranial region, and contrast-enhanced angiography of the neck region. Subsequent DWI and T2-weighted imaging in the coronal plane were performed perpendicularly to the long axis of the hippocampus with thinner slices. Coronal T2-weighted imaging was performed using the fast spin-echo technique with the following parameters: matrix=256 $\times$ 256 interpolated to 512 $\times$ 512, field of view=200-220 mm, slice thickness=3 mm, TR=4113 ms, TE=100 ms, echo-train length=24, SENSE factor=1, and number of acquisitions=3. DWI was performed in a transverse plane at 1.5 T initially within 24 hours after TGA onset (mean=12 hours,

**Table 1.** Baseline demographics and clinical data

Number of patients	20
Mean age, years	59.2
Sex (males/females)	5/15
Hypertension	8 (40%)
Ischemic heart disease	3 (15%)
Hypercholesterolemia	6 (30%)
Smoking	4 (20%)
Diabetes	4 (20%)
Atrial fibrillation	7 (35%)
Carotid atherosclerosis	7 (35%)
Time to DWI (hours)	13.8
Duration of symptoms (hours)	6.5
DWI-based detection	20/20 (100%)



**Figure 1.** Imaging results in patient 11 (64-year-old female). Initial DWI images obtained at 11 hours after TGA onset show no lesion for  $b=1000/\text{slice thickness}=5\text{ mm}$  and  $b=1000/\text{slice thickness}=3\text{ mm}$ , but a subtle high-signal lesion (grade +) in the right hippocampus for  $b=2000/\text{slice thickness}=3\text{ mm}$  and  $b=3000/\text{slice thickness}=3\text{ mm}$  (arrow, A). Three-day DWI images show a higher signal lesion (grade ++) for all sequences (B).



**Figure 2.** Coronal schematic drawing of the subfields in the right hippocampal body. The lower medial, lateral, and upper medial regions of the hippocampus correspond approximately to the subiculum, CA1, and remaining sectors (including CA2, CA3, CA4, and the dentate gyrus), respectively.

range=4-22 hours) and then after 3 days (mean=73 hours, range=71-75 hours) with four sequences:  $b=1000$  ( $\text{sec}/\text{mm}^2$ ) and slice thickness=5 mm,  $b=1000$  and slice thickness=3 mm,  $b=2000$  and slice thickness=3 mm, and  $b=3000$  and slice thickness=3 mm. These DWI sequences consisted of single-shot spin-echo echo planar imaging with the following parameters: matrix=128×128 interpolated to 256×256, field of view=220

mm, TR=5000-12,500 ms (5000 ms for  $b=1000$ , 9400 ms for  $b=2000$ , and 12,500 ms for  $b=3000$ ), TE=60-75 ms, SENSE factor=2, and number of acquisitions=4. Detection rates of the lesion on DWI were compared based on the consensus of three neuroradiologists. If the lesion was positive on DWI, lesion conspicuity was graded as + or ++ (Fig. 1). All patients with high-signal abnormalities in the hippocampus on the

initial DWI underwent subsequent DWI and T2-weighted imaging in the coronal plane to precisely localize the lesions.

### 3. Analysis

Locations of the lesions in the hippocampus (i.e., unilateral/bilateral and head/body/tail) were evaluated primarily using transverse DWI. The hippocampal lesions were localized more specifically on thin-section coronal DWI and T2-weighted images. Lesion locations were arbitrarily divided into lower medial, lateral, and upper medial regions (Fig. 2). According to the existing knowledge of the hippocampal anatomy,<sup>11</sup> CA1 – the largest of the four hippocampal sectors (i.e., CA1–CA4) – occupies the lateral curvature of the hippocampus. Therefore, the lower medial, lateral, and upper medial regions correspond approximately to the subiculum, CA1, and remaining sectors (including CA2, CA3, CA4, and the dentate gyrus), respectively.

## RESULTS

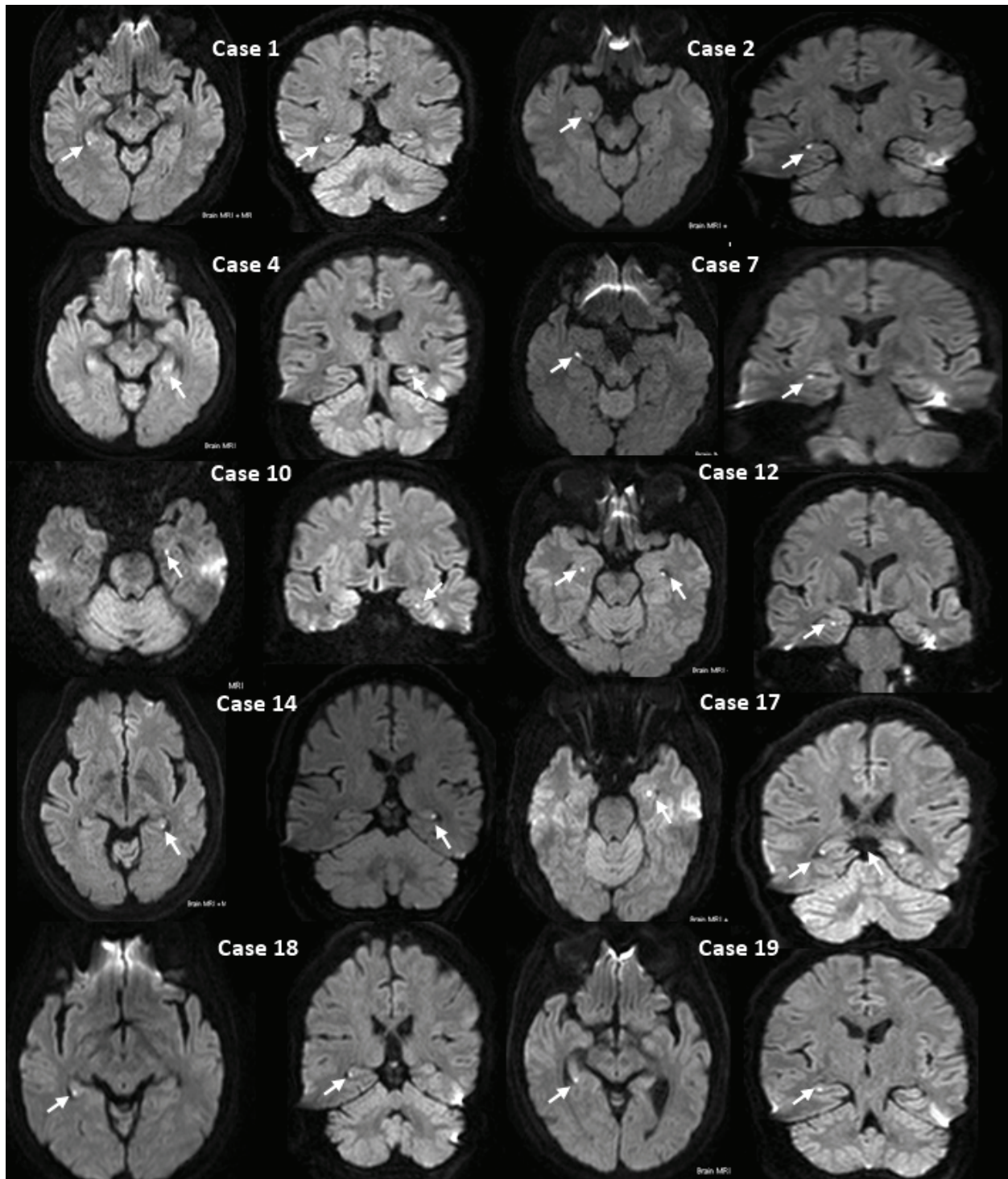
All patients had small punctuate (1-3 mm) DWI high-signal lesions in the hippocampus. The clinical data of the 20 patients are listed in Table 2. No abnormal findings other than hippocampal lesions were detected on DWI and other MRI modalities. In 17 patients the high-signal hippocampal abnormalities were unilaterally on DWI. One of these patients had two lesions in one hippocampus. Three of the 20 patients had lesions bilaterally in the hippocampus, 1 of whom had 3 bilateral lesions. A total of 25 lesions were identified: 5 in the hippocampal head, 19 in the body, and 1 in the tail. Six patients had unilateral lesions on the left, 11 patients had them on the right, and 3 patients had bilateral lesions. All lesions were found in the lateral portion of the hippocampus on transverse DWI (Fig. 3). All lesions were clearly demonstrated on both coronal DWI and T2-weighted

**Table 2.** Summary of patients with DWI signal abnormalities

Patient no.	Age (years)	Sex	Duration of TGA (hours)	Time to Initial DWI from Symptom Onset (hours)	Hippocampal Lesion Location	Lesion Location on Coronal Image
1	56	F	1	23	Right, body	Lateral
2	60	F	3	15	Right, head	Lateral
3	65	F	7	8	Left, body	Lateral
					(two lesions)	(two lesions)
4	56	F	5	5	Left, body	Lateral
5	69	F	6	19	Left, head	Lateral
6	54	F	8	14	Right, head	Lateral
7	70	M	2	8	Right, body	Lateral
8	57	F	5.5	10	Right, head	Lateral
9	51	F	7	22	Right, body	Lateral
10	52	F	13	16	Left, body	Lateral
11	64	F	8	11	Right, body	Lateral
12	62	F	17	17	Bilateral	Lateral
13	69	F	8	16	Right, body	Lateral
14	52	M	5	12	Left, body	Lateral
15	52	F	16	9	Right, body	Lateral
16	59	M	9	9	Left, tail	Lateral
17	53	M	8	19	Bilateral	Lateral
18	58	F	10	17	Right, body	Lateral
19	65	F	10	16	Right, body	Lateral
20	61	F	5	10	Bilateral	Lateral
					(three lesions)	(three lesions)

F; female, M; male.

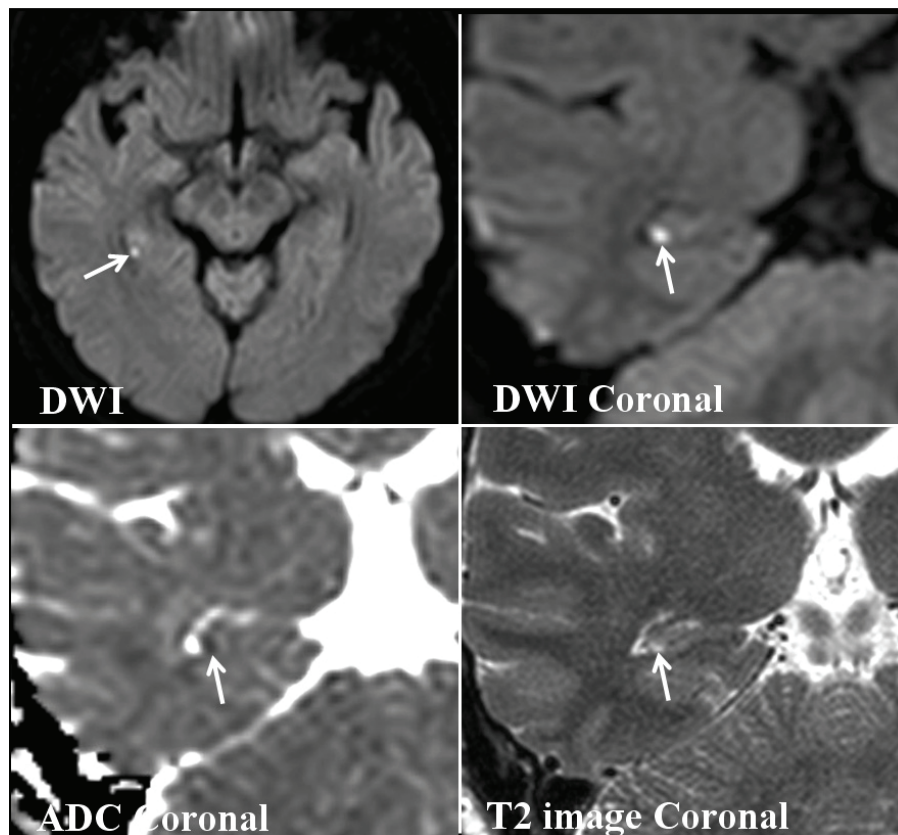




**Figure 3.** MRI findings of TGA patients. Transverse and coronal DWI show a small high-signal lesion (arrow) in the lateral region of the hippocampus (patients 1, 2, 4, 7, 10, 12, 14, 17, 18, and 19).

images, and were localized to the lateral region of the hippocampus and corresponded to small areas of low

signal intensity on apparent diffusion coefficient maps (Fig. 4).



**Figure 4.** A 64-year-old woman (patient 11) with transient global amnesia. Transverse and coronal DWI show a small high-signal lesion in the lateral region of the posterior body of the hippocampus (arrow). An apparent diffusion coefficient map shows the low apparent diffusion coefficient of the lesion. Coronal T2-weighted image shows a small high-signal lesion in the same location as in DWI.

## DISCUSSION

One of the hypotheses for the etiology of TGA is transient cerebral ischemia. In contrast to the findings in TIA patients, the results of DWI studies in TGA patients are controversial. A variety of stressful events, including physical activity and emotional stress, are known to precede TGA in many cases. Lewis<sup>12</sup> pointed out that TGA might be caused by venous congestion as a consequence of a retrograde transmission of high venous pressure after Valsalva-like activities. This hypothesis was confirmed by the finding that the incidence of a retrograde flow pattern in the internal jugular vein is elevated in TGA.<sup>13,14</sup> Others have proposed a specific anxious personality trait in TGA patients that

might induce vasoconstriction due to hyperventilation during emotional arousal.<sup>15</sup> Therefore, temporary hypoperfusion either due to venous congestion or vasoconstriction due to hyperventilation could cause TGA. The increased vulnerability of the hippocampus and the venous drainage might help to explain why memory structures are the first to be involved.<sup>14</sup> Regarding the thromboembolic hypothesis, some previous studies found no association between TGA and vascular risk factors,<sup>16</sup> whereas others suggested an association with vascular risk factors. However, the thromboembolic hypothesis is still suggested for the etiology of TGA. Patients with TGA show a higher vascular risk profile, significantly more frequent carotid atherosclerosis, and an increased carotid intima-media thickness compared to patients without TGA patients.<sup>13</sup>

These findings might support an arterial embolic event, particularly in this subgroup of TGA patients.

Clinical and experimental data show that hippocampal CA1 neurons are critically involved in the process of memory consolidation by exhibiting a relay function in direct and polysynaptic intrahippocampal circuits, and lesions in this area are sufficient to produce clinically significant memory impairment. Pathophysiologically, neurons of the CA1 sector (Sommer sector) of the cornu ammonis are of particular interest since they show a selective vulnerability to cellular metabolic stress (e.g., during hypoxemia and ischemia) that leads to the glutamate- and calcium-induced and apoptosis-mediated 'delayed neuronal death' of affected neurons 1-3 days after hypoxia. CA1 is known to be the sector most vulnerable to hypoxia, and is supplied by only one large ventral artery, whereas the other regions (i.e., CA2–CA4) are supplied by one large dorsal artery and several small arteries. Moreover, there are fewer microvessels in CA1 than in the other sectors.<sup>9</sup> These anatomical differences could make CA1 more vulnerable to ischemia than the other sectors.

We suggest the following reasons for the low detection rate of DWI lesions during the first several hours after TGA onset. First, the lesion is too small and its DWI signal intensity is subtle at the hyperacute stage, making it susceptible to partial volume averaging due to the MRI sectioning thickness being larger than the lesion. We have also found in other investigations (separate from this study) that the lesion detection rate within 12 hours of TGA onset was higher for transverse DWI with a thinner section thickness (3 mm) and higher *b* value (2000 sec/mm<sup>2</sup>). Second, the pathogenetic mechanism of ischemia in TGA might differ from the more common thromboembolic ischemia. Delayed neuronal injury might occur, and the appearance of DWI lesions might also be delayed. In addition, a high signal intensity on DWI does not always indicate ischemia, as seen in other conditions such as multiple sclerosis and seizure.<sup>17</sup> However, we speculate that a delayed appearance of a high DWI signal (which was too subtle to be detected initially) might result from the progressive T2 prolongation of the infarcted tissue. The high signal intensity of the

infarctions on DWI after the first several hours results from a combination of diffusion restriction and T2 prolongation. Further developments of optimal DWI protocols for TGA that consider the section thickness, *b* value, and imaging timing might enable earlier and more accurate diagnosis, thereby aiding the documentation of heterogeneous DWI findings.

In conclusion, in this study lesions associated with TGA were localized mostly to the lateral portion of the hippocampus corresponding to CA1. This finding supports the ischemic etiology of TGA, but the underlying pathophysiologic mechanism requires further investigation.

## REFERENCES

1. Hodges JR, Warlow CP. Syndromes of transient amnesia: towards a classification. A study of 153 cases. *J Neurol Neurosurg Psychiatry* 1990;53:834-843.
2. Hodges JR, Warlow CP. The aetiology of transient global amnesia. A case-control study of 114 cases with prospective follow-up. *Brain* 1990;113:639-657.
3. Pantoni L, Lamassa M, Inzitari D. Transient global amnesia: a review emphasizing pathogenic aspects. *Acta Neurol Scand* 2000;102:275-283.
4. Matsuda H, Higashi S, Tsuji S, Sumiya H, Miyauchi T, Hisada K, et al. High resolution Tc-99m HMPAO SPECT in a patient with transient global amnesia. *Clin Nucl Med* 1993;18:46-49.
5. Stillhard G, Landis T, Schiess R, Regard M, Sialer G. Bitemporal hypoperfusion in transient global amnesia: 99m-Tc-HM-PAO SPECT and neuropsychological findings during and after an attack. *J Neurol Neurosurg Psychiatry* 1993;53:339-342.
6. Warren JD, Chatterton B, Thompson PD. A SPECT study of the anatomy of transient global amnesia. *J Clin Neurosci* 2000;7:57-59.
7. Jovin TG, Vitti RA, McCluskey LF. Evolution of temporal lobe hypoperfusion in transient global amnesia: a serial single photon emission computed tomography study. *J Neuroimaging* 2000;10:238-241.
8. Strupp M, Bruning R, Wu RH, Deimling M, Reiser M, Brandt T. Diffusion-weighted MRI in transient global amnesia: elevated signal intensity in the left mesial temporal lobe in 7 of 10 patients. *Ann Neurol* 1998;43:164-170.
9. Sedlaczek O, Hirsch JG, Grips E, Peters CN, Gass A, Wöhrle J. Detection of delayed focal MR changes in

- the lateral hippocampus in transient global amnesia. *Neurology* 2004;62:2165-2170.
10. Heiman M. Über Gefäßstudien am aufgehellten Gehirn. I. Die Gefäße des Ammonshornes. *Arch Neurol Neurochir Psychiatr* 1937;40:277-302.
11. Duvernoy HM. *The human hippocampus: an atlas of applied anatomy*. Munich: JF Bergmann, 1988:1-60.
12. Lewis SL. Aetiology of transient global amnesia. *Lancet* 1998;352:397-399.
13. Akkawi NM, Agosti C, Rozzini L, Anzola GP, Padovani A. Transient global amnesia and disturbance of venous flow patterns. *Lancet* 2001;357:957.
14. Maalikjy Akkawi N, Agosti C, Anzola GP, Borroni B, Magoni M, Pezzini A. Transient global amnesia: a clinical and sonographic study. *Eur Neurol* 2003;49:67-71.
15. Pantoni L, Lamassa M, Inzitari D. Transient global amnesia: a review emphasizing pathogenic aspects. *Acta Neurol Scand* 2000;102:275-283.
16. Zorzon M, Antonutti L, Masè G, Biasutti E, Vitrani B, Cazzato G. Transient global amnesia and transient ischemic attack. Natural history, vascular risk factors, and associated conditions. *Stroke* 1995;26:1536-1542.
17. Winbeck K, Etgen T, von Einsiedel HG, Röttinger M, Sander D. DWI in transient global amnesia and TIA: proposal for an ischaemic origin of TGA. *J Neurol Neurosurg Psychiatry* 2005;76:438-441.