

Klebsiella pneumoniae 간농양에 병발한 기종성 전립선염

김지영 · 안계련 · 한상원 · 백혜리 · 이은지 · 이찬복 · 김은석
샘안양병원 내과

Emphysematous prostatitis combined with a liver abscess caused by *Klebsiella pneumoniae*

Emphysematous prostatitis is a rare condition that is characterized by gas and abscess accumulation in the prostate. This uncommon but serious disease requires special attention because of its nonspecific presentation such as dysuria, frequency, urgency, fever, acute urinary retention and/or perineal pain. We report here on a case of emphysematous prostatitis that was combined with a liver abscess caused by *Klebsiella pneumoniae*. A 55-year-old man was admitted due to a 3-day history of urinary retention with a febrile sensation. He had histories of liver cirrhosis and uncontrolled diabetes mellitus. After blood and urine cultures, levofloxacin 500 mg was started intravenously. On the third hospital day, he displayed septic shock. The kidneys-ureters bladder (KUB) X-ray showed pockets of air-accumulation in the lower pelvic cavity, and abdominopelvic computed tomography (CT) with contrast enhancement taken on the third day showed a 5-cm liver abscess with an emphysematous prostate. Intravenous antibiotics was changed to metronidazole 500 mg q.i.d. and cefotaxime 2 g t.i.d. On the sixth day, transurethral resection and drainage were performed under spinal anesthesia. However, the postoperative bleeding continued and hypovolemic shock persisted, which then provoked multiorgan failure. The patient died on the 11th hospital day. *K. pneumoniae* was cultured from the liver abscess aspirate, blood and prostatic tissue, and the bacteria were sensitive to both levofloxacin and cefotaxime. Emphysematous prostatitis is a difficult to diagnose because of its rarity and nonspecific symptoms. A delayed diagnosis can cause high mortality and morbidity, so making a prompt clinical diagnosis of this condition is essential. Appropriate antibiotics with early adequate incision and drainage are also needed.

Key Words: *Klebsiella pneumoniae*, Liver abscess, Prostatitis

Introduction

Emphysematous prostatitis is a rare condition that is characterized by gas and abscess accumulation in the prostate [1-5]. There have been several reports of this uncommon but serious disease. This disease entity requires special attention by physicians due to its nonspecific presentation such as dysuria,

Ji Young Kim, Ke Ryun Ahn, Sang Won Han, Hae Ri Baek, Eun Ji Lee, Chan Bok Lee, and Eun Seok Kim

Department of Internal Medicine, Sam Anyang General Hospital, Anyang, Korea

Copyright © 2011 by The Korean Society of Infectious Diseases | Korean Society for Chemotherapy

Submitted: June 8, 2010

Revised: August 18, 2010

Accepted: September 13, 2010

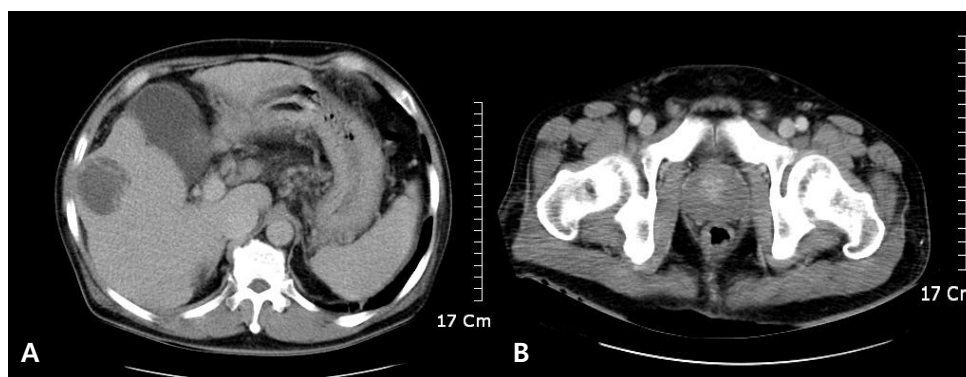
Correspondence to Eun Seok Kim, M.D.

Department of Internal Medicine, Sam Anyang General Hospital 613-8 Anyang 5 dong, Manan-gu, Anyang, Gyeonggi-do, Korea

Tel: +82-31-467-9228, Fax: +82-31-467-9198

E-mail: sstone99@hanmail.net

www.icjournal.org



Figures 1. Initial computed tomography (CT) with contrast enhancement shows one abscess at segment V of the liver and a normal prostate.

frequency, urgency, fever, acute urinary retention and/or perineal pain [1-5]. Some authors have demonstrated that this condition is an uncommon, but relatively serious disease with high mortality and morbidity [1-5]. We report herein on a case of emphysematous prostatitis combined with liver abscess caused by *K. pneumoniae*.

Case report

A 55-year-old man visited the emergency department due to a 3-day history of urinary retention with a febrile sensation.

He had not traveled anywhere for the past 6 months, and he denied alcohol consumption and smoking. He complained of voiding difficulty and vague lower abdominal discomfort.

The day before this presentation, he visited a private clinic and was referred to a general hospital for further evaluation. He underwent an abdominopelvic computed tomography (CT) scan, which revealed a single lesion in the right lobe of the liver and a normal prostate (Fig. 1A and Fig. 1B). The clinician advised this patient to be admitted for further evaluation of the lesion, but he refused. When he visited our ER, his bladder was remarkably distended and urinary catheterization was quickly performed.

He had a 1-year history of chronic hepatitis C with liver cirrhosis (Child-Purr class B) and a 10-year history of uncontrolled diabetes mellitus.

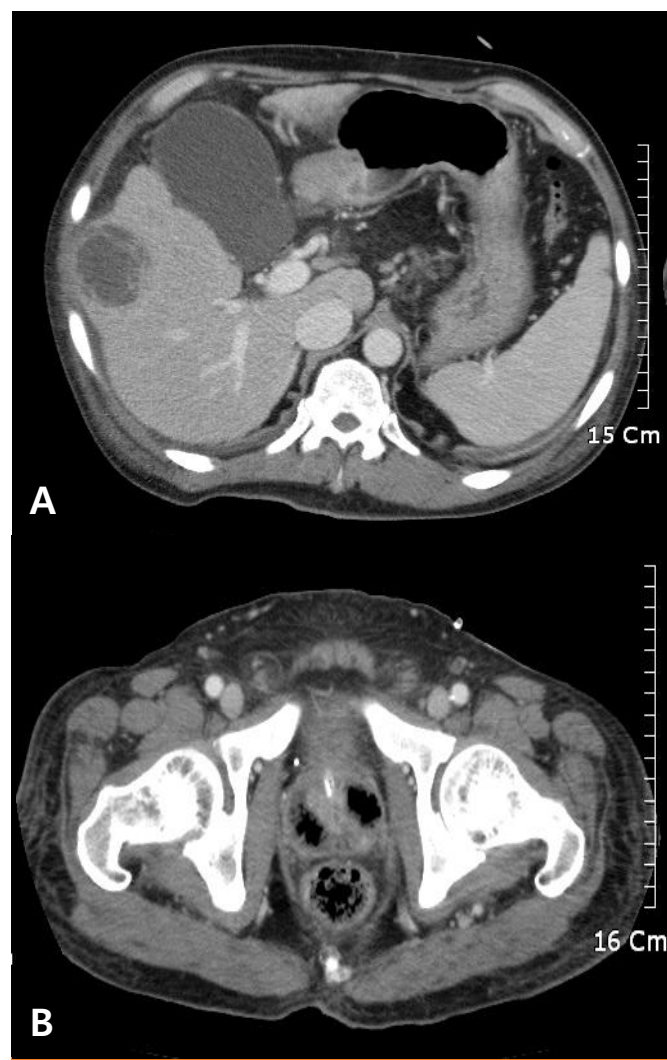
On the physical examination, no specific signs were checked. His blood pressure was 160/90 mmHg, the body temperature was 38.4°C, the pulse rate was 130 per minute and the respiratory rate was 20 per minute. The initial chest radiography and electrocardiography were normal. The laboratory tests showed a WBC: 9,800/mm³, hemoglobin: 11.4 g/dL, platelet: 122,000/mm³, ESR: 61, CRP: 98.1 mg/L, BUN: 23 mg/dL, serum creatinine: 0.8 mg/dL, total protein: 6.6 g/d, serum albumin: 2.3 g/dL, serum AST/ALT: 42/33 IU/L, random blood glucose: 382 mg/dL. The random urine



Figure 2. The kidney-ureters bladder (KUB) X-ray taken after CT scan showed accumulated air pockets (arrow) in the lower pelvic cavity suggesting emphysematous prostatitis. This image was taken on the third hospital day.

pH: 5.0, the specific gravity: 1.025. Urine microscopy exhibited that the RBCs and WBCs were each 0-1/HPF. Blood and urine cultures were performed twice and levofloxacin 500 mg/d was started intravenously.

On the third hospital day, his blood pressure was 80/50 mmHg, the body temperature was 36.8°C, the pulse rate was 128 per minute and the respiratory rate was 22 per minute. The urologist transferred this patient to the infectious disease clinic for the management of septic shock. The kidneys-ureters



Figures 3. The CT scan with dynamic contrast enhancement shows about a 5 cm sized hepatic abscess at segment V of the liver and an emphysematous prostate. This image was taken on the third hospital day.

bladder (KUB) X-ray showed pockets of air-accumulation in the lower pelvic cavity, and the abdominopelvic CT with dynamic contrast enhancement taken on the third day showed a 5-cm liver abscess with an emphysematous prostate (Fig. 2, Fig. 3A and Fig. 3B). Levofloxacin was changed to metronidazole 500 mg q.i.d. and cefotaxime 2 g t.i.d. Ultrasound-guided liver abscess aspiration yielded about 17 mL of yellow material, which was then cultured. We consulted with a urologist about drainage of the emphysematous prostatitis.

On the sixth day, the urologist performed transurethral resection and drainage under spinal anesthesia. Cribriform prostatic tissue, gas and a pus-like discharge mixed with blood were observed by resectoscopy. Some of the infected prostatic tissue was cultured. However, the postoperative bleeding control failed and the patient's hypovolemic shock persisted, which then

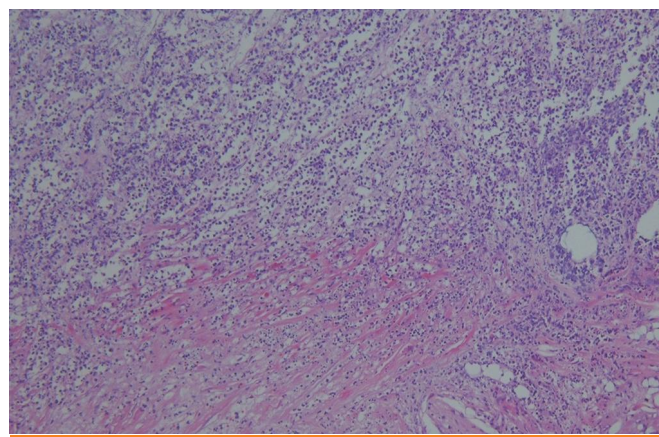


Figure 4. The histopathology shows necrotic change and many neutrophils infiltrating the prostatic tissue (H & E stain, X100).

provoked multiorgan failure. An intravenous inotropic agent and intubation with mechanical ventilation were applied at the intensive care unit. Continuous renal replacement therapy was performed. Despite the efforts, the patient died on the 11th hospital day. *K. pneumoniae* was cultured from the liver abscess aspirate and the two samples of blood and prostatic tissue. Isolated *K. pneumoniae* was sensitive to both levofloxacin and cefotaxime. Histopathologically, necrotic tissue and many inflammatory cells were noticed (Fig. 4).

Discussion

Emphysematous prostatitis is a serious disease, but it is hard to diagnose because of its rarity and nonspecific symptoms [1-5]. A delayed diagnosis can cause high mortality and morbidity, so a prompt clinical diagnosis of this condition is essential [1-5]. The majority of patients present in their fifth or sixth decade of life and they have other predisposing factors including diabetes mellitus, liver cirrhosis, intravesical obstruction and prior genitourinary tract instrumentation and bladder catheterization [1-5]. This disease can be diagnosed at an early stage with advanced diagnostic modalities such as ultrasound, CT or MRI [1-5]. Appropriate antibiotics with early incision and drainage may result in favorable outcomes. In our case, emphysematous prostatitis was present along with a liver abscess due to *K. pneumoniae*.

K. pneumoniae has been reported to be the most common pathogen causing liver abscess in Korea [6, 7]. The incidence of *K. pneumoniae* infection increases in immunocompromised conditions, such as diabetes mellitus, alcoholism, malignancy, hepatobiliary disease, chronic obstructive pulmonary disease, glucocorticoid therapy and renal failure [6-14]. In our case, the

patient had several risk factors for *K. pneumoniae* infections, including diabetes mellitus and liver cirrhosis associated with chronic hepatitis C.

In a few cases, *K. pneumoniae* liver abscess has been associated with metastatic infection at other sites [7, 8, 10-18]. Some investigators have reported that a minority of patients with *Klebsiella* liver abscess, and mostly from Taiwan, develop metastatic infection as manifested by endophthalmitis, uveitis, pneumonia, pulmonary abscess, pulmonary emboli, pulmonary abscess, pleural empyema, peritonitis, subcutaneous abscess, deep neck infection involving the mediastinum, splenic abscess, brain abscess, purulent meningitis, epidural abscess, renal abscess, prostate abscess, osteomyelitis, pyogenic arthritis and psoas abscess [7, 8, 10-18]. This disease entity is called invasive liver abscess syndrome, which is caused by the hypervirulent *K. pneumoniae* subtypes [9, 11-14, 16, 17]. Recent studies have shown that the mucoviscosity-associated gene A (*magA*) and regulator of mucoid phenotype A (*rmpA*) are associated with this syndrome [9, 12-14, 17]. However, we could not ascertain which phenotype and genotype produced invasive *K. pneumoniae* syndrome in our case.

Emphysematous prostatitis is a rare and serious condition [1-5]. There have been some reports about emphysematous prostatitis due to *K. pneumoniae*, but emphysematous prostatitis with invasive liver abscess syndrome has not been previously reported. We present here the first case of emphysematous prostatitis that was combined with liver abscess caused by *K. pneumoniae*.

References

1. Kuo PH, Huang KH, Lee CW, Lee WJ, Chen SJ, Liu KL. Emphysematous prostatitis caused by *K. pneumoniae*. J Formos Med Assoc 2007;106:74-7.
2. Bae GB, Kim SW, Shin BC, Oh JT, Do BH, Park JH, Lee JM, Kim NS. Emphysematous prostatic abscess due to *K. pneumoniae*: report of a case and review of the literature. J Korean Med Sci 2003;18:758-60.
3. Bartkowski DP, Lanesky JR. Emphysematous prostatitis and cystitis secondary to *Candida albicans*. J Urol 1988;139:1063-5.
4. Thorner DA, Sfakianos JP, Cabrera F, Lang EK, Colon I. Emphysematous prostatitis in a diabetic patient. J Urol 2010;183:2025.
5. Sampathkumar K, Murali TR, Sooraj YS, Mahaldar AR. Emphysematous prostatitis in renal transplant. Indian J Urol 2007;23:476-8.
6. Chung DR, Lee SS, Lee HR, Kim HB, Choi HJ, Eom JS, Kim JS, Choi YH, Lee JS, Chung MH, Kim YS, Lee H, Lee MS, Park CK; Korean Study Group for Liver Abscess. Emerging invasive liver abscess caused by K1 serotype *K. pneumoniae* in Korea. J Infect 2007;54:578-83.
7. Ko WC, Paterson DL, Sagnimeni AJ, Hansen DS, Von Gottberg A, Mohapatra S, Casellas JM, Goossens H, Mulazimoglu L, Trenholme G, Klugman KP, McCormack JG, Yu VL. Community-acquired *K. pneumoniae* bacteremia: global differences in clinical patterns. Emerg Infect Dis 2002;8:160-6.
8. Kang CI, Kim SH, Bang JW, Kim HB, Kim NJ, Kim EC, Oh MD, Choe KW. Community-acquired versus nosocomial *K. pneumoniae* bacteremia: clinical features, treatment outcomes, and clinical implication of antimicrobial resistance. J Korean Med Sci 2006;21:816-22.
9. Nadasy KA, Domiati-Saad R, Tribble MA. Invasive *K. pneumoniae* syndrome in North America. Clin Infect Dis 2007;45:e25-8.
10. Cheng DL, Liu YC, Yen MY, Liu CY, Wang RS. Septic metastatic lesions of pyogenic liver abscess. Their association with *K. pneumoniae* bacteremia in diabetic patients. Arch Intern Med 1991;151:1557-9.
11. Tsay RW, Siu LK, Fung CP, Chang FY. Characteristics of bacteremia between community-acquired and nosocomial *K. pneumoniae* infection: risk factor for mortality and the impact of capsular serotypes as a herald for community-acquired infection. Arch Intern Med 2002;162:1021-7.
12. Lee HC, Chuang YC, Yu WL, Lee NY, Chang CM, Ko NY, Wang LR, Ko WC. Clinical implications of hypermucoviscosity phenotype in *K. pneumoniae* isolates: association with invasive syndrome in patients with community-acquired bacteraemia. J Intern Med 2006;259:606-14.
13. Kawai T. Hypermucoviscosity: an extremely sticky phenotype of *K. pneumoniae* associated with emerging destructive tissue abscess syndrome. Clin Infect Dis 2006;42:1359-61.
14. Ma LC, Fang CT, Lee CZ, Shun CT, Wang JT. Genomic heterogeneity in *K. pneumoniae* strains is associated with primary pyogenic liver abscess and metastatic infection. J Infect Dis 2005;192:117-28.
15. Yang CC, Yen CH, Ho MW, Wang JH. Comparison of pyogenic liver abscess caused by non-*K. pneumoniae* and *K. pneumoniae*. J Microbiol Immunol Infect 2004;37:176-84.
16. Fung CP, Chang FY, Lee SC, Hu BS, Kuo BI, Liu CY, Ho M, Siu LK. A global emerging disease of *K. pneumoniae* liver abscess: is serotype K1 an important factor for complicated endophthalmitis? Gut 2002;50:420-4.
17. Fang CT, Chuang YP, Shun CT, Chang SC, Wang JT. A novel virulence gene in *K. pneumoniae* strains causing primary liver abscess and septic metastatic complications. J Exp Med 2004;199:697-705.
18. Lederman ER, Crum NF. Pyogenic liver abscess with a focus on *K. pneumoniae* as a primary pathogen: an emerging disease with unique clinical characteristics. Am J Gastroenterol 2005;100:322-31.