

The Significance of Clinical and Laboratory Features in the Diagnosis of Glycogen Storage Disease Type V: A Case Report

Hyung Jun Park,¹ Ha Young Shin,²
Yu Na Cho,² Seung Min Kim,²
and Young-Chul Choi^{2,3}

¹Department of Neurology, Mokdong Hospital, Ewha Womans University School of Medicine, Seoul;

²Department of Neurology, Yonsei University College of Medicine, Seoul; ³Rehabilitation Institute of Neuromuscular Disease, Yonsei University College of Medicine, Seoul, Korea

Received: 8 October 2013

Accepted: 8 January 2014

Address for Correspondence:

Young-Chul Choi, MD

Department of Neurology, Gangnam Severance Hospital,

Yonsei University College of Medicine, 612 Eonju-ro,

Gangnam-gu, Seoul 135-720, Korea

Tel: +82-2-2019-3323, Fax: +82-2-3462-5904

E-mail: ycchoi@yuhs.ac

Glycogen storage disease type V (GSD-V) is the most common disorder of muscle glycogenosis with characteristic clinical and laboratory findings. A 32-yr-old woman complained of exercise intolerance and myoglobinuria since early adolescence. She reported several episodes of second-wind phenomenon. Physical examination did not show any neurological abnormality, including fixed muscle weakness or atrophy. Serum creatine kinase level was 1,161 IU/L at rest. The result of the non-ischemic forearm exercise test was compatible with GSD-V. Mutation analysis identified the compound heterozygous mutations of the *PYGM*, p.D510fs and p.F710del, which has not yet been reported in Korea. The present case recognizes that detail clinical and laboratory analysis is the first step in the diagnosis of GSD-V.

Keywords: Glycogen Storage Disease Type V; McArdle's Disease; Phosphorylase, Glycogen, Muscle (*PYGM*)

INTRODUCTION

Glycogen storage disease type V (GSD-V), also known as McArdle's disease, is the most common disorder of muscle glycogenosis (1). GSD-V is caused by alterations in the *PYGM* which encodes myophosphorylase. Myophosphorylase catalyzes the phosphorolytic cleavage of glycogen to glucose-1-phosphate in skeletal muscle. Therefore, enzyme deficiency results in the defective breakdown of glycogen into glucose and glycogen accumulation in muscle (2).

GSD-V is inherited in an autosomal recessive pattern, and the prevalence has been estimated at about 1 in 100,000-167,000 (3, 4). Most adult patients present with typical clinical features such as exercise intolerance, episodic myoglobinuria and the second-wind phenomenon. In addition, the resting serum creatine kinase (CK) level, forearm exercise test, and electrophysiological studies can contribute to diagnosis. Subsequent mutation analysis and myophosphorylase activity assay can be used to confirm the diagnosis.

There has only been one case report of Korean patients with GSD-V (5). However, the previous report did not feature typical clinical presentations of GSD-V such as myoglobinuria and the second-wind phenomenon. Here, we report a Korean case of GSD-V with typical clinical and laboratory findings.

CASE DESCRIPTION

A 32-yr-old woman (Fig. 1A, II-3) was referred to our clinic due to easy fatigability, muscle cramps and myoglobinuria in June 2013. Her family history was unremarkable. She recalled easy fatigability, muscle cramps and contractures after intense exercise during physical education classes since early adolescence. In addition, she had several episodes of dark urine following intense exercise such as long-distance running. These symptoms of exercise intolerance had been aggravated one year before. She also reported marked improvement in exercise tolerance after about 20 min, a process termed the 'second-wind phenomenon'; specifically, she had seen improvement in excessive fatigue, breathlessness, and tachycardia. Physical examination did not show fixed muscle weakness and muscle atrophy. All of her sensory modalities and tendon reflexes were intact. Laboratory studies revealed a serum creatine kinase (CK) level of 1,161 IU/L (normal < 215 IU/L) at rest. Nerve conduction study (NCS) and needle electromyography study (EMG) did not show any abnormalities at rest. The non-ischemic forearm exercise test showed no increase in venous lactate level with a normal increase in ammonia (Fig. 2). To confirm easy fatigability and weakness after exercise, we performed motor NCS on the ulnar nerve after voluntary maximal contraction for two minutes and 50 Hz nerve stimulations for one second. However, the ampli-

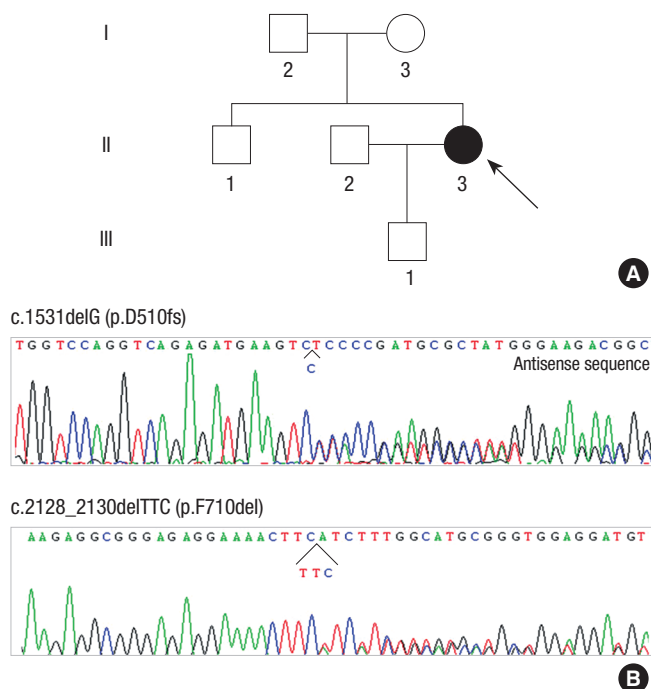


Fig. 1. Pedigree and Sequencing chromatograms in Korean patient with *PYGM* mutations. (A) Pedigree of a family with glycogen storage disease type V (GSD-V). Arrow indicates the proband, whose DNA was used for direct sequencing of *PYGM*. Filled symbol indicate affected member. (B) Sequencing chromatograms of *PYGM* mutations. One allele had a frameshift mutation of c.1531delG (p.D510fs) in exon 13 and the other allele had a deletion mutation of c.2128_2130delTTC (p.F710del) in exon 17.

tudes of the compound muscle action potentials did not decrease after maximal contraction and nerve stimulation. In addition, EMG did not show silent electrical activities during muscle cramps. Based on the clinical and laboratory features, she was diagnosed with glycogenoses with exercise-induced weakness, especially GSD-V. Therefore, we performed *PYGM* genotyping.

Mutational analysis

A DNA sample was extracted from peripheral leukocytes using the Quick Gene blood kit (Fujifilm, Tokyo, Japan). The primer set that covers all 20 exons and their flanking intron regions of the *PYGM* was designed with Primer 3web v.4.0 (<http://primer3.wi.mit.edu/>) using sequences from the Gen Bank accession number NT_167190.1. All the exons of the *PYGM* were sequenced using BigDye Terminator v.3.1 (Applied Biosystems, Foster City, CA, USA) followed by polymerase chain reaction. Electrophoresis and analysis of the reaction mixtures were done with ABI3130xl Genetic Analyzer (Applied Biosystems). A compound heterozygous mutation was identified; one allele had a frameshift mutation of c.1531delG (p.D510fs) in exon 13 and the other allele had a deletion mutation of c.2128_2130delTTC (p.F710del) in exon 17 (Fig. 1B). These mutations have been previously reported to be underlying causes of GSD-V in Japanese patients (6).

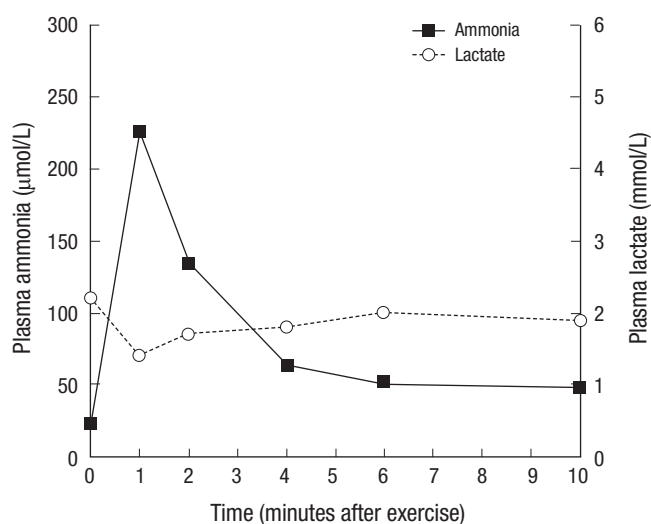


Fig. 2. Non-ischemic forearm exercise test in a patient with GSD-V. The non-ischemic forearm exercise test showed no increase in venous lactate level with a normal increase in ammonia.

DISCUSSION

We described a Korean patient with *PYGM* mutations who had typical clinical and laboratory findings for identification of GSD-V. Even though GSD-V is the most common disorder of muscle glycogenosis, our patient is only the second case of genetically proven GSD-V in Korea.

Four characteristic clinical features are important for initial suspicion of GSD-V. First, exercise intolerance such as easy fatigability, muscle cramps and contractures is triggered by static contractions and dynamic exercise. Almost all patients are admitted to the hospital for exercise intolerance. The pathophysiology of exercise intolerance is not fully understood, but may be associated with impaired glycolysis (2). A deficient glycogen-dependent adenosine triphosphate (ATP) supply might result in down-regulation of Na^+/K^+ pumps in myocytes, leading to loss of membrane excitability (7, 8). The defective breakdown of glycogen into glucose is reproduced by the forearm exercise test. The forearm exercise test showed no increase in lactate level with a normal increase in the ammonia level. The forearm exercise test was originally carried out under ischemic conditions; however, we did not conduct the test under ischemic conditions because the diagnostic value is just as good in non-ischemic conditions and muscle injury can be avoided (9). In addition, several previous studies demonstrated loss of membrane excitability as the amplitude of CMAPs decreased after maximal contracture and high frequency repetitive nerve stimulation, and silent electrical activities during muscle cramping (10, 11). However, we did not identify these findings in the patient presented in this case study. It may be associated with benign clinical symptoms without fixed muscle weakness.

Second, the serum CK level is elevated in almost all patients

with GSD-V even in the absence of exercise. One recent report indicated that hyperCKemia (> 200 IU/L) was present in 99% of patients and the majority (79%) of patients had a level greater than 1,000 IU/L (4). The elevation of serum CK level at rest is likely associated with muscle damage due to impaired glycolysis during exercise. However, the serum CK level at rest did not correlate with clinical severity because exercise-induced muscle damage can stimulate muscle repair and adaptive hypertrophy (12). In addition, one study demonstrated no significant difference in serum CK level at rest between physically active and inactive patients (4).

Third, about half of all patients with GSD-V have experienced one or more episodes of hyperCKemia (several thousand IU/L) or myoglobulinuria after intense exercise. In addition, about 50% of patients with myoglobulinuria develop acute renal failure, which is almost always reversible, but nevertheless requires emergency treatment (13).

Fourth, the second-wind phenomenon, an especially unique feature of GSD-V, differentiates GSD-V from other muscle glycogenoses such as muscle phosphofructokinase deficiency (13). This phenomenon is reported by almost patients during the medical interview. If it is not found in the medical history, it is easily reproduced by diagnostic cycle test (14). Therefore, it is the key finding that leads to initial suspicion of GSD-V. This phenomenon is caused by an increased supply of glucose and free fatty acids after a long period of exercise. These changes lead to a switch in metabolic pathways from endogenous glycogenolysis to oxidative phosphorylation of blood-borne fatty acids (15). However, continuing to exercise also results in severe muscle cramps and myoglobulinuria.

Besides these major clinical features, some patients with GSD-V can also show fixed muscle weakness. Most patients including the patient in this report did not complain of muscle weakness, but approximately one-third of patients develop proximal muscle weakness with aging (2, 16).

Mutation analysis and the myophosphorylase activity assay are used to confirm the diagnosis of GSD-V; however, molecular analysis is more important and more commonly used because muscle biopsy is needed for the enzyme activity assay. At last count in February 2013, 131 different mutations have been reported in the human gene mutation database (<http://www.hgmd.org>). Genotype has not been correlated with the severity of clinical phenotype in previous studies (17, 18). However, there has been a higher incidence of some genotypes in specific ethnic groups; for example, p.R50X and p.G205S in the white population, p.F710del in the Japanese population, and p.W798R in the Spanish population (13). Likewise, two mutations in our patient have previously been reported in Japan, a neighboring country of Korea (6). In particular, the p.F710del mutation has been identified in 73% of Japanese patients (19).

In conclusion, we identified a compound heterozygous mu-

tation of the PYGM in a Korean patient with typical clinical and laboratory findings. We recognize that detailed clinical and laboratory analysis is only the first step in the diagnosis of disease, especially GSD-V.

ORCID

Hyung Jun Park <http://orcid.org/0000-0003-4165-8901>

Ha Young Shin <http://orcid.org/0000-0002-4408-8265>

Yu Na Cho <http://orcid.org/0000-0003-2865-6012>

Seung Min Kim <http://orcid.org/0000-0002-4384-9640>

Young-Chul Choi <http://orcid.org/0000-0001-5525-6861>

REFERENCES

1. Vieitez I, Teijeira S, Fernandez JM, San Millan B, Miranda S, Ortolano S, Louis S, Laforet P, Navarro C. *Molecular and clinical study of McArdle's disease in a cohort of 123 European patients: identification of 20 novel mutations.* *Neuromuscul Disord* 2011; 21: 817-23.
2. Dimauro S, Andreu AL, Bruno C, Hadjigeorgiou GM. *Myophosphorylase deficiency (glycogenosis type V; McArdle disease).* *Curr Mol Med* 2002; 2: 189-96.
3. Haller RG. *Treatment of McArdle disease.* *Arch Neurol* 2000; 57: 923-4.
4. Lucia A, Ruiz JR, Santalla A, Nogales-Gadea G, Rubio JC, García-Consuegra I, Cabello A, Pérez M, Teijeira S, Viteitez I, et al. *Genotypic and phenotypic features of McArdle disease: insights from the Spanish national registry.* *J Neurol Neurosurg Psychiatry* 2012; 83: 322-8.
5. Sohn EH, Kim HS, Lee AY, Fukuda T, Sugie H, Kim DS. *A novel PYGM mutation in a Korean patient with McArdle disease: the role of nonsense-mediated mRNA decay.* *Neuromuscul Disord* 2008; 18: 886-9.
6. Tsujino S, Shanske S, Goto Y, Nonaka I, DiMauro S. *Two mutations, one novel and one frequently observed, in Japanese patients with McArdle's disease.* *Hum Mol Genet* 1994; 3: 1005-6.
7. Haller RG, Clausen T, Vissing J. *Reduced levels of skeletal muscle Na⁺K⁺-ATPase in McArdle disease.* *Neurology* 1998; 50: 37-40.
8. Clausen T, Nielsen OB. *The Na⁺,K⁺-pump and muscle contractility.* *Acta Physiol Scand* 1994; 152: 365-73.
9. Kazemi-Esfarjani P, Skomorowska E, Jensen TD, Haller RG, Vissing J. *A nonischemic forearm exercise test for McArdle disease.* *Ann Neurol* 2002; 52: 153-9.
10. Dyken ML, Smith DM, Peake RL. *An electromyographic diagnostic screening test in McArdle's disease and a case report.* *Neurology* 1967; 17: 45-50.
11. Lorenzoni PJ, Lange MC, Kay CS, Scola RH, Werneck LC. *Motor nerve conduction study in McArdle disease: case report.* *Arq Neuropsiquiatr* 2005; 63: 874-7.
12. Clarkson PM, Hubal MJ. *Exercise-induced muscle damage in humans.* *Am J Phys Med Rehabil* 2002; 81: S52-69.
13. Lucia A, Nogales-Gadea G, Pérez M, Martín MA, Andreu AL, Arenas J. *McArdle disease: what do neurologists need to know?* *Nat Clin Pract Neurol* 2008; 4: 568-77.
14. Vissing J, Haller RG. *A diagnostic cycle test for McArdle's disease.* *Ann Neurol* 2003; 54: 539-42.
15. Haller RG, Vissing J. *Spontaneous "second wind" and glucose-induced*

- second "second wind" in McArdle disease: oxidative mechanisms. *Arch Neurol* 2002; 59: 1395-402.
16. Wolfe GI, Baker NS, Haller RG, Burns DK, Barohn RJ. *McArdle's disease presenting with asymmetric, late-onset arm weakness. Muscle Nerve* 2000; 23: 641-5.
17. Bruno C, Cassandrini D, Martinuzzi A, Toscano A, Moggio M, Morandi L, Servidei S, Mongini T, Angelini C, Musumeci O, et al. *McArdle disease: the mutation spectrum of PYGM in a large Italian cohort. Hum Mutat* 2006; 27: 718.
18. Martín MA, Rubio JC, Buchbinder J, Fernández-Hojas R, del Hoyo P, Teijeira S, Gámez J, Navarro C, Fernández JM, Cabello A, et al. *Molecular heterogeneity of myophosphorylase deficiency (McArdle's disease): a genotype-phenotype correlation study. Ann Neurol* 2001; 50: 574-81.
19. Sugie H, Sugie Y, Ito M, Fukuda T, Nonaka I, Igarashi Y. *Genetic analysis of Japanese patients with myophosphorylase deficiency (McArdle's disease): single-codon deletion in exon 17 is the predominant mutation. Clin Chim Acta* 1995; 236: 81-6.