

Erratum

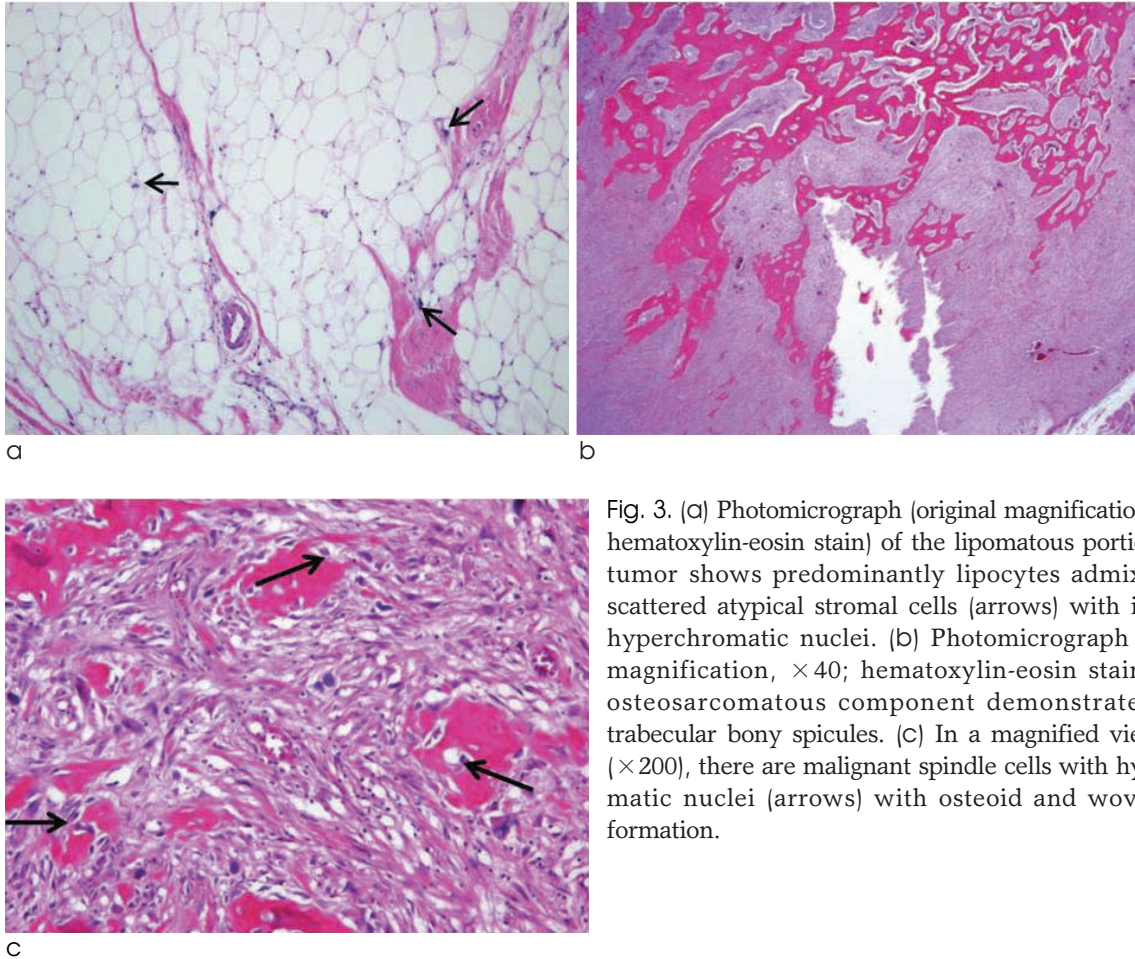


Fig. 3. (a) Photomicrograph (original magnification, $\times 100$; hematoxylin-eosin stain) of the lipomatous portion of the tumor shows predominantly lipocytes admixed with scattered atypical stromal cells (arrows) with irregular, hyperchromatic nuclei. (b) Photomicrograph (original magnification, $\times 40$; hematoxylin-eosin stain) of the osteosarcomatous component demonstrates dense trabecular bony spicules. (c) In a magnified view of (b) ($\times 200$), there are malignant spindle cells with hyperchromatic nuclei (arrows) with osteoid and woven bone formation.

대한자기공명영상학회지 제15권 제3호(JKSMRM 15:251-256)의 254page Fig. 3C의 사진을 바로 잡습니다.