

Epidemiology of Depressive Disorder

Maeng Je Cho, M.D · Jun Young Lee, M. D.

Seoul National University College of Medicine & Hospital

Abstract

10 1

가 가 .

가

, , 가

10 ~ 15%가
(1)(1, 2).

30% 가

(3).

•	•	•	•	•
•	•	•	•	•

1. 가	(2001 , WHO)
Diseases	% of Total
Lower respiratory infections	6.4
Perinatal conditions	6.2
HIV / AIDS	6.1
Unipolar depressive disorders	4.4
Diarrheal diseases	4.2
Ischemic heart disease	3.8
Cerebrovascular disease	3.1
Road traffic accidents	2.8
Malaria	2.7
Tuberculosis	2.4

Schedule(DIS), Composite International Diagnostic
interview(CIDI)

DIS CIDI
1981 1991

Epidemiologic Catchment Area study (ECA)

National Comorbidity Survey(NCS)가

1984 2001

(6~9).

DSM - IV

2 , ,

2 가, ,

1980 , 가 ,

5

. 1978

(World Health Organization, WHO)

9 (International Classification of

Diseases, ninth revision: ICD - 9)

(4), 1980

(American Psychiatric Association, APA)

(10).

3 (Diagnostic and

Statistical Manual of mental disorders third edition :

DSM - III) (5),

2

10%

Present State Examina-

5% (7~9, 11~17).

NCS

tion(PSE), Schedules for Clinical Assessment in

17.1%, 1.1%

Neuropsychiatry(SCAN), Diagnostic Interview

가 .

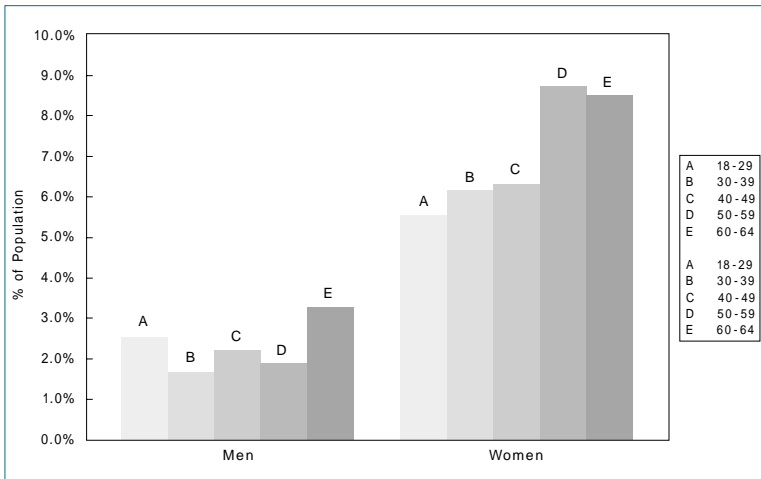
MD : Major depressive disorder, DD : Dysthymic disorder, No : Case number, Dx : Diagnosis criteria

774

3.

Risk factor	Major depressive disorder
Sex	Women
Age	Younger cohort
Socioeconomic status	Lower Socioeconomic status (?)
Marital status	Separated and divorced
Family history	Persons with family history
Childhood experience	Early parental death and disruptive childhood environment
Stress	Negative stressful events and chronic stress
A confidant	Absence of confidant in women
Residence	Urban areas

Adapted from Comprehensive textbook of psychiatry. 7th edition



1.

가
(1).
50 가
가
가
Klerman Weissman 2

가 가
가
(22). 9
39,000
Cross national collaborative study
가 (23).
가 (2)(9).

가

가, 가 ,

(21). 2

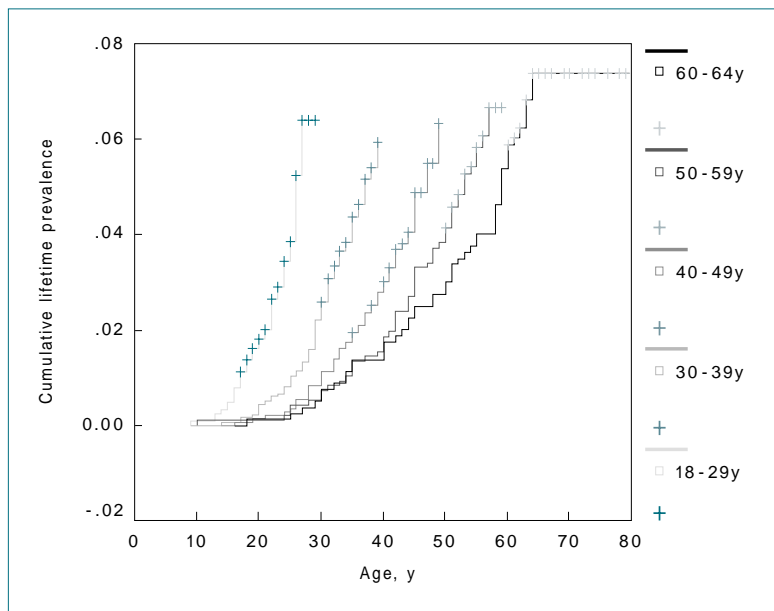
가

(19).

3.

2.

, 가
ECA 45 가 (24).
NCS 가
가 50 (24, 25).



2.

가 (27).
6. , 가
Weis-
mann
DSM -
III 10
(28),
100 1.5
,
가 100 19
.

가
(9).

(29), Hwu 가

4.

,
2~3 . (27).

가

(26). 가

5.

, , ,
가 , , ,

가 2 (27). ,

가 .

Hwu

가

20

30

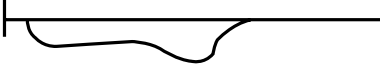
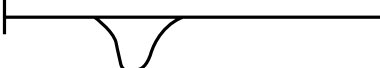



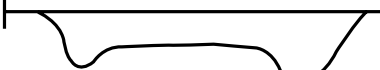
가

가

가

(28).

6~9

		%
Single episode with antecedent dysthymia		9
Single episode without antecedent dysthymia		22
Recurrent, with antecedent dysthymia, with full interepisode recovery		4
Recurrent, with antecedent dysthymia, without full interepisode recovery		26
Recurrent, without antecedent dysthymia, with full interepisode recovery		20
Recurrent, without antecedent dysthymia, without full interepisode recovery		19

3.

50% 6 , 70% 가
1 (30). (34).
. 15 , 65%
15% (35).
85% (31). 10~15%
4 가 41 (2, 34, 36).
, WHO
, 4 가
가 (32). 2020 2 가
4가 (1).
3 .
가
가 (33).
, ,
가 . 17%가 (37). 70%
, 80%

(38). 60% 가 .
가 20% (16). 가
가 10 .
(39). 가 5 3 가 .
(40). , , 가 가
, 가 (41, 42). . 가 가
가 가 16~21% 3
(43). 가 (51).
50%, 0.34~0.67 ,
22~40%, 10~32%, 13~25%, 0.14~0.43 2
23%, 17%, 11% .
(44). , 40%가
, , 60%
, (51).
, 2 가
(45). (52~54). 가
가 . 6
(46). , , Human Leukocyte Antigen(HLA) ,
, , , 가 9 q arm orosomucoid(ORM) , GABA A
(46). receptor alpha 5 subunit(GABRA5) ,
. 2 2q33~34 CREB(cAMP - responsive
8~75% , element - binding protein)1 gene
(55~58). Caspi
8 (47). , 17 q arm serotonin
, , , transporter(5 - HTT) short
가 (48~50). allele 가 long allele 가

[illegible]

1. World Health Organization. Burden of mental and behavioral disorders, in World Health Report. Geneva : World Health

2. Guze SB, Robins E. Suicide and primary affective disorders. *Br J Psychiatry* 1970 ; 117(539) : 437 - 8
3. McQuaid JR, Stein MB, Laffaye C, McCahill ME. Depression in a primary care clinic : the prevalence and impact of an unrecognized disorder. *J Affect Disord* 1999 ; 55(1) : 1 - 10
4. World Health Organization. Mental disorders : glossary and guide to their classification in accordance with the 9th revision of the International Classification of Diseases. Geneva : WHO, 1978
5. American Psychiatric Association. Diagnostic and Statistical Manual of mental disorders, 3rd ed. Washington DC : American Psychiatric Association Press, 1980
6. Kessler RC, McGonagle KA, Zhao S, Nelson CB, Hughes M, Kendler KS, et al. Lifetime and 12 - month prevalence of DSM - III - R psychiatric disorders in the United States. Results from the National Comorbidity Survey. *Arch Gen Psychiatry* 1994 ; 51(1) : 8 - 19
7. Weissman MM, Leaf PJ, Tischler GL, Blazer DG, Karno M, Florio LP, et al. Affective disorders in five United States communities. *Psychol Med* 1988 ; 18(1) : 141 - 53
8. Lee CK, Kwak YS, Yamamoto J, Rhee H, Kim YS, Lee YH, et al. Psychiatric epidemiology in Korea. Part II : Urban and rural differences. *J Nerv Ment Dis* 1990 ; 178(4) : 247 - 52
9. Cho MJ. Development of the Korean version of diagnostic instruments and epidemiological studies for major psychiatric disorders. Seoul : Ministry of Health & Welfare, 2001
10. American Psychiatric Association. Diagnostic and Statistical Manual of mental disorders, 4th ed. Washington DC : American Psychiatric Association Press, 1994
11. Bland RC, Orn H, Newman SC. Lifetime prevalence of psychiatric disorders in Edmonton. *Acta Psychiatr Scand Suppl* 1988 ; 338 : 24 - 32

779

- the distribution of depressive symptoms in later life : a survey using Draft ICD - 10 and DSM - III - R. *Psychol Med* 1993 ; 23(3) : 719 - 29
13. Hodiament P, Peer N, Syben N. Epidemiological aspects of psychiatric disorder in a Dutch health area. *Psychol Med* 1987 ; 17(2) : 495 - 505
14. Hwu HG, Yeh EK, Chang LY. Prevalence of psychiatric disorders in Taiwan defined by the Chinese Diagnostic Interview Schedule. *Acta Psychiatr Scand* 1989 ; 79(2) : 136 - 47
15. Joyce PR, Oakley - Browne MA, Wells JE, Bushnell JA, Hornblow AR. Birth cohort trends in major depression : increasing rates and earlier onset in New Zealand. *J Affect Disord* 1990 ; 18(2) : 83 - 9
16. Kessler RC, Berglund P, Demler O, Jin R, Koretz D, Wang PS, et al. The epidemiology of major depressive disorder : results from the National Comorbidity Survey Replication (NCS - R). *JAMA* 2003 ; 289(23) : 3095 - 105
17. Vazquez - Barquero JL, Diez - Manrique JF, Pena C, Quintanal RG, Labrador Lopez M. Two stage design in a community survey. *Br J Psychiatry* 1986 ; 149 : 88 - 97
18. Cassem EH. Depressive disorders in the medically ill. An overview. *Psychosomatics* 1995 ; 36(2) : S2 - 10
19. Eaton WW, Kramer M, Anthony JC, Dryman A, Shapiro S, Locke BZ. The incidence of specific DIS/DSM - III mental disorders : data from the NIMH Epidemiologic Catchment Area Program. *Acta Psychiatr Scand* 1989 ; 79(2) : 163 - 78
20. Kelsoe J. Mood disorders : Epidemiology, in *Comprehensive textbook of psychiatry*, B. Sadock and V. Sadock, Editors. Philadelphia : Lippincott Williams & Wilkins, 2000 : 1298 - 307
21. Kendler KS, Kessler RC, Walters EE, MacLean C, Neale MC, Eaves LJ, et al. Stressful life events, genetic liability, and onset of an episode of major depression in women. *Am J Psychiatry* 1995 ; 152(6) : 833 - 42
22. Klerman GL, Weissman MM. Increasing rates of depression. *JAMA* 1989 ; 261(15) : 2229 - 35
23. The changing rate of major depression. Cross - national comparisons. Cross - National Collaborative Group. *JAMA* 1992 ; 268(21) : 3098 - 105
24. Kessler RC, Zhao S, Blazer DG, Swartz M. Prevalence, correlates, and course of minor depression and major depression in the National Comorbidity Survey. *J Affect Disord* 1997 ; 45(1 - 2) : 19 - 30
25. Weissman MM, Myers JK. Affective disorders in a US urban community : the use of research diagnostic criteria in an epidemiological survey. *Arch Gen Psychiatry* 1978 ; 35(11) : 1304 - 11
26. Bothwell S, Weissman MM. Social impairments four years after an acute depressive episode. *Am J Orthopsychiatry* 1977 ; 47(2) : 231 - 7
27. Hwu HG, Chang IH, Yeh EK, Chang CJ, and Yeh LL. Major depressive disorder in Taiwan defined by the Chinese diagnostic Interview Schedule. *J Nerv Ment Dis* 1996 ; 184(8) : 497 - 502
28. Weissman MM, Bland RC, Canino GJ, Faravelli C, Greenwald S, Yeh EK, et al. Cross - national epidemiology of major depression and bipolar disorder. *JAMA* 1996 ; 276(4) : 293 - 9
29. Kleinman A. Neurasthenia and depression : a study of somatization and culture in China. *Cult Med Psychiatry* 1982 ; 6(2) : 117 - 90
30. Keller MB, Lavori PW, Mueller TI, Endicott J, Coryell W, Shea T, et al. Time to recovery, chronicity, and levels of psychopathology in major depression. A 5 - year prospective follow - up of 431 subjects. *Arch Gen Psychiatry* 1992 ; 49(10) : 809 - 16
31. Mueller TI, Leon AC, Keller MB, Solomon DA, Endicott J, Maser JD, et al. Recurrence after recovery from major depressive disorder during 15 years of observational follow - up. *Am J Psychiatry* 1999 ; 156(7) : 1000 - 6
32. Mueller TI, Keller MB, Leon AC, Solomon DA, Shea MT, Endicott J, et al. Recovery after 5 years of unremitting major depressive disorder. *Arch Gen Psychiatry* 1996 ; 53(9) : 794 - 9
33. Keller MB, Klein DN, Hirschfeld RM, Kocsis JH, McCullough

- JP, Mavin DB, et al. Results of the DSM - IV mood disorders field trial. *Am J Psychiatry* 1995 ; 152(6) : 843 - 9
34. Mueller TI, Leon AC. Recovery, chronicity, and levels of psychopathology in major depression. *Psychiatr Clin North Am* 1996 ; 19(1) : 85 - 102
35. Fava M, Davidson KG. Definition and epidemiology of treatment - resistant depression. *Psychiatr Clin North Am* 1996 ; 19(2) : 179 - 200
36. Petronis KR, Samuels JF, Moscicki EK, Anthony JC. An epidemiologic investigation of potential risk factors for suicide attempts. *Soc Psychiatry Psychiatr Epidemiol* 1990 ; 25(4) : 193 - 9
37. Kessler RC, Nelson CB, McGonagle KA, Liu J, Swartz M, Blazer DG. Comorbidity of DSM - III - R major depressive disorder in the general population : results from the US National Comorbidity Survey. *Br J Psychiatry* 1996 ; 30(Suppl) : 17 - 30
38. Moos RH, Mertens JR. Patterns of diagnoses, comorbidities, and treatment in late - middle - aged and older affective disorder patients : comparison of mental health and medical sectors. *J Am Geriatr Soc* 1996 ; 44(6) : 682 - 8
39. Wittchen HU, Zhao S, Kessler RC, Eaton WW. DSM - III - R generalized anxiety disorder in the National Comorbidity Survey. *Arch Gen Psychiatry* 1994 ; 51(5) : 355 - 64
40. Horwath E, Johnson J, Weissman MM, Hornig CD. The validity of major depression with atypical features based on a community study. *J Affect Disord* 1992 ; 26(2) : 117 - 25
41. Martin CS, Arria AM, Mezzich AC, Bukstein OG. Patterns of polydrug use in adolescent alcohol abusers. *Am J Drug Alcohol Abuse* 1993 ; 19(4) : 511 - 21
42. Conte HR, Karasu TB. A review of treatment studies of minor depression : 1980 - 1991. *Am J Psychother* 1992 ; 46(1) : 58 - 74
43. Roy - Byrne PP, Stang P, Wittchen HU, Ustun B, Walters EE, Kessler RC. Lifetime panic - depression comorbidity in the National Comorbidity Survey. Association with symptoms, impairment, course and help - seeking. *Br J Psychiatry* 2000 ; 176 : 229 - 35
44. McDaniel JS, Musselman DL, Porter MR, Reed DA, Nemeroff CB. Depression in patients with cancer. Diagnosis, biology, and treatment. *Arch Gen Psychiatry* 1995 ; 52(2) : 89 - 99
45. Barefoot JC, Schroll M. Symptoms of depression, acute myocardial infarction, and total mortality in a community sample. *Circulation* 1996 ; 93(11) : 1976 - 80
46. Franco - Bronson K. The management of treatment - resistant depression in the medically ill. *Psychiatr Clin North Am* 1996 ; 19(2) : 329 - 50
47. Morris PL, Robinson RG, Samuels J. Depression, introversion and mortality following stroke. *Aust N Z J Psychiatry* 1993 ; 27(3) : 443 - 9
48. Scott TF, Allen D, Price TR, McConnell H, Lang D. Characterization of major depression symptoms in multiple sclerosis patients. *J Neuropsychiatry Clin Neurosci* 1996 ; 8(3) : 318 - 23
49. Kishi Y, Robinson RG, Forrester AW. Prospective longitudinal study of depression following spinal cord injury. *J Neuropsychiatry Clin Neurosci* 1994 ; 6(3) : 237 - 44
50. Blumer D, Montouris G, Hermann B. Psychiatric morbidity in seizure patients on a neurodiagnostic monitoring unit. *J Neuropsychiatry Clin Neurosci* 1995 ; 7(4) : 445 - 56
51. Sullivan PF, Neale MC, Kendler KS. Genetic epidemiology of major depression : review and meta - analysis. *Am J Psychiatry* 2000 ; 157(10) : 1552 - 62
52. von Knorring AL, Bohman M, Sigvardsson S. Early life experiences and psychiatric disorders : an adoptee study. *Acta Psychiatr Scand* 1982 ; 65(4) : 283 - 91
53. Cadoret RJ, O'Gorman TW, Heywood E, Troughton E. Genetic and environmental factors in major depression. *J Affect Disord* 1985 ; 9(2) : 155 - 64
54. Wender PH, Kety SS, Rosenthal D, Schulsinger F, Ortmann J, Lunde I. Psychiatric disorders in the biological and adoptive families of adopted individuals with affective disorders. *Arch*

Gen Psychiatry 1986 ; 43(10) : 923 - 9

55. Stancer HC, Weitkamp LR, Persad E, Flood C, Jorna T, Yagnow RL, et al. Confirmation of the relationship of HLA (chromosome 6) genes to depression and manic depression. II. The Ontario follow - up and analysis of 117 kindreds. Ann Hum Genet 1988 ; 52(Pt 4) : 279 - 98
56. Wilson AF, Tanna VL, Winokur G, Elston RC, Hill EM. Linkage analysis of depression spectrum disease. Biol Psychiatry 1989 ; 26(2) : 163 - 75
57. Oruc L, Verheyen GR, Furac I, Ivezic S, Jakovljevic M, Van Broockhoven C, et al. Positive association between the

GABRA5 gene and unipolar recurrent major depression. Neuropsychobiology 1997 ; 36(2) : 62 - 4

58. Zubenko GS, Hughes HB, 3rd, Maher BS, Stiffler JS, Zubenko WN, Marazita ML. Genetic linkage of region containing the CREB1 gene to depressive disorders in women from families with recurrent, early - onset, major depression. Am J Med Genet 2002 ; 114(8) : 980 - 7
59. Caspi A, Sugden K, Moffitt TE, Taylor A, Craig IW, Poulton R, et al. Influence of life stress on depression : moderation by a polymorphism in the 5 - HTT gene. Science 2003 ; 301(5631) : 386 - 9